

# **PARTS REFERENCE LIST**

for

**Model VX780**

Ref. No.	Parts No.	Parts Name	Ref. No.	Parts No.	Parts Name
1	130941001	Face plate	26	128437000	Presser bar
2	131240001	Ringe plate	27	125165003	Presser foot lifter
3	120094001	Face plate hinge	28	121950001	Stud screw
4	117838001	Washer	29	121197001	Tension releaser spring bracket
5	009671012	Screw	30	131337001	Screw
6	001660413	Screw	31	121196001	Spring
7	025660236	Washer	32	135832001	Tension releaser, A
8	123023000	Washer	33	129984001	Thumb screw
9	131238001	Magnet holder, A	34	125465001	Presser foot assembly
10	123738000	Magnet	35	002681012	Screw
11	131239001	Magnet holder, B	36	048050342	Stop ring
12	130846001	Reflection plate	37	129560001	Needle bar supporter stud
13	132055001	Sew-light assembly	38	128599001	Needle bar supporter
14	110215002	Screw	39	125429001	Needle bar
15	124699001	Needle position notched spring	40	123185001	Screw
16	101026001	Steel ball	41	120110001	Spring
17	123702001	Needle position stopper	42	100139001	Screw
18	002670412	Screw	43	128391001	Needle bar thread guide
19	123707004	Needle position knob	44	129627001	Needle clamp
20	124319000	Washer	45	100028014	Needle # 14
21	002680712	Screw	46	130967001	Needle plate assembly
22	205336000	Sew-light bulb	47	130936001	Needle plate
23	125162001	Presser bar spring	48	116587001	Needle plate spring, R
24	102445000	Presser bar guide bracket	49	116588001	Needle plate spring, L
25	100058003	Screw	50	125139001	Screw

Ref. No.	Parts No.	Parts Name	Ref. No.	Parts No.	Parts Name
51	121980001	Needle clamp screw	76	123589001	Zigzag width control plate
52	124610003	Upper plate	77	131251001	Zigzag adjusting lever
53	009671014	Screw	78	131241001	Belt cover supporter
54	130851001	Accessory table assembly	79	002680712	Screw
55	130853001	Accessory table body	80	048040342	Stop ring
56	130856001	Accessory table cover	81	025060132	Washer
57	105433001	Eccentric stud	82	002680712	Screw
58	002670612	Screw	83	131141001	BH Feed cam
59	128412001	Cord guide plate	84	009670812	Screw
60	123597001	Zigzag connecting rod assembly	85	128573001	Screw
61	124503002	Spring	86	123613001	BH Feed cam O
62	048030342	Stop ring	87	131142001	BH Feed cam B
63	123600000	Roller	88	128517000	BH Feed cam F
64	132054001	Frame assembly	89	048060342	Stop ring
65	129669001	Control frame body	90	128579001	BH Feed control cam
66	048040342	Stop ring	91	048030342	Stop ring
67	123584001	Dial stopper	92	123608001	Feed control cam rod
68	123586001	Spring washer	93	048030342	Stop ring
69	131253001	Stitch regulating dial shaft	94	131471001	Feed adjusting arm
70	128534001	Zigzag link assembly	95	002670712	Screw
71	025630132	Washer	96	123615000	Pattern cam shaft
72	009630813	Screw	97	131043000	Pattern cam assembly
73	009660613	Screw	98	123616001	Washer
74	124303001	Washer	99	124537001	Washer
75	025660132	Washer	100	048060342	Stop ring

Ref. No.	Parts No.	Parts Name	Ref. No.	Parts No.	Parts Name
101	002671012	Screw	126	408883002	Screw
102	025350132	Washer	127	130861001	Carrying handle
103	125586001	Spring	128	101552004	Screw
104	131186001	Finger shaft assembly	129	121846001	Bobbin presser
105	123637001	Finger shaft	130	188058001	Spool pin
106	048030342	Stop ring	131	188059001	Spool pin stand
107	139474001	Finger frame shaft	132	130940002	Top cover
108	009630813	Screw	133	125928000	Spring
109	021630103	Nut	134	130888001	Bobbin winder assembly
110	048050342	Stop ring	135	120448001	Bobbin winder rubber ring
111	048030342	Stop ring	136	120263001	Stud screw
112	128521001	Finger frame	137	123661001	Spring
113	123631001	Finger assembly	138	121857001	Nut
114	123634001	Release lever	139	021680202	Nut
115	123624001	Z Finger frame	140	130890001	Bobbin winder supporting plate
116	048050342	Stop ring	141	002670512	Screw
117	123628001	Z Finger frame shaft	142	131236001	Top cover stud R
118	123625001	Z Finger assembly	143	189908001	Stop ring
119	129646001	Z Adjusting arm	144	188060001	Spring
120	025350332	Washer	145	130862001	Top cover bracket
121	125176001	Screw	146	002681012	Screw
122	103978002	Screw	147	131237001	Top cover stud L
123	021660102	Nut	148	121857001	Nut
124	009670714	Screw	149	131235001	Pin
125	130894001	Thread guide assembly	150	131321000	Tube

Ref. No.	Parts No.	Parts Name	Ref. No.	Parts No.	Parts Name
151	002670612	Screw	176	130870001	Forked connecting rod
152	131243001	Feed regulating lever assembly	177	100066001	Slide block
153	131244001	Feed regulating lever	178	100067001	Slide block stud
154	048040342	Stop ring	179	048040342	Stop ring
155	128415001	Spring	180	002680712	Screw
156	131247001	Feed regulating lever arm	181	129991001	Stud
157	131449001	Feed regulating lever A assembly	182	048050342	Stop ring
158	047201042	Spring pin	183	123669001	Spring
159	131249001	Feed regulating lever B	184	123660001	Stud
160	130942003	Feed regulating lever knob	185	048040342	Stop ring
161	122771001	Screw	186	135877001	Release lever
162	139626001	Screw	187	102571003	Nut
163	025680232	Washer	188	025680232	Washer
164	118519001	Washer	189	128507001	Collar
165	128461001	Crank rod assembly	190	128506001	Spring
166	128462001	Crank rod	191	113431002	Washer
167	002681212	Screw	192	131402000	Feed regulating bar assembly
168	129991001	Stud	193	128452001	Pin
169	048050342	Stop ring	194	103813001	Washer
170	123548001	Feed regulator adjusting plate	195	048030342	Stop ring
171	002681212	Screw	196	021670102	Nut
172	103978002	Screw	197	120258001	Screw
173	021660102	Nut	198	102571003	Nut
174	123547000	Feed regulator stud	199	123645001	Adjusting screw
175	125719000	Feed regulator	200	129569001	Stud screw

Ref. No.	Parts No.	Parts Name	Ref. No.	Parts No.	Parts Name
201	123643001	Feed regulation lever	226	129559001	Screw
202	123646001	Spring	227	124614000	Eccentric counter weight
203	123641001	Z Selecting lever assembly	228	101706003	Screw
204	132878001	Feed selecting cam	229	100251001	Screw
205	132878001	Z Selecting cam	230	129561001	Thread take-up lever assembly
206	009670512	Screw	231	151604001	Screw
207	101552004	Screw	232	120582001	Needle bar crank
208	025350134	Washer	233	129919001	Needle bar crank rod assembly
209	130847003	Belt cover	234	129920000	Needle bar crank rod
210	100043003	Stop motion knob screw	235	120108001	Needle bar clamp stud
211	132170008	Stop motion knob	236	120109001	Needle bar clamp
212	100041002	Stop motion washer	237	120106001	Felt
213	130864004	Balance wheel	238	120107001	Spring
214	122422000	Balance wheel bushing	239	132051002	Screw
215	131189000	Upper shaft bushing, R	240	100507000	Metal plate
216	124616000	Washer	241	100366002	Screw
217	151605001	Screw	242	120653001	Cord bush
218	130081000	Feed cam	243	131327001	Thread guard B assembly
219	128433000	Upper shaft	244	130857001	Accessory table holder
220	129748000	Worm	245	131337001	Screw
221	151602001	Screw	246	125270001	Tension disc
222	132951000	Collar	247	125269001	Tension disc
223	101706003	Screw	248	125302001	Tension releaser, B
224	131188000	Upper shaft bushing, L	249	125275001	Spring
225	129558001	Screw	250	129993001	Tension spring

Ref. No.	Parts No.	Parts Name	Ref. No.	Parts No.	Parts Name
251	125272009	Tension control knob assembly	276	139100001	Bevel gear cover
252	125273009	Tension control knob	277	135738002	Arm decoration plate
253	125274000	Tension control ring	278	132216001	Adjusting knob
254	021680202	Nut	279	130971000	Washer
255	110735001	Washer	280	025350132	Washer
256	120329001	Tension control knob stopper	281	002660802	Screw
257	131326001	Thread guard A	282	047251242	Spring pin
258	120336001	Thread take-up spring cover	283	135361001	Pattern selecting dial shaft
259	120337001	Thread take-up spring	284	048050342	Stop ring
260	120436002	Thread take-up spring case, B	285	132868002	Pattern selecting dial
261	120435002	Thread take-up spring case, A	286	025350332	Washer
262	120265001	Spring washer	287	002670812	Screw
263	129581001	Stud screw	288	132864000	Gear box for pattern selecting dial
264	120339001	Thread guide	289	025350332	Washer
265	120340001	Thread guide	290	002670612	Screw
266	131337001	Screw	291	100242003	Screw
267	002670512	Screw	292	120438001	Pin
268	125096001	Washer	293	128416001	Ringe plate
269	188440001	Washer	294	130848001	Hinged door
270	131481001	Spring	295	130157001	Rubber cushion
271	128491001	Washer	296	123768001	Hinged door spring
272	123513000	Spring pin	297	132865000	Drive gear
273	130858000	Pin	298	000670403	Screw
274	129180001	Spring pin	299	116577001	Cover
275	002670612	Screw	300	130850001	Base plate foot

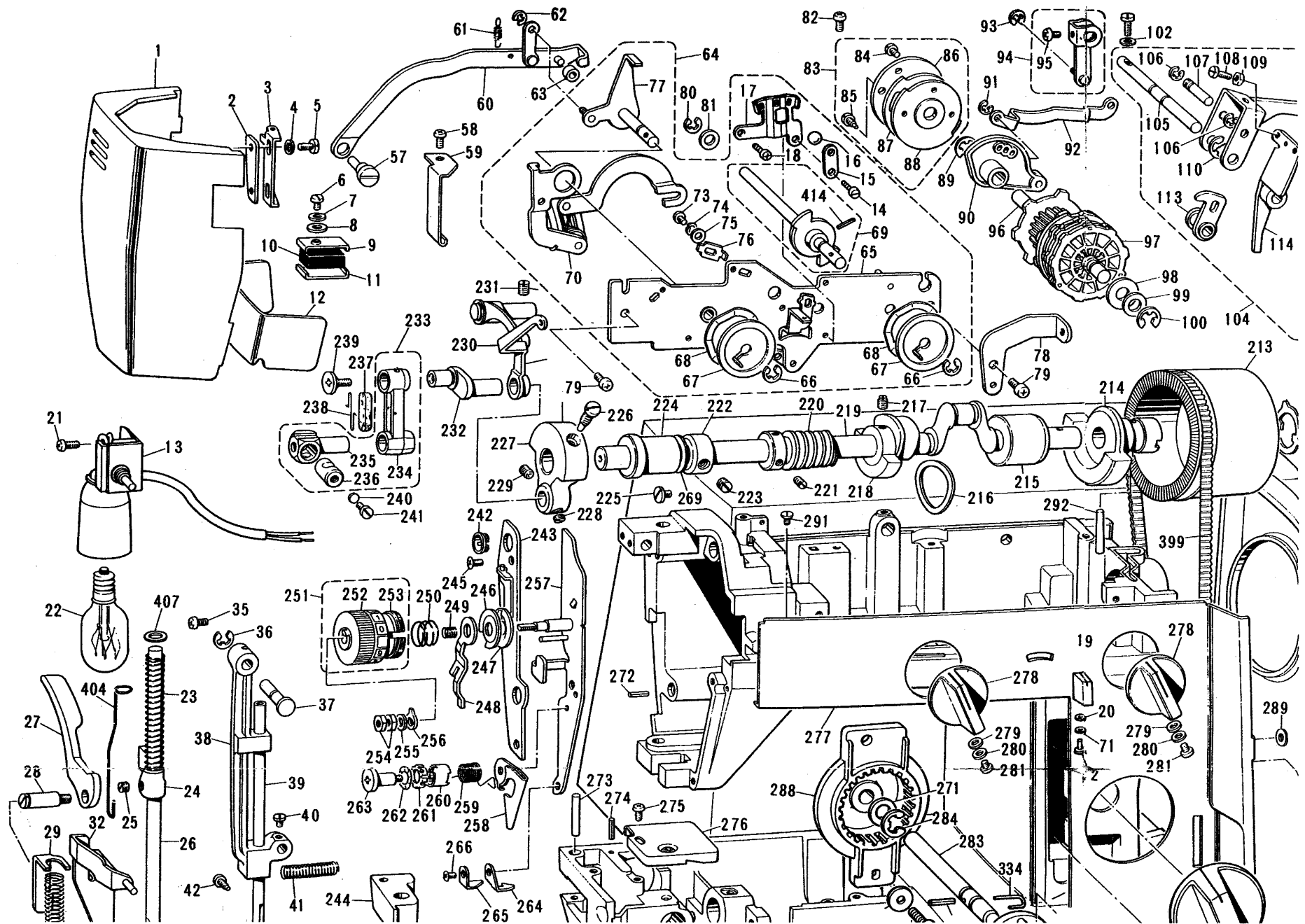
Ref. No.	Parts No.	Parts Name	Ref. No.	Parts No.	Parts Name
301	115000000	Washer	326	013689412	Screw
302	123032001	Screw	327	106288002	Screw
303	131482001	Spring	328	131454001	Collar
304	021670002	Nut	329	014680422	Screw
305	128465001	Shuttle driver assembly	330	131530001	Base plate
306	128466001	Shuttle driver	331	100242003	Screw
307	122429001	Shuttle driver spring	332	129605001	Screw
308	121632001	Screw	334	132871001	Stopper spring
309	128581001	Shuttle hook	335	132934001	Washer
310	128478001	Bobbin	337	132163001	Button
311	128582002	Bobbin case assembly	338	130871001	Horizontal feed rocking shaft assembly
312	121007001	Screw	339	120995000	Horizontal feed rocking shaft
313	128468001	Shuttle race assembly	340	120997000	Feed bar hinge shaft
314	128469001	Shuttle race body	341	100366002	Screw
315	128471001	Shuttle race ring	342	130872000	Feed bar
316	102927000	Pin	343	048040342	Stop ring
317	128472001	Pin	344	102927000	Pin
318	128473001	Shuttle race top spring	345	503154001	Spring
319	125514001	Screw	346	120998001	Spring hanger
320	128474001	Set lever, L	347	100080003	Screw
321	128475001	Set lever, R	348	129373001	Feed dog
322	128476001	Spring	349	120990001	Screw
323	128477001	Stud screw	350	116605001	Taper point stud
324	122977001	Washer	351	129894001	Horizontal feed shaft arm
325	130886000	Shuttle driver shaft bevel gear	352	009681412	Screw



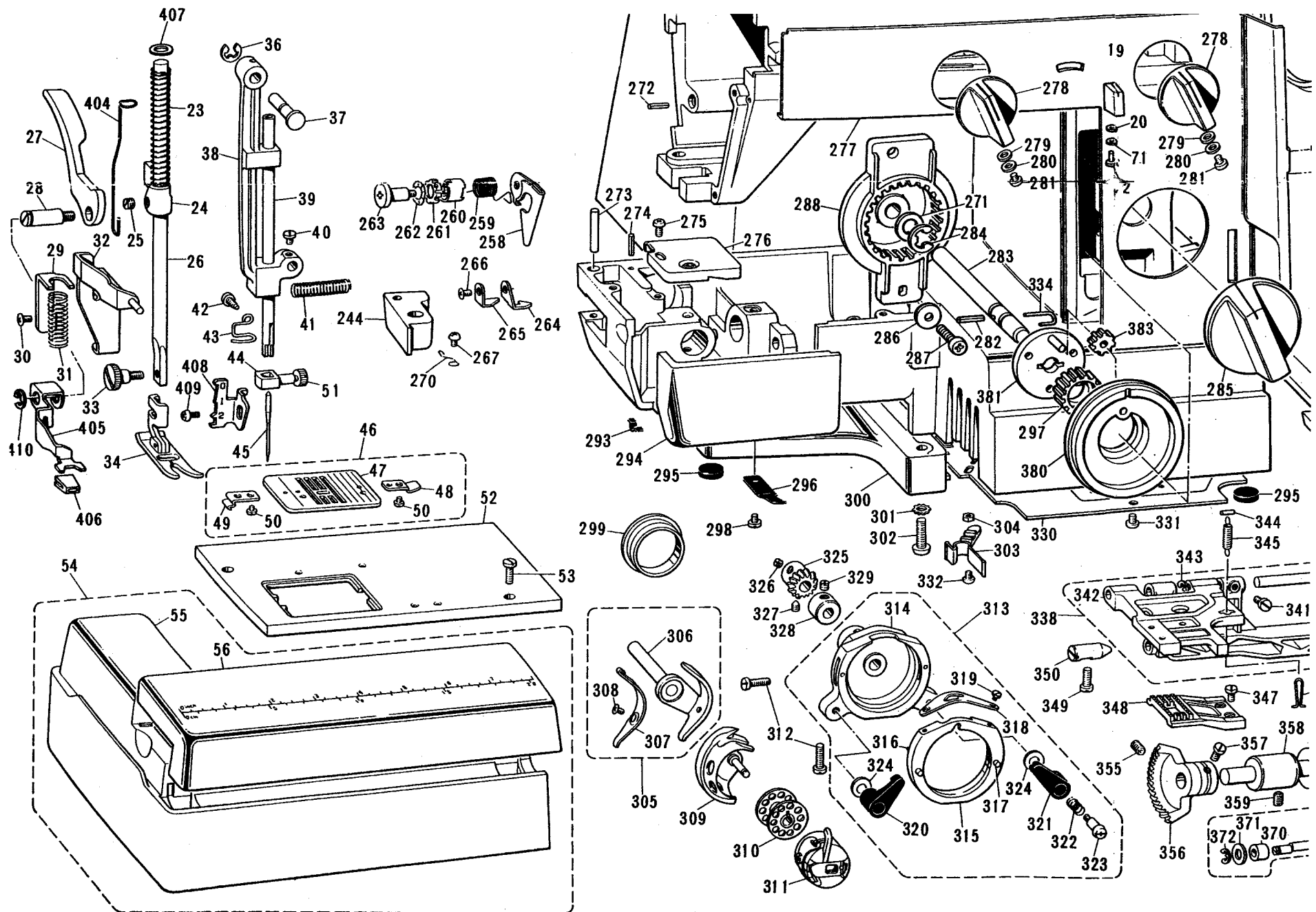
Ref. No.	Parts No.	Parts Name	Ref. No.	Parts No.	Parts Name
353	131331001	Screw	378	100175000	Pin
354	102436001	Taper point stud	379	120681001	Cord bush
355	151602001	Screw	380	132869002	Indicator plate
356	130884000	Lower shaft bevel gear	381	135845001	Gear holder assembly
357	131139001	Screw	383	132866000	Idle gear
358	131191000	Lower shaft bushing, L	385	122372000	Contact pin
359	151604001	Screw	386	021300106	Nut
360	130877000	Vertical feed cam	387	009681214	Screw
361	100251001	Screw	388	131338000	Screw
362	124633000	Lower shaft	389	025680133	Washer
363	131190000	Lower shaft bushing, R	390	021680106	Nut
364	129625001	Lower shaft crank	391	132646001	3P Socket cover
365	009681412	Screw	392	002301605	Screw
366	120990001	Screw	393	132645001	3P Socket body
367	130873001	Vertical feed assembly	394	000711212	Screw
368	130874001	Vertical feed arm	395	028050242	Washer
369	130875001	Stud shaft	396	100579003	Washer
370	123865000	Vertical feed crank roller	397	<del>131351-99339</del>	Motor complete
371	100579003	Washer	398		Controller complete
372	048030342	Stop ring	399	130944001	Belt
373	120990001	Screw	400	124537001	Washer
374	130876000	Vertical feed arm shaft	401	139466001	Spring
375	048050342	Stop ring	402	131328001	Machine cover assembly
376	120990001	Screw	403	122499001	Condenser
377	118352001	Spring	404	125247001	Presser adjusting rod

Ref. No.	Parts No.	Parts Name	Ref. No.	Parts No.	Parts Name
405	125248001	Presser adjusting lever			
406	121194003	Presser adjusting lever knob			
407	100052001	Washer			
408	125510002	Stop plate for press			
409	002670612	Screw			
410	048050342	Stop ring			
411	131398001	Feed regulating bar			
412	131397001	Feed regulating plate			
413	102571003	Nut			
414	047201242	Spring pin			

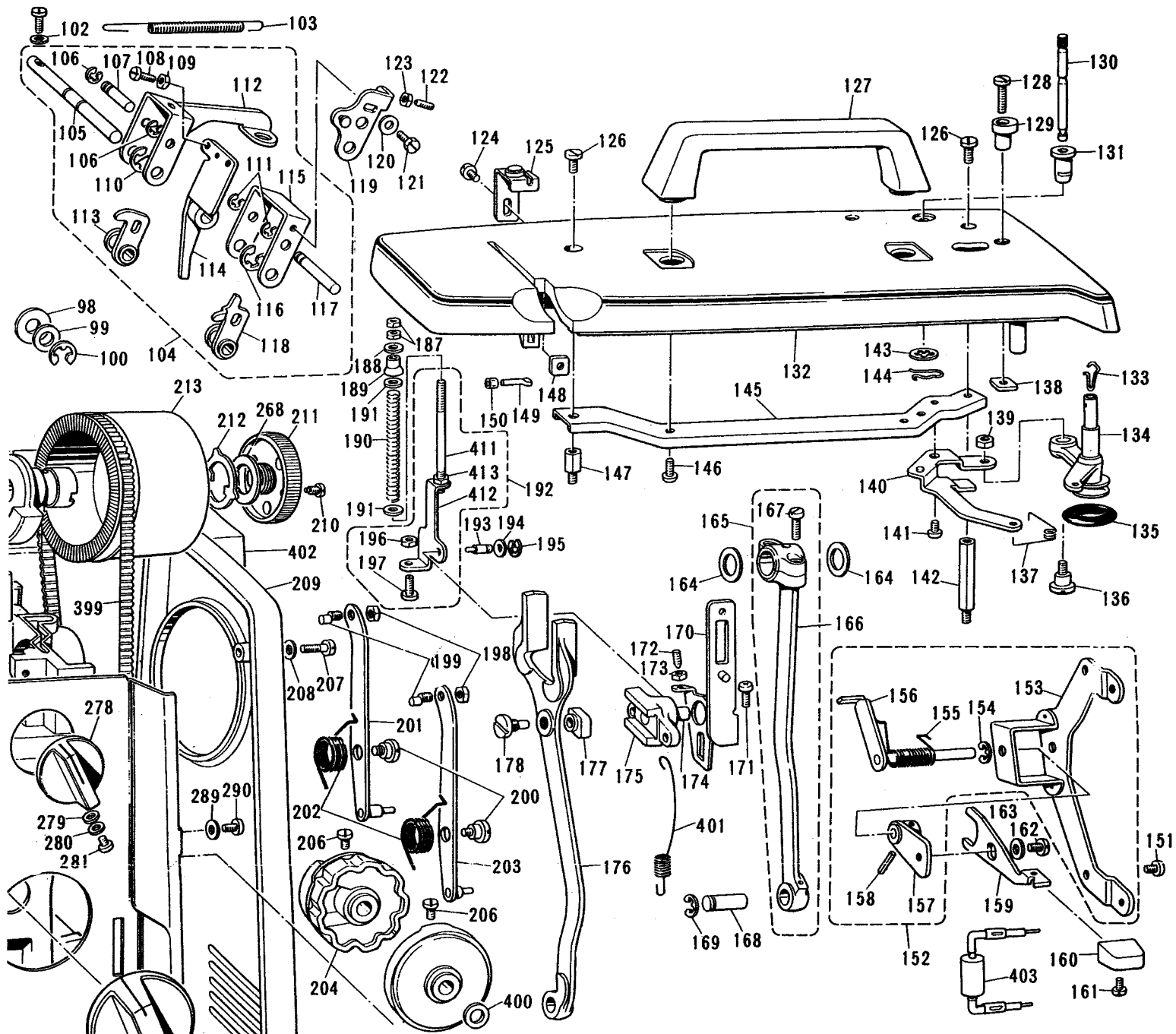
# VX780



# VX780



# VX780



# VX780

