

PARTS REFERENCE LIST

for

Model VX790

REF. NO.	PARTS NO.	PARTS NAME	REF. NO.	PARTS NO.	PARTS NAME
1	137150001	Face plate	41	002681012	Screw
2	131240001	Hinge plate	42	048040342	Stop ring
3	120094001	Face plate hinge	43	123584001	Spring presser plate
4	117838001	Washer	44	123586001	Spring washer
5	009671012	Screw	45	129669001	Control frame body
6	001660413	Screw	46	123589001	Zigzag width control plate
7	025660236	Washer	47	025660132	Washer
8	123023000	Washer	48	124303001	Spring washer
9	131238001	Magnet holder, A	49	009660613	Screw
10	123738000	Magnet	50	136986001	Zigzag link assembly
11	131239001	Magnet holder, B	51	137111001	Zigzag adjusting lever assembly
12	130846001	Reflection plate	52	047251042	Spring pin
13	048050342	Stop ring	53	048090342	Stop ring
14	137001001	BH Lever spring	54	048030342	Stop ring
15	131337001	Screw	55	137073001	Stitch regulating dial shaft joint
16	131428001	BH Lever plate	56	137112001	Stitch regulating dial shaft assembly
17	136998001	BH Lever assembly	57	047251042	Spring pin
18		Sew-light bulb	58	002670412	Screw
19	002680712	Screw	59	123702001	Needle position stopper
20		Sew-light assembly	60	101026001	Steel ball
21	124503002	Spring	61	124699001	Needle position notched spring
22	048030342	Stop ring	62	110215002	Screw
23	123600000	Roller	63	131241001	Belt cover supporter
24	123597001	Zigzag connecting rod assembly	64	002681012	Screw
25	105433001	Eccentric stud	65	137015000	Pattern cam shaft
26	120454001	Stop ring	66	048060342	Stop ring
27	025350132	Washer	67	128491001	Washer
28	048020342	Stop ring	68	137003001	Pattern cam assembly
29	136995001	BH Change shaft	69	137008001	BH Change cam assembly
30	002670612	Screw	70	137006000	Feed control cam
31	136994001	BH Change arm	71	137014000	SS Cam
32	048020342	Stop ring	72	128491001	Washer
33	120653001	Cord bush	73	137063001	Cam stopper
34	136997001	BH Spring	74	025350332	Washer
35	136000001	BH Stopper assembly	75	062671614	Screw
36	136996001	BH notched spring	76	025350132	Washer
37	025350332	Washer	77	120454001	Stop ring
38	002670612	Screw	78	048030342	Stop ring
39	002670612	Screw	79	002670712	Screw
40	137114001	Frame assembly	80	131471001	Feed adjusting arm

REF. NO.	PARTS NO.	PARTS NAME	REF. NO.	PARTS NO.	PARTS NAME
81	137007001	Feed control cam rod	121	188058001	Spool pin
82	002671012	Screw	122	188059001	Spool pin stand
83	137016001	Finger shaft assembly	123	121846001	Bobbin presser
84	137021001	Finger frame	124	062671614	Screw
85	021670102	Nut	125	408883002	Screw
86	137024001	BH Finger assembly	126	130887001	Bobbin winder assembly
87	120258001	Screw	127	125928000	Spring
88	021670102	Nut	128	130888001	Bobbin winder bracket assembly
89	137022001	Feed finger	129	120448001	Bobbin winder rubber ring
90	120258001	Screw	130	120263001	Stud screw
91	137191001	Stop ring	131	123661001	Spring
92	137027001	Spring	132	131236001	Top cover stud R
93	137028001	BH Needle position lever	133	002670512	Screw
94	021670102	Nut	134	130890001	Bobbin winder supporting plate
95	125322001	Screw	135	021680202	Nut
96	103978002	Screw	136	121857001	Nut
97	021660102	Nut	137	189908001	Stop ring
98	048030342	Stop ring	138	188060001	Spring
99	137032001	BHZ Finger assembly	139	130862001	Top cover bracket
100	137038001	BH Connecting plate	140	002681012	Screw
101	137039001	Release lever	141	131237001	Top cover stud L
102	120258001	Screw	142	121857001	Nut
103	137019001	Z Finger assembly	143	131321001	Tube
104	021670102	Nut	144	131235001	Pin
105	137018001	Z Finger frame	145	102571003	Nut
106	137020001	Z Finger frame shaft	146	025680232	Washer
107	137067001	Finger shaft	147	128507001	Collar
108	136982001	Screw	148	113431002	Washer
109	025350332	Washer	149	128506001	Spring
110	103978002	Screw	150	113431002	Washer
111	021660102	Nut	151	137064001	Feed adjusting bar
112	137040001	Zigzag adjusting arm	152	128452001	Pin
113	137054001	Spring	153	103813001	Washer
114	125586001	Spring	154	048030342	Stop ring
115	062670704	Screw	155	123547000	Feed regulator stud
116	130894001	Bobbin winder thread guide assembly	156	125719000	Feed regulator
117	408883002	Screw	157	137141001	Feed regulating lever assembly
118	130940	Top cover	158	002670612	Screw
119	130861	Carrying handle	159	137096001	Spring
120	103366001	Felt	160	137095	Feed regulating lever knob

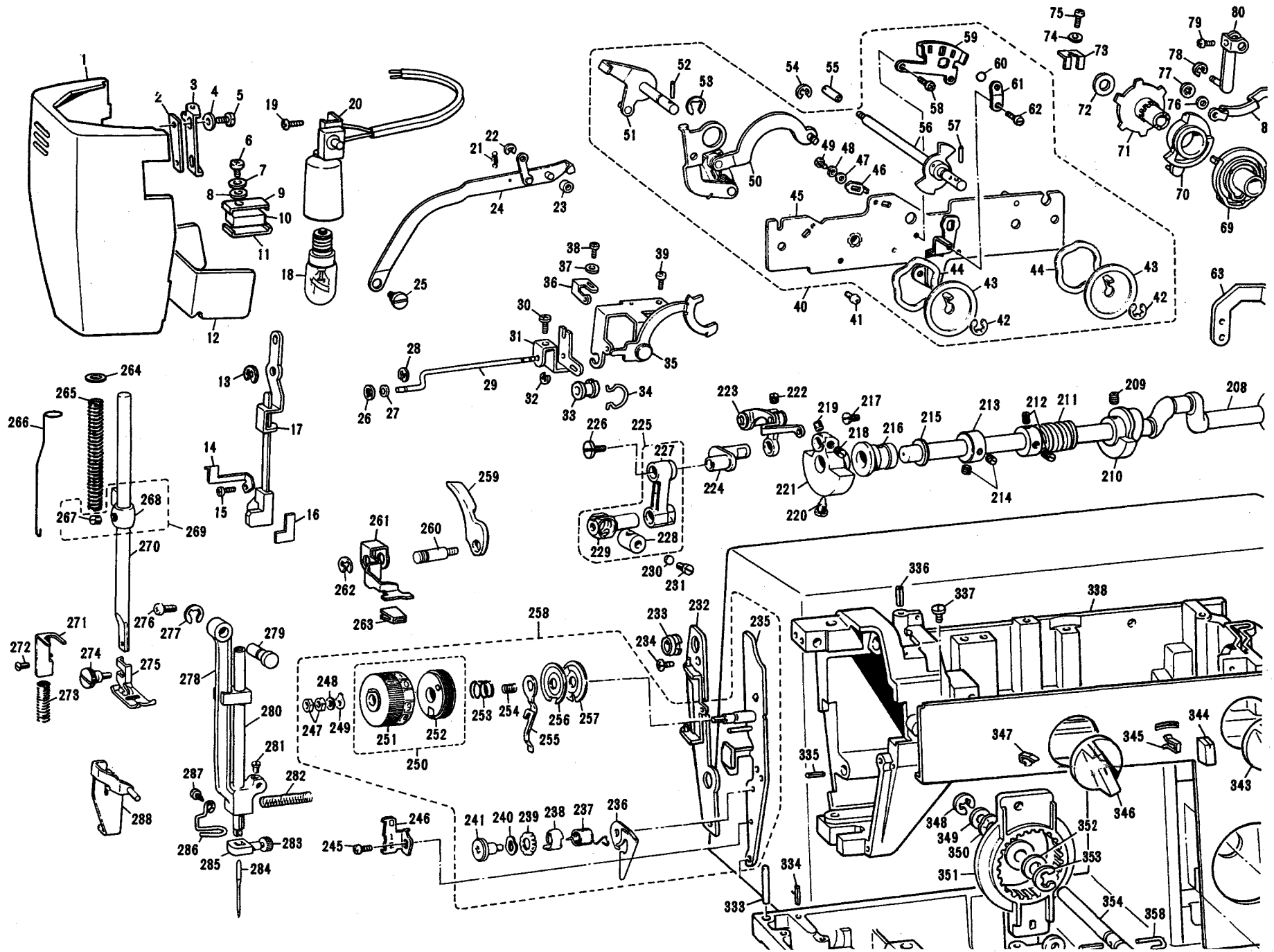
REF. NO.	PARTS NO.	PARTS NAME	REF. NO.	PARTS NO.	PARTS NAME
161	131244001	Feed regulating lever plate	201	132170	Stop motion knob
162	048040342	Stop ring	202	125096001	Washer
163	128415001	Spring	203	100041002	Stop motion washer
164	131247001	Feed regulating lever arm	204	130864	Balance wheel
165	137142001	Feed regulating lever	205	122422000	Balance wheel bushing
166	047201042	Spring pin	206	120438001	Pin
167	137103001	Feed regulator adjusting plate	207	131189000	Upper shaft bushing, R
168	002681212	Screw	208	128433000	Upper shaft
169	103978002	Screw	209	151605001	Screw
170	021660102	Nut	210	131335001	Feed cam assembly
171	139466001	Spring	211	131653001	Worm
172	118519001	Washer	212	151602001	Screw
173	128461001	Crank rod assembly	213	132951000	Collar
174	129991001	Stud	214	101706003	Screw
175	048050342	Stop ring	215	188440001	Washer
176	129991001	Stud	216	131188000	Upper shaft bushing, L
177	048050342	Stop ring	217	129558001	Screw
178	115234001	Slide block assembly	218	100251001	Screw
179	100067001	Slide block stud	219	101706003	Screw
180	100066001	Slide block	220	129559001	Screw
181	130870001	Forked connecting rod	221	124614000	Eccentric counter weight
182	124616000	Washer	222	151604001	Screw
183	002680712	Screw	223	129561001	Thread take-up lever assembly
184	048040342	Stop ring	224	120582001	Needle bar crank
185	123660001	Stud	225	129919001	Needle bar crank rod assembly
186	137052001	Release lever	226	132051002	Screw
187	137051001	Release lever assembly	227	129920000	Needle bar crank rod
188	048040342	Stop ring	228	120109001	Needle bar clamp
189	123669001	Spring	229	120108001	Needle bar clamp stud
190	123645001	Screw	230	100507000	Metal plate
191	102571003	Nut	231	100366002	Screw
192	137085001	Z Selecting lever assembly	232	137117001	Thread guard B assembly
193	129569001	Stud screw	233	120653001	Cord bush
194	137044001	Spring	234	131337001	Screw
195	137050001	Selecting cam	235	131326001	Thread guard A
196	009670512	Screw	236	120336001	Thread take-up spring cover
197	137056001	Stud screw	237	120337001	Thread take-up spring
198	137045001	Feed selecting lever	238	120436002	Thread take-up spring case B
199	130944001	Belt 20 1/8"	239	120435002	Thread take-up spring case A
200	100043003	Stop motion knob screw	240	120265001	Spring washer

REF. NO.	PARTS NO.	PARTS NAME	REF. NO.	PARTS NO.	PARTS NAME
241	129581001	Stud screw	281	123185001	Screw
242	120339001	Thread guide	282	120110001	Spring
243	120340001	Thread guide	283	131226001	Needle clamp screw
244	131337001	Screw	284	100028014	Needle #14
245	002670612	Screw	285	129627001	Needle clamp
246	125510002	Stop plate for press	286	128391001	Needle bar thread guide
247	021680202	Nut	287	100139001	Screw
248	110735001	Washer	288	135832001	Tension releaser, A
249	120329001	Tension control knob stopper	289	130967001	Zigzag needle plate assembly
250	125272	Tension control knob assembly	290	130936001	Zigzag needle plate
251	125273	Tension control knob	291	116587001	Needle plate spring, R
252	125274000	Tension control ring	292	125139001	Screw
253	129993001	Tension spring	293	116588001	Needle plate spring, L
254	125275001	Spring	294	124610003	Upper plate
255	125302001	Tension releaser, B	295	062671004	Screw
256	125270001	Tension disc	296	130851001	Accessory table assembly
257	125269001	Tension disc	297	130856001	Accessory table cover
258	131257	Thread guard A assembly	298	130853001	Accessory table
259	125165003	Presser foot lifter	299	128582002	Bobbin case assembly
260	136984001	Stud screw	300	128478001	Bobbin
261	125248001	Presser adjusting lever	301	128581001	Shuttle hook
262	048050342	Stop ring	302	128465001	Shuttle driver assembly
263	121194003	Presser adjusting lever knob	303	128466001	Shuttle driver
264	100052001	Washer	304	122429001	Shuttle driver spring
265	125162001	Presser bar spring	305	121632001	Screw
266	125247001	Presser adjusting rod	306	121007001	Screw
267	100058003	Screw	307	122977001	Washer
268	136707000	Presser bar guide bracket	308	128474001	Set lever, L
269	136706001	Presser bar guide bracket assembly	309	128477001	Stud screw
270	128437000	Presser bar	310	128476001	Spring
271	121197001	Tension releaser spring bracket	311	128475001	Set lever, R
272	131337001	Screw	312	122977001	Washer
273	121196001	Spring	313	128470001	Shuttle race ring
274	129984001	Thumb screw	314	128472001	Pin
275	125465001	Zigzag presser foot assembly	315	102927000	Pin
276	002680712	Screw	316	128469001	Shuttle race body
277	048050342	Stop ring	317	128473001	Shuttle race top spring
278	128599001	Needle bar supporter	318	125514001	Screw
279	129560001	Needle bar supporter stud	319	128468001	Shuttle race assembly
280	136872001	Needle bar	320	014680422	Screw

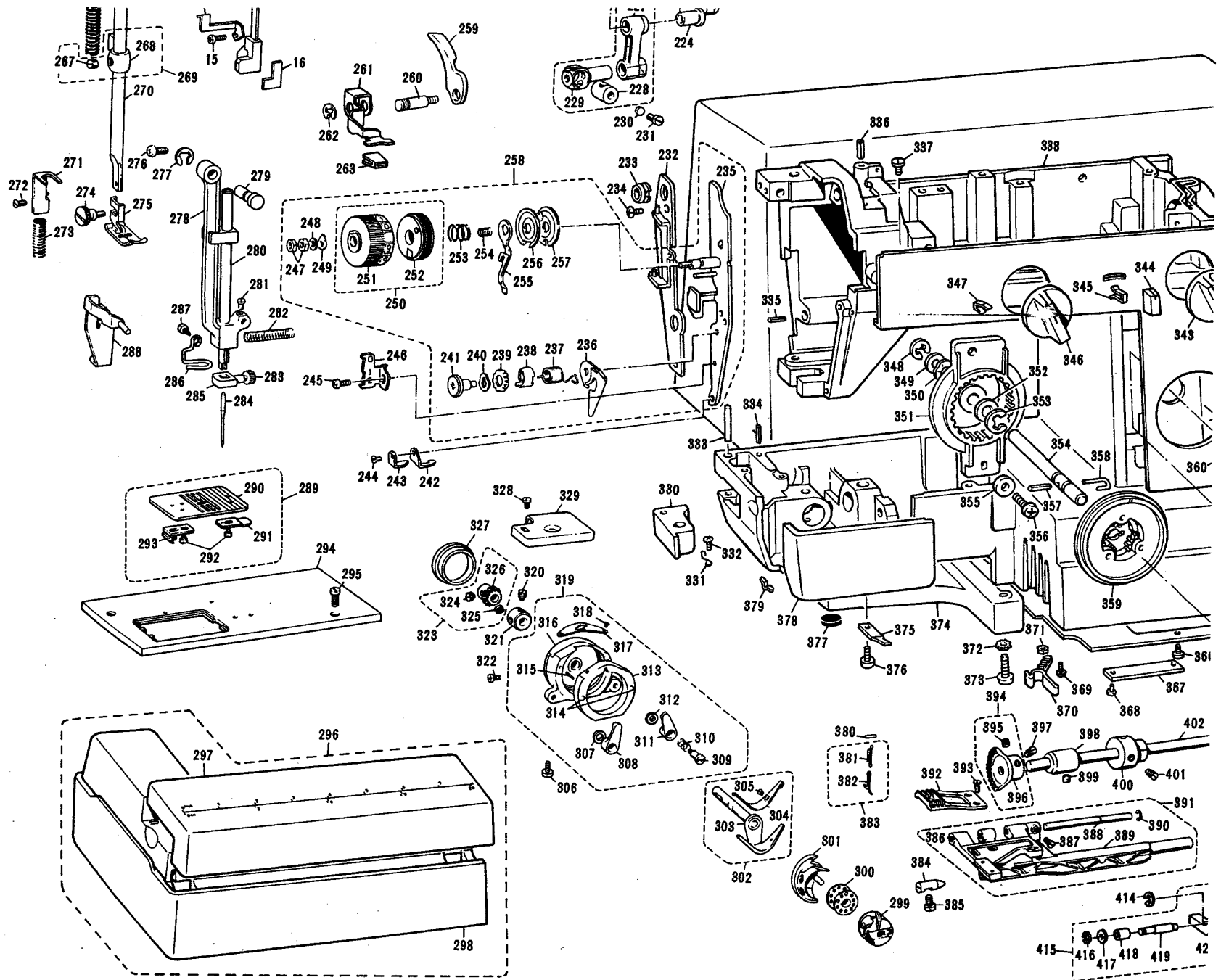
REF. NO.	PARTS NO.	PARTS NAME	REF. NO.	PARTS NO.	PARTS NAME
321	131454001	Collar	361	132868	Pattern selecting dial
322	121007001	Screw	362	132934001	Washer
323	130885001	Shuttle driver shaft gear assembly	363	132163001	Button
324	106288002	Screw	364	130157001	Rubber cushion
325	013689412	Screw	365	131529001	Base plate
326	130886000	Shuttle driver shaft gear	366	100242003	Screw
327	116577001	Cover	367	122995001	Machine number plate
328	002670612	Screw	368	116231001	Pin
329	139100001	Gear cover	369	129605001	Screw
330	130857001	Accessory table holder	370	131482001	Spring
331	131481001	Spring	371	021670102	Nut
332	002670512	Screw	372	115000000	Washer
333	130858000	Pin	373	123032001	Screw
334	129180001	Spring pin	374	130850001	Base plate foot
335	123513000	Spring pin	375	123768001	Spring
336	047301242	Spring pin	376	000670403	Screw
337	100242003	Screw	377	130157001	Rubber cushion
338	137148001	Arm bed assembly	378	130848001	Hinged door
339	132592002	Sewing machine cover	379	128416001	Hinge plate
340		Arm decoration plate	380	102927000	Pin
341	002670612	Screw	381	503154001	Spring
342	025350332	Washer	382	120998001	Spring hanger
343	137100	Adjusting knob	383	181779001	Spring hanger assembly
344	137102	Needle position knob	384	116605001	Taper point stud
345	137096001	Spring	385	120990001	Screw
346	137100	Adjusting knob	386	130872000	Feed bar
347	137166001	Spring	387	100366002	Screw
348	048050342	Stop ring	388	120997000	Feed bar shaft
349	128491001	Washer	389	120995000	Horizontal feed rocking shaft
350	124730001	Spring washer	390	048040342	Stop ring
351	132864000	Gear box for pattern selecting dial	391	130871001	Horizontal feed rocking shaft assembly
352	128491001	Washer	392	129373001	Feed dog
353	048050342	Stop ring	393	100080003	Screw
354	137156001	Pattern selecting dial shaft	394	130883001	Lower shaft gear assembly
355	025350332	Washer	395	151602001	Screw
356	002670812	Screw	396	130884000	Lower shaft gear
357	047251242	Spring pin	397	131139001	Screw
358	132871001	Stopper spring	398	131191000	Lower shaft bushing, L
359	136847	Indicator plate	399	151604001	Screw
360	132865000	Drive gear	400	130877000	Vertical feed cam

REF. NO.	PARTS NO.	PARTS NAME	REF. NO.	PARTS NO.	PARTS NAME
401	100251001	Screw	441	000360056	Controller complete
402	124633000	Lower shaft	442	130847	Belt cover
403	131190000	Lower shaft bushing, R	443	025350134	Washer
404	129624001	Lower shaft crank assembly	444	062671614	Screw
405	129625001	Lower shaft crank			
406	009681412	Screw			
407	120990001	Screw			
408	129893001	Horizontal feed shaft arm assembly			
409	129894001	Horizontal feed shaft arm			
410	009681412	Screw			
411	102436001	Taper point stud			
412	120990001	Screw			
413	131331001	Screw			
414	048050342	Stop ring			
415	137086001	Vertical feed assembly			
416	048030342	Stop ring			
417	100579003	Washer			
418	123865000	Vertical feed roller			
419	137088001	Vertical feed roller shaft			
420	137087001	Vertical feed arm			
421	014680422	Screw			
422	100175000	Pin			
423	137108001	Spring			
424	130876000	Vertical feed shaft			
425	120990001	Screw			
426	120681001	Cord bush			
427	100579003	Washer			
428	028050242	Spring washer			
429	000711212	Screw			
430		Motor complete			
431	122499001	Condenser			
432	021300106	Nut			
433	060681204	Screw			
434	132645001	3P Socket body			
435	025680133	Washer			
436	021680106	Nut			
437	122372000	Contact pin			
438	131338000	Screw			
439	132646001	3P Socket cover			
440	002301605	Screw			

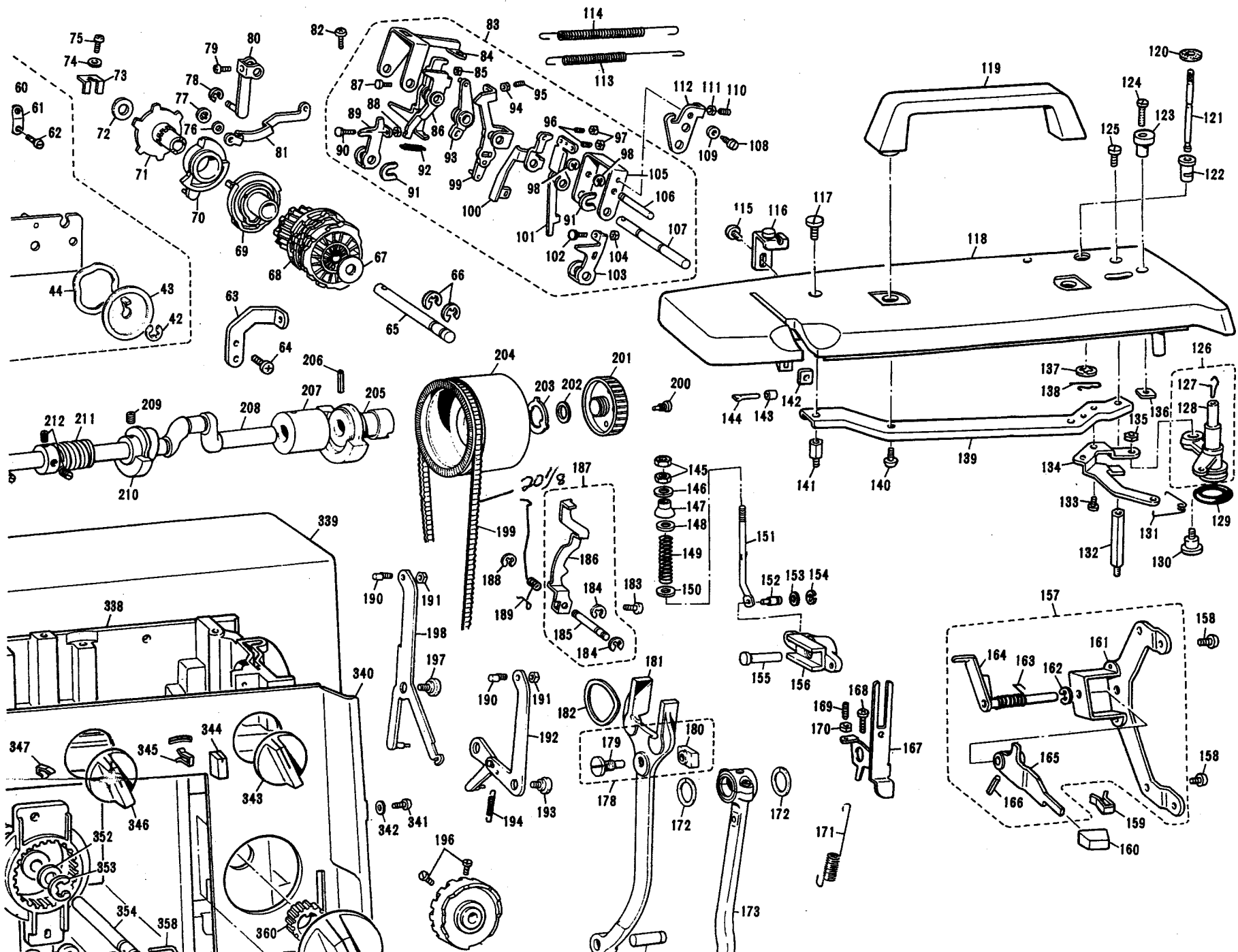
Brother VX790



Brother VX790



Brother VX790



Brother VX790

