

PARTS REFERENCE LIST

for

Model VX880

REF. NO.	PARTS NO.	PARTS NAME	REF. NO.	PARTS NO.	PARTS NAME
1	138629001	Face plate	41	048030342	Stop ring
2	062671614	Screw	42	X00133001	Z Slider
3	025350134	Washer	43	048030342	Stop ring
4	130128001	Washer	44	X00134001	Needle position slider
5	138630003	Face plate decoration plate	45	X00216001	Slide shaft
6	138641002	Face plate decoration sheet	46	X00213000	F Slide gear
7	123518001	Stop ring	47	X00214001	F Slider
8	138642001	Reflector	48	002680712	Screw
9	002670612	Screw	49	037280615	Screw
10	124703001	Cord holder, C	50	040280615	Screw
11	002680712	Screw	51	138668003	Decoration plate base
12	130896001	Lamp holder	52	X00217000	Pattern cam shaft
13	X00261001	Sew-light assembly	53	048060342	Stop ring
14	103386002	Screw	54	123616001	Washer
15	201434000	Sew-light bulb	55	132882000	Pattern cam assembly
16	X00136001	Zigzag connecting rod assembly	56	128579001	BH Feed control cam
17	X00138001	Eccentric stud	57	048030342	Stop ring
18	124503002	Spring	58	X00280001	Feed control cam rod
19	048030342	Stop ring	59	048030342	Stop ring
20	123600000	Roller	60	002670712	Screw
21	X00209001	Frame assembly	61	138628001	Top cover
22	X00125001	Zigzag adjusting lever assembly	62	062671004	Screw
23	048090342	Stop ring	63	130894001	Bobbin winder thread guide assembly
24	128534001	Zigzag link assembly	64	X00155001	Top cover thread guide
25	002670412	Screw	65	135337002	Carrying handle
26	X00215001	F Slider guide	66	188058001	Spool pin
27	X00211001	Stitch regulating dial shaft assembly	67	188059001	Spool pin stand
28	123586001	Spring washer	68	136937001	Screw
29	X00129001	Zigzag width control plate, R	69	062671614	Screw
30	025660132	Washer	70	121846001	Bobbin presser
31	124303001	Spring washer	71	121857001	Nut
32	009660613	Screw	72	189908001	Stop ring
33	X00130001	Zigzag width control plate, L	73	188060001	Spring
34	X00210001	Control frame body	74	135338001	Carrying handle shaft
35	123586001	Spring washer	75	048030342	Stop ring
36	X00135000	Spring presser plate	76	117851001	Washer
37	048040342	Stop ring	77	062671004	Screw
38	048040342	Stop ring	78	121857001	Nut
39	X00132001	Slide shaft holder	79	049500145	Speed nut
40	002670412	Screw	80	120263001	Stud screw

REF. NO.	PARTS NO.	PARTS NAME	REF. NO.	PARTS NO.	PARTS NAME
81	X00140001	Bobbin winder assembly	121	151605001	Screw
82	125928000	Spring	122	131335001	Feed cam
83	X00141001	Bobbin winder bracket assembly	123	151602001	Screw
84	048050342	Stop ring	124	131653001	Worm
85	X00142001	Spacer	125	101706003	Screw
86	123661001	Spring	126	132951000	Set collar
87	120448001	Bobbin winder rubber ring	127	188440001	Washer
88	130094001	Bobbin winder supporting plate	128	131188000	Upper shaft bushing, L
89	037300815	Screw	129	060680503	Screw
90	021680202	Nut	130	101706003	Screw
91	X00192001	Spring	131	100251001	Screw
92	X00208001	Feed regulator assembly	132	129559001	Screw
93	137488001	Pin	133	137576001	Eccentric counter weight
94	X00237001	Spring	134	151604001	Screw
95	X00174001	BH Feed cut plate	135	138288001	Thread take-up lever assembly
96	X00175000	Feed regulator	136	120582001	Needle bar crank
97	123547000	Feed regulator stud	137	129919001	Needle bar crank rod assembly
98	118519001	Washer	138	129920000	Needle bar crank rod
99	128461001	Crank rod assembly	139	120109001	Needle bar clamp
100	129991001	Stud	140	120108001	Needle bar clamp stud
101	048050342	Stop ring	141	132051002	Screw
102	048050342	Stop ring	142	100507000	Metal plate
103	129991001	Stud	143	100366002	Screw
104	130870001	Forked connecting rod	144	130869001	Patch-o-matic pressure adjuster
105	115234001	Slide block assembly	145	048050342	Stop ring
106	100067001	Slide block stud	146	062671004	Screw
107	100066001	Slide block	147	138656001	Stud screw
108	124616000	Washer	148	138655001	Presser foot lifter
109	124246001	Stop ring	149	X00153001	Tension releaser
110	130897001	Spring	150	129569001	Stud screw
111	100043003	Stop motion knob screw	151	138653001	Presser bar spring
112	138652001	Stop motion knob	152	151605001	Screw
113	125096001	Washer	153	138654001	Presser bar bracket
114	100041002	Stop motion washer	154	130948000	Presser bar
115	138635001	Balance wheel	155	129984001	Thumb screw
116	130944001	Belt	156	131046001	Presser foot assembly
117	120438001	Pin	157	048050342	Stop ring
118	122422000	Balance wheel bushing	158	021680202	Nut
119	131189000	Upper shaft bushing, R	159	151607001	Screw
120	128433000	Upper shaft	160	128599001	Needle bar supporter

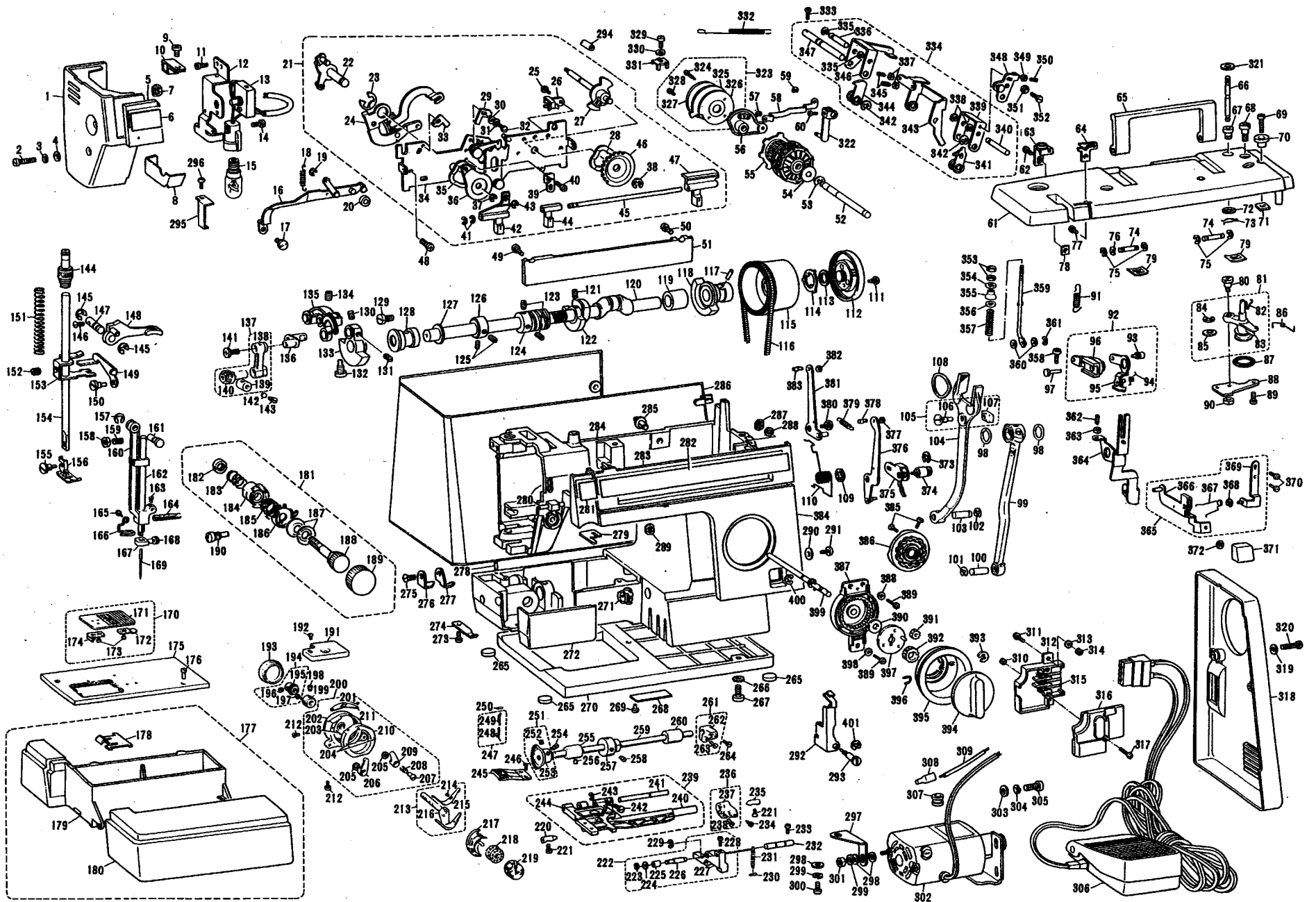
REF. NO.	PARTS NO.	PARTS NAME	REF. NO.	PARTS NO.	PARTS NAME
161	129560001	Needle bar supporter stud	201	125514001	Screw
162	136872001	Needle bar	202	128469001	Shuttle race body
163	123185001	Screw	203	102927000	Pin
164	120110001	Spring	204	128472001	Pin
165	100139001	Screw	205	122977001	Washer
166	128391001	Needle bar thread guide	206	128474001	Set lever, L
167	129627001	Needle clamp	207	128477001	Stud screw
168	131226001	Needle clamp screw	208	128476001	Spring
169	100028014	Needle #14	209	128475001	Set lever, R
170	130967001	Needle plate assembly	210	128471001	Shuttle race ring
171	130936001	Needle plate	211	128473001	Shuttle race top spring
172	116587001	Needle plate spring, R	212	121007001	Screw
173	125139001	Screw	213	128465001	Shuttle driver assembly
174	116588001	Needle plate spring, L	214	121632001	Screw
175	124610004	Upper plate	215	122429001	Shuttle driver spring
176	062671004	Screw	216	128466001	Shuttle driver
177	138643001	Accessory table assembly	217	128581001	Shuttle hook
178	138644001	Accessory table notched spring	218	128478001	Bobbin
179	138633001	Accessory table	219	128582003	Bobbin case assembly
180	138634001	Accessory table cover	220	116605001	Taper point stud
181	X00144003	Upper tension complete	221	120990001	Screw
182	X00149001	Tension control nut	222	130873001	Vertical feed assembly
183	X00152001	Tension spring	223	048030342	Stop ring
184	X00146000	Tension control bushing	224	100579003	Washer
185	X00151001	Thread take-up spring	225	123865000	Vertical feed roller
186	X00150001	Tension disc washer	226	130875001	Vertical feed roller shaft
187	139262001	Tension disc	227	130874001	Vertical feed arm
188	X00147001	Tension control stud	228	120990001	Screw
189	X00145003	Tension control knob	229	048050342	Stop ring
190	X50065001	Screw	230	100175000	Pin
191	139100001	Gear cover	231	118352001	Spring
192	002670612	Screw	232	130876000	Vertical feed shaft
193	116577001	Cover	233	120990001	Screw
194	130885001	Shuttle driver shaft gear assembly	234	131331001	Screw
195	130886000	Shuttle driver shaft gear	235	102436001	Taper point stud
196	106288002	Screw	236	129893001	Horizontal feed shaft arm assembly
197	013689412	Screw	237	129894001	Horizontal feed shaft arm
198	014680422	Screw	238	009681412	Screw
199	131454001	Collar	239	130871001	Horizontal feed rocking shaft assembly
200	128468001	Shuttle race assembly	240	120995000	Horizontal feed rocking shaft

REF. NO.	PARTS NO.	PARTS NAME	REF. NO.	PARTS NO.	PARTS NAME
241	120997000	Feed bar shaft	281	138649002	Arm decoration sheet, B
242	100366002	Screw	282	X00244001	Arm decoration sheet, A
243	048040342	Stop ring	283	138692002	Arm decoration plate
244	130872000	Feed bar	284	138639001	Arm bed
245	129373001	Feed dog	285	132163001	Machine cover hook
246	100080003	Screw	286	X00156001	Machine cover
247	181779001	Spring hanger assembly	287	123518001	Stop ring
248	120998001	Spring hanger	288	025040333	Washer
249	503154001	Spring	289	123518001	Stop ring
250	102927000	Pin	290	025350236	Washer
251	130883001	Lower shaft gear assembly	291	000670702	Screw
252	151602001	Screw	292	X00162001	Releaser lever
253	130884000	Lower shaft gear	293	X00163001	Stud screw
254	131139001	Screw	294	137073001	Stitch regulating dial shaft joint
255	131191000	Lower shaft busing, L	295	128412001	Cord guide plate
256	151604001	Screw	296	002670612	Screw
257	130877000	Vertical feed cam	297	130945001	Motor support plate
258	100251001	Screw	298	102707003	Washer
259	124633000	Lower shaft	299	028040242	Spring washer
260	131190000	Lower shaft bushing, R	300	002670712	Screw
261	129624001	Lower shaft crank assembly	301	202426002	Nut
262	129625001	Lower shaft crank	302		Motor complete
263	009681412	Screw	303	100579003	Washer
264	120990001	Screw	304	028050242	Spring washer
265	130157001	Rubber cushion for base plate	305	000711212	Screw
266	124242001	Washer	306		Controller complete
267	000711212	Screw	307	120681001	Cord bush
268	122995001	Machine number plate	308	214808000	Connector
269	116231001	Pin	309	X00232001	Lead wire
270	138632001	Base plate	310	021300106	Nut
271	130963001	Guide ring	311	060681204	Screw
272	130848001	Hinged door	312	138596001	3P Socket body
273	000670403	Screw	313	025680133	Washer
274	137646001	Spring	314	021680106	Nut
275	131337001	Screw	315	138598000	Contact pin
276	120340001	Thread guide	316	138597001	3P Socket cover
277	120339001	Thread guide	317	002301605	Screw
278	129180001	Spring pin	318	138631001	Belt cover
279	X00154001	Thread guide	319	025350134	Washer
280	047413650	Spring pin	320	062671614	Screw

REF. NO.	PARTS NO.	PARTS NAME	REF. NO.	PARTS NO.	PARTS NAME
321	103366001	Felt	361	048030342	Stop ring
322	131471001	Feed adjusting arm	362	103978002	Screw
323	131141001	BH Feed cam assembly	363	021660102	Nut
324	128573001	Screw	364	X00176001	Feed regulator adjusting plate
325	131142001	BH Feed cam B	365	X00184001	Feed adjusting lever assembly
326	128517000	BH Feed cam F	366	X00185001	Feed adjusting lever
327	123613001	BH Feed cam O	367	X00187001	Spring
328	009670812	Screw	368	048030342	Stop ring
329	062671614	Screw	369	135395001	Feed adjusting lever supporter
330	025350332	Washer	370	002670612	Screw
331	137063001	Cam stopper	371	X00188001	Reverse sewing push button
332	125586001	Spring	372	120454001	Stop ring
333	002671012	Screw	373	048070342	Stop ring
334	138228001	Finger shaft assembly	374	X00230001	Stud
335	048030342	Stop ring	375	X00168001	Feed selecting lever B
336	139474001	Finger frame shaft	376	X00165001	Z Selecting lever assembly
337	021660102	Nut	377	102571003	Nut
338	048030342	Stop ring	378	123645001	Screw
339	123624001	Z Finger frame	379	138473001	Spring
340	123628001	Z Finger frame shaft	380	129569001	Stud screw
341	123625001	Z Finger assembly	381	X00167001	Feed selecting lever A
342	048050342	Stop ring	382	102571003	Nut
343	137444001	Releaser lever assembly	383	123645001	Screw
344	123631001	Finger assembly	384	X00206001	Arm panel
345	013978002	Screw	385	009670512	Screw
346	128521001	Finger frame	386	X00190001	Selecting cam
347	138229001	Finger shaft	387	132864000	Gear box for pattern selecting dial
348	129646001	Zigzag adjusting arm	388	025350132	Washer
349	021660102	Nut	389	002670812	Screw
350	103978002	Screw	390	128491001	Washer
351	025350132	Washer	391	132866000	Idle gear
352	136982001	Screw	392	132865000	Drive gear
353	102571003	Nut	393	048050342	Stop ring
354	025680232	Washer	394	X00173001	Selecting dial
355	128507001	Collar	395	X00169002	Selecting dial frame
356	113431002	Washer	396	132871001	Stopper spring
357	128506001	Spring	397	136850001	Gear holder assembly
358	002681212	Screw	398	025350332	Washer
359	137064001	Feed adjusting bar	399	137400001	Pattern selecting dial shaft assembly
360	103813001	Washer	400	048050342	Stop ring

REF. NO.	PARTS NO.	PARTS NAME	REF. NO.	PARTS NO.	PARTS NAME
401	048050342	Stop Ring			

VX880



VX780

VX780

VX780

VX780