

PARTS LIST

for Models

JF 1004

JF 1012 (BL1108)

JF 1014

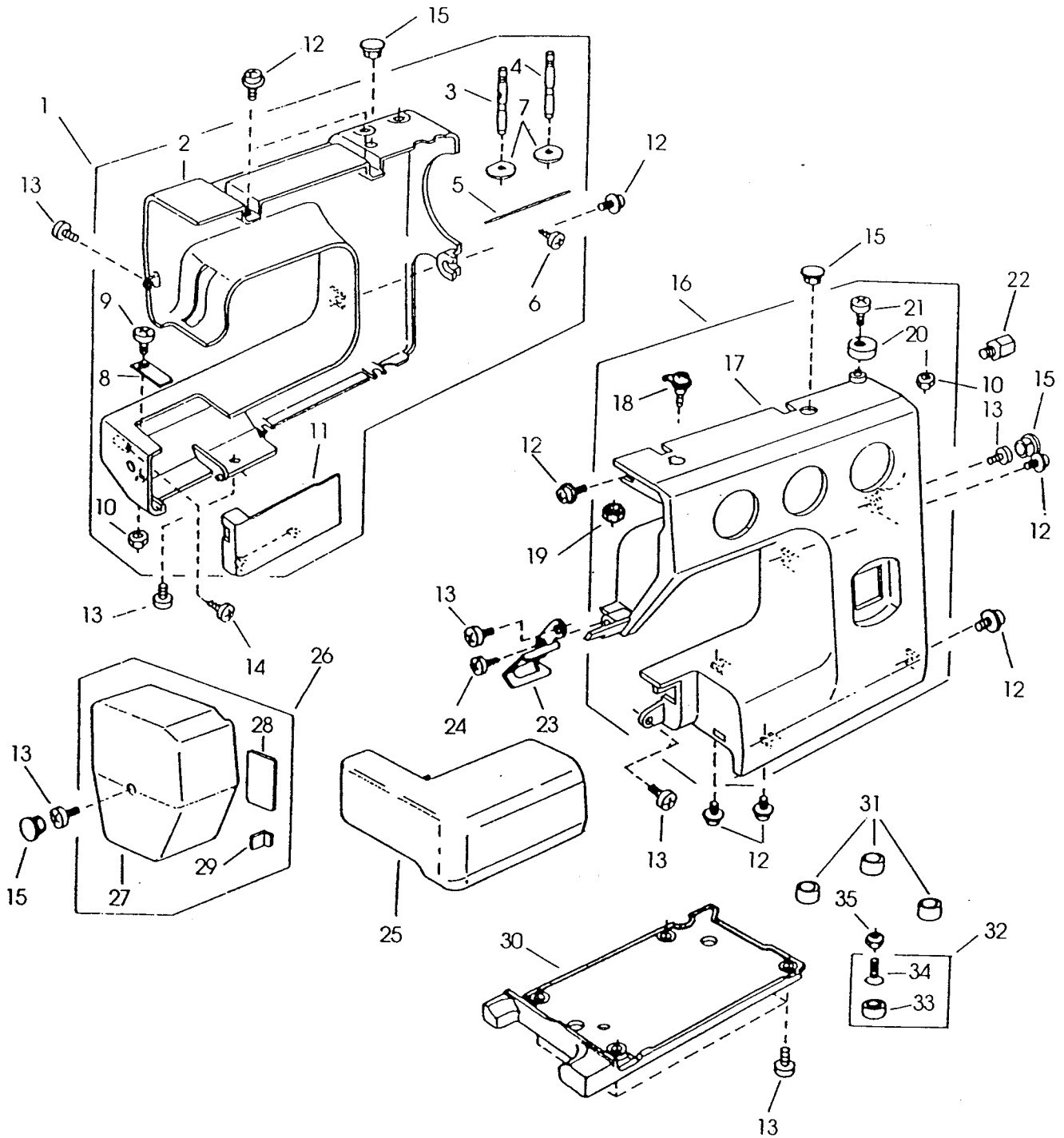
JF 1018

JF 1018S

JF 1022

**Janome
New Home**

Diagram 1



(NOTE: THE FRONT COVER SHOWN ABOVE IS THAT OF MODEL JF1022.)

Diagram 1 (con't.)

KEY NO.	PARTS NO.	DESCRIPTION	QUANTITY	
1	743601001	REAR COVER (UNIT) FOR ALL MODELS	1	
2	743003007	REAR COVER	1	
3	652302004	SPOOL PIN (LEFT)	1	
4	652205006	SPOOL PIN (RIGHT)	1	
5	736007009	SPOOL PIN SPRING	1	
6	000076317	T SET SCREW 3X10	1	
7	735013005	SPOOL PIN SPRING BASE	2	
8	730006000	SPRING	1	
9	000101404	SET SCREW 4X6	1	
10	000061205	NUT	2	
11	739004005	BED COVER PLATE	1	
12	000115205	TP SCREW 4X6	8	
13	000081005	SET SCREW 4X8	10	
14	000121905	TP SCREW 4X12B	1	
15	653006101	CAP	1	
16	743607007	FRONT COVER (UNIT) FOR JF1022	1	COMMON
	743605108	FRONT COVER (UNIT) FOR JF1018S	1	COMMON
	743607100	FRONT COVER (UNIT) FOR JF1018	1	COMMON
	743605407	FRONT COVER (UNIT) FOR JF1014	1	FOR JUK
	743605913	FRONT COVER (UNIT) FOR JF1012	1	COMMON
	743608008	FRONT COVER (UNIT) FOR JF1004	1	COMMON
17	743016117	FRONT COVER FOR JF1022	1	COMMON
	743016025	FRONT COVER FOR JF1018S	1	COMMON
	743016128	FRONT COVER FOR JF1018	1	COMMON
	743016058	FRONT COVER FOR JF1014	1	FOR JUK
	743016243	FRONT COVER FOR JF1012	1	COMMON
	743016210	FRONT COVER FOR JF1004	1	COMMON
18	730501011	THREAD GUIDE PLATE (UNIT)	1	
19	000160102	ADJUSTABLE LOCK NUT 4	1	
20	735016307	BOBBIN WINDER STOPPER	1	
21	000103107	SET SCREW 4X14	1	
22	741033000	COVER BASE SCREW	1	
23	740022003	THREAD GUIDE PLATE	1	
24	000107307	TP SCREW 3X8B	1	
25	743004008	EXTENSION TABLE	1	
26	743602301	FACE PLATE (UNIT) FOR ALL MODELS	1	COMMON
	743602208	FACE PLATE (UNIT) FOR JF1004	1	NH ONLY
27	743005009	FACE PLATE	1	
28	724025006	REFLEX STICKER	1	
29	822532008	THREAD CUTTER	1	
30	739005006	BASE PLATE	1	
31	739064003	RUBBER BASE	3	
32	735616107	RUBBER BASE (UNIT)	1	
33	735002001	RUBBER BASE	1	
34	000192000	SCREW	1	
35	000061319	NUT	1	

Diagram 2

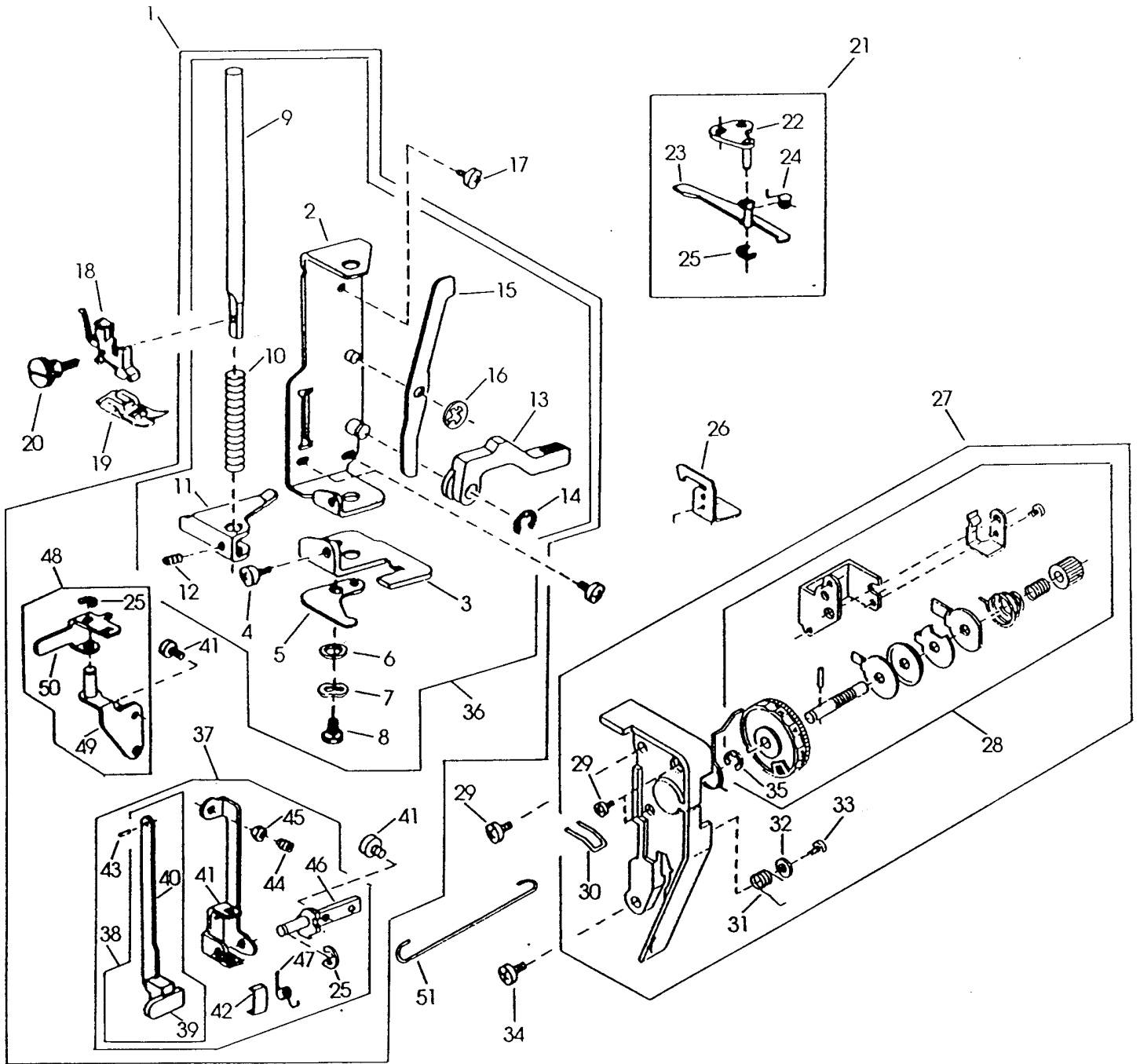


Diagram 2 (con't.)

KEY NO.	PARTS NO.	DESCRIPTION	QUANTITY
1	740620007	PRESSER BAR BASE PLATE (UNIT) FOR JF1018S ONLY	1
2	735023008	PRESSER BAR BASE PLATE	1
3	735024009	NEEDLE DROP ADJUSTING PLATE	1
4	000101404	SET SCREW 4X6	1
5	735025000	NEEDLE BAR SUPPORTER STOPPER	1
6	000070506	PLAIN WASHER	1
7	000116103	WAVE WASHER 4	1
8	000138307	BOLT 4X8	1
9	735026001	PRESSER BAR	1
10	735027002	PRESSER BAR SPRING	1
11	735028003	PRESSER BAR BRACKET	1
12	000111500	HEXAGON SOCKET SCREW 4X8	1
13	735029004	PRESSER FOOT LIFTER	1
14	000001609	SNAP RING E-5	1
15	735030008	TENSION RELEASE LEVER	1
16	000013903	SNAP RING CS-5	1
17	000081005	SET SCREW 4X8	3
18	611510000	PRESSER FOOT HOLDER	1
19	611511001	PRESSER FOOT (UNIT)	1
20	647112009	THUMB SCREW	1
21	739605002	TENSION RELEASE ARM (UNIT)	1
22	739017001	TENSION RELEASE ARM BASE	1
23	739018002	TENSION RELEASE ARM	1
24	739019003	TENSION RELEASE SPRING	1
25	000002105	SNAP RING E-3	1
26	739016000	TOP COVER THREAD GUIDE	1
27	743501000	TENSION ASSEMBLY	1
28	735506217	TENSION DIAL (UNIT)	1
29	000103808	SET SCREW 3X5	4
30	735040001	THREAD GUIDE	1
31	735041002	CHECK SPRING	1
32	652039007	WASHER	1
33	000107307	TAPPING SCREW 3X8B	1
34	000101703	SET SCREW 4X12	1
35	000002507	SNAP RING E-4	1
36	735604009	PRESSER BAR PLATE (UNIT) FOR ALL MODELS, EXCEPT JF1018S	1
37	740617001	BH LEVER (UNIT) FOR JF1018S ONLY	1
38	753629109	BH LEVER (UNIT) FOR JF1018S ONLY	1
39	753160107	BH KNOB FOR JF1018S ONLY	1
40	753161108	BH LEVER FOR JF1018S ONLY	1
41	740047004	BH LEVER SUPPORTER FOR JF1018S ONLY	1
42	753027008	FRICTION SPRING FOR JF1018S ONLY	1
43	000023009	SPRING PIN 1.6X4 FOR JF1018S ONLY	1
44	000113306	SET SCREW 4X10 FOR JF1018S ONLY	1
45	000160102	ADJUSTABLE LOCK NUT 4 FOR JF1018S ONLY	1
46	740048005	BH LEVER BASE PLATE FOR JF1018S ONLY	1
47	740049006	BH LEVER SPRING FOR JF1018S ONLY	1
48	740613007	BH LEVER BASE (UNIT) FOR JF1018S ONLY	1
49	740050000	BH LEVER BASE FOR JF1018S ONLY	1
50	740051001	BH REGULATING LEVER FOR JF1018S ONLY	1
51	740052002	BH SHIFTING ROD FOR JF1018S ONLY	1

Diagram 3

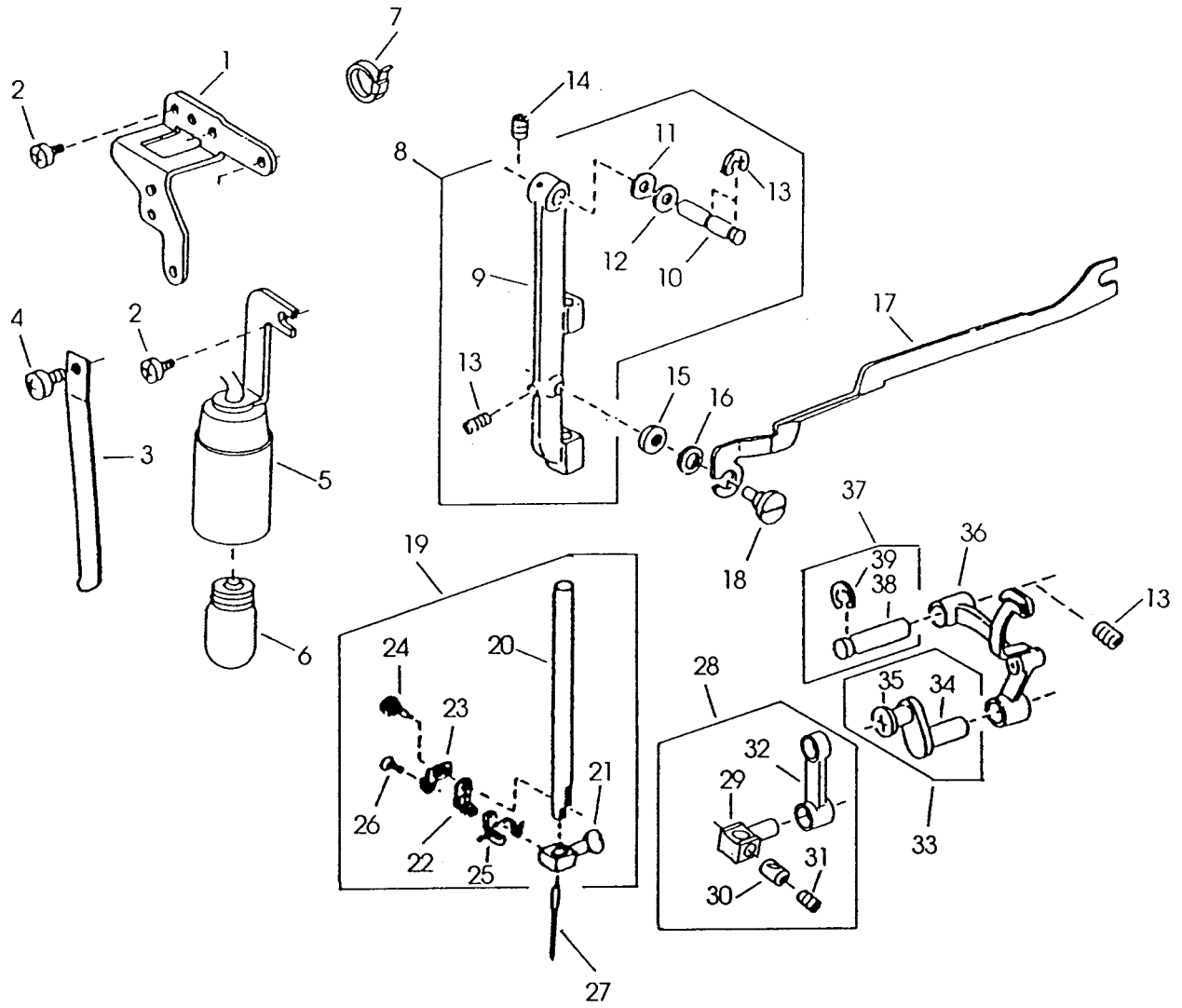


Diagram 3 (con't.)

KEY NO.	PARTS NO.	DESCRIPTION	QUANTITY	
1	740007013	FACE PLATE BASE PLATE	1	
2	000081005	SET SCREW 4X8	2	
3	730024004	NEEDLE BAR SUPPORTER SPRING	1	
4	000101404	SET SCREW 4X6	1	
5	737512005	LAMP SOCKET (240V)	1	COMMON
	647510207	LAMP SOCKET (120V) <i>BL1108</i>	1	FOR NH
6	000009102	LAMP (240V)	1	COMMON
	000009803	LAMP (120V) <i>BL1108</i>	1	FOR NH
7	000053008	CORD TIE BAND	2	
8	735605103	NEEDLE BAR SUPPORTER (UNIT)	1	
9	735032000	NEEDLE BAR SUPPORTER	1	
10	730022002	NEEDLE BAR SUPPORTER PIN	1	
11	673022002	SPRING WASHER	1	
12	000070609	PLAIN WASHER	1	
13	000002507	SNAP RING E-4	2	
14	000111304	HEXAGON SOCKET SCREW 5X5	3	
15	670258000	PLAIN WASHER	1	
16	678044005	PLAIN WASHER	1	
17	735119002	ZIGZAG ROD	1	
18	678084007	ECCENTRIC PIN	1	
19	730503116	NEEDLE BAR (UNIT)	1	
20	553085019	NEEDLE BAR	1	
21	801506008	NEEDLE CLAMP (UNIT)	1	
22	730025005	NEEDLE GUIDE PLATE	1	
23	732105006	NEEDLE CLAMP PLATE	1	
24	802108009	HINGE SCREW	1	
25	680043012	NEEDLE BAR THREAD GUIDE	1	
26	670047004	FLAT HEAD SCREW	1	
27	102408089	NEEDLE HA1-14	1	
28	680504005	NEEDLE BAR CONNECTING STUD (UNIT)	1	
29	670052002	NEEDLE BAR CONNECTING STUD	1	
30	670272000	NEEDLE BAR CONNECTING STUD PIN	1	
31	000111201	HEXAGON SOCKET SCREW 4X4	1	
32	680032007	NEEDLE BAR CRANK ROD	1	
33	735504008	NEEDLE BAR CRANK PIN (UNIT)	1	
34	735174005	NEEDLE BAR CRANK PIN	1	
35	647139002	NEEDLE BAR CRANK CAP	1	
36	625506109	THREAD TAKE-UP LEVER (UNIT)	1	
37	731511006	THREAD TAKE-UP LEVER PIN (UNIT)	1	
38	647040005	THREAD TAKE-UP LEVER PIN	1	
39	000002806	SNAP RING E-6	1	

Diagram 4

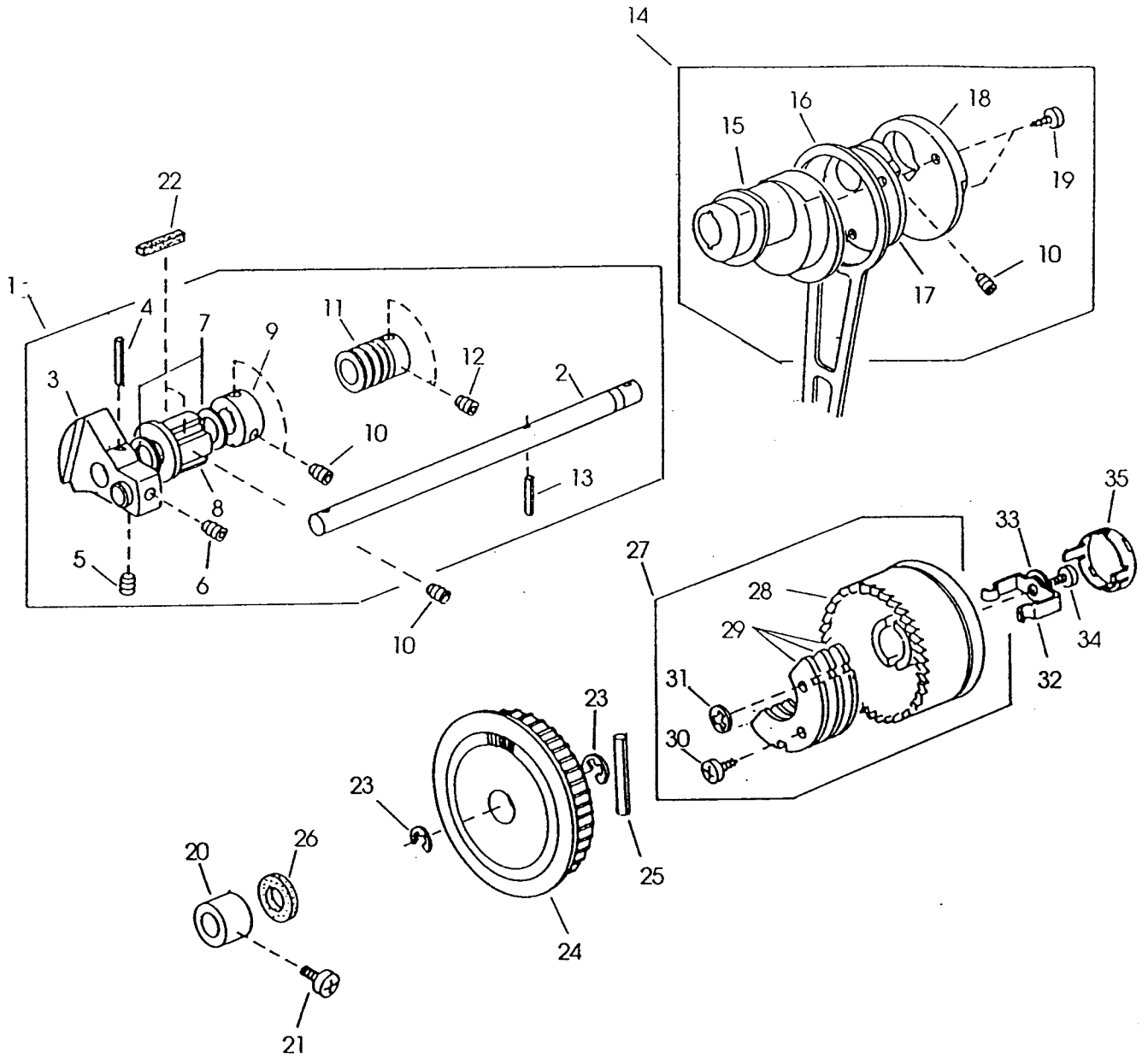
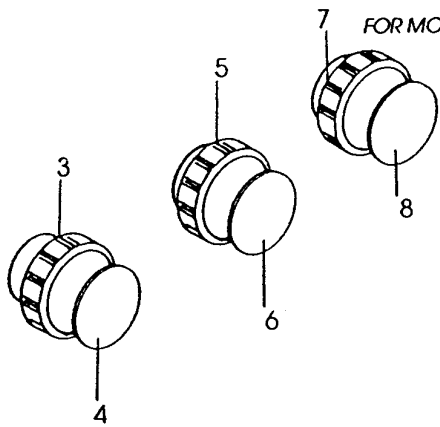
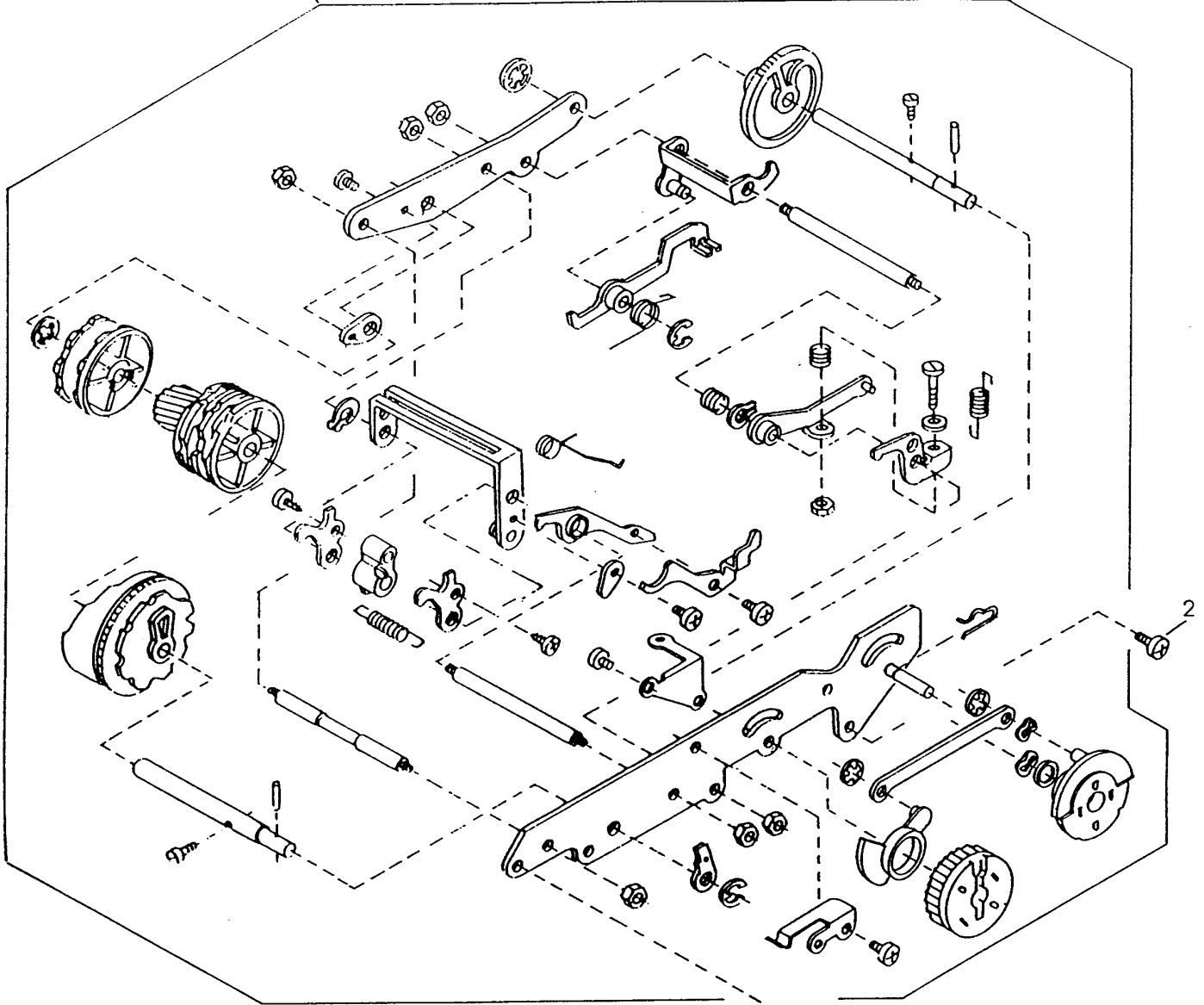


Diagram 4 (con't.)

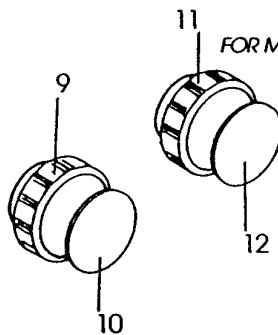
KEY NO.	PARTS NO.	DESCRIPTION	QUANTITY
1	743603106	UPPER SHAFT (UNIT)	1
2	743007001	UPPER SHAFT	1
3	743008002	TAKE-UP LEVER CRANK	1
4	000021708	SPRING PIN	1
5	102073003	SET SCREW	1
6	761052007	SET SCREW	1
7	000039307	THRUST WASHER FT-100	2
8	743009003	UPPER SHAFT FRONT BUSHING	1
9	639095000	RING	1
10	000111304	HEXAGON SOCKET SCREW 5X5	4
11	749011006	WORM GEAR	1
12	553245008	HEXAGON SOCKET SCREW 4X4	2
13	000003601	SPRING PIN	1
14	743604004	CRANK ROD (UNIT)	1
15	743010007	FEED CAM	1
16	743011008	CRANK ROD	1
17	639033000	CRANK CAM	1
18	639102012	CRANK CAM PLATE	1
19	000121400	TAPPING SCREW 3X14B	2
20	743002006	UPPER SHAFT REAR BUSHING	1
21	000172602	SET SCREW 5X8	1
22	731312005	FELT	2
23	000030205	SNAP RING E-8	2
24	743019006	BELT WHEEL	1
25	000023803	SPRING PIN	1
26	735143005	FELT	1
27	743606006	BALANCE WHEEL (UNIT)	1
28	639097024	BALANCE WHEEL	1
29	639116008	BALANCE WEIGHT	3
30	000160607	T SCREW 3X14B	1
31	000014306	SNAP RING CS-3	1
32	639113016	CLUTCH SPRING	1
33	000071013	PLAIN WASHER	1
34	810220003	SET SCREW	1
35	650070509	CLUTCH CAP	1

Diagram 5

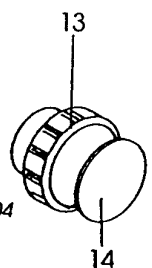
(NOTE: THIS DRAWING IS BASED THE ZIGZAG MECHANISM IN MODEL JF 1022.)



FOR MODELS JF 1022 AND JF1018



FOR MODELS JF1018S, JF1014 AND JF1012



FOR MODEL JF1004

Diagram 5 (con't.)

KEY NO.	PARTS NO.	DESPRIPRION	QUANTITY
1	743609009	ZIGZAG MECHANISM FOR JF1022	1 COMMON
	740614008	ZIGZAG MECHANISM FOR JF1018S	1 COMMON
	743609205	ZIGZAG MECHANISM FOR JF1018	1 COMMON
	740606007	ZIGZAG MECHANISM FOR JF1014	1 FOR JUK
	740606409	ZIGZAG MECHANISM FOR JF1012	1 FOR JA, DUBAI & OMAN
	740615009	ZIGZAG MECHANISM FOR JF1004	1 COMMON
2	000081005	SET SCREW	2 COMMON
3	743015002	SELECTOR DIAL (PATTERN) FOR JF1022 & JF1018	1 COMMON
4	740032305	PATTERN INDICATING PLATE FOR JF1022	1 COMMON
	743028101	PATTERN INDICATING PLATE FOR JF1022	1 FOR DUBAI & OMAN
	743026006	PATTERN INDICATING PLATE FOR JF1018	1 COMMON
	743022002	SELECTOR DIAL (STITCH LENGTH) FOR JF1022 & JF1018	1 COMMON
6	740019801	STITCH LENGTH INDICATING PLATE FOR JF1022	1 COMMON
	740019708	STITCH LENGTH INDICATING PLATE FOR JF1018	1 COMMON
7	743022002	SELECTOR DIAL (WIDTH) FOR JF1022 & JF1018	1 COMMON
8	743021001	WIDTH INDICATING PLATE FOR JF1022 & JF1018	1 COMMON
	743021104	WIDTH INDICATING PLATE FOR JF1022	1 FOR DUBAI & OMAN
9	743015002	SELECTOR DIAL (PATTERN) FOR JF1018S, JF1014 & JF1012	1 COMMON
10	743027007	PATTERN INDICATING PLATE FOR JF1018S	1 COMMON
	740095306	PATTERN INDICATING PLATE FOR JF1018S	1 FOR JA, DUBAI & OMAN
	743031004	PATTERN INDICATING PLATE FOR JF1014	1 FOR JUK
	743037000	PATTERN INDICATING PLATE FOR JF1012	1 COMMON
11	743015002	SELECTOR DIAL (STITCH LENGTH) FOR JF1018S, JF1014 & JF1012	1 COMMON
	740126307	STITCH LENGTH INDICATING PLATE FOR JF1018S	1 COMMON
12	740126400	STITCH LENGTH INDICATING PLATE FOR JF1018S	1 FOR JA, DUBAI & OMAN
	740019801	STITCH LENGTH INDICATING PLATE FOR JF1014	1 FOR JUK
	740019801	STITCH LENGTH INDICATING PLATE FOR JF1012	1 COMMON
	740019801	STITCH LENGTH INDICATING PLATE FOR JF1012	1 FOR JA, DUBAI & OMAN
	740019801	STITCH LENGTH INDICATING PLATE FOR JF1012	1 FOR JA, DUBAI & OMAN
13	743015002	SELECTOR DIAL FOR JF1004	1 COMMON
14	743020000	PATTERN INDICATING PLATE FOR JF1004	1 COMMON

Diagram 6

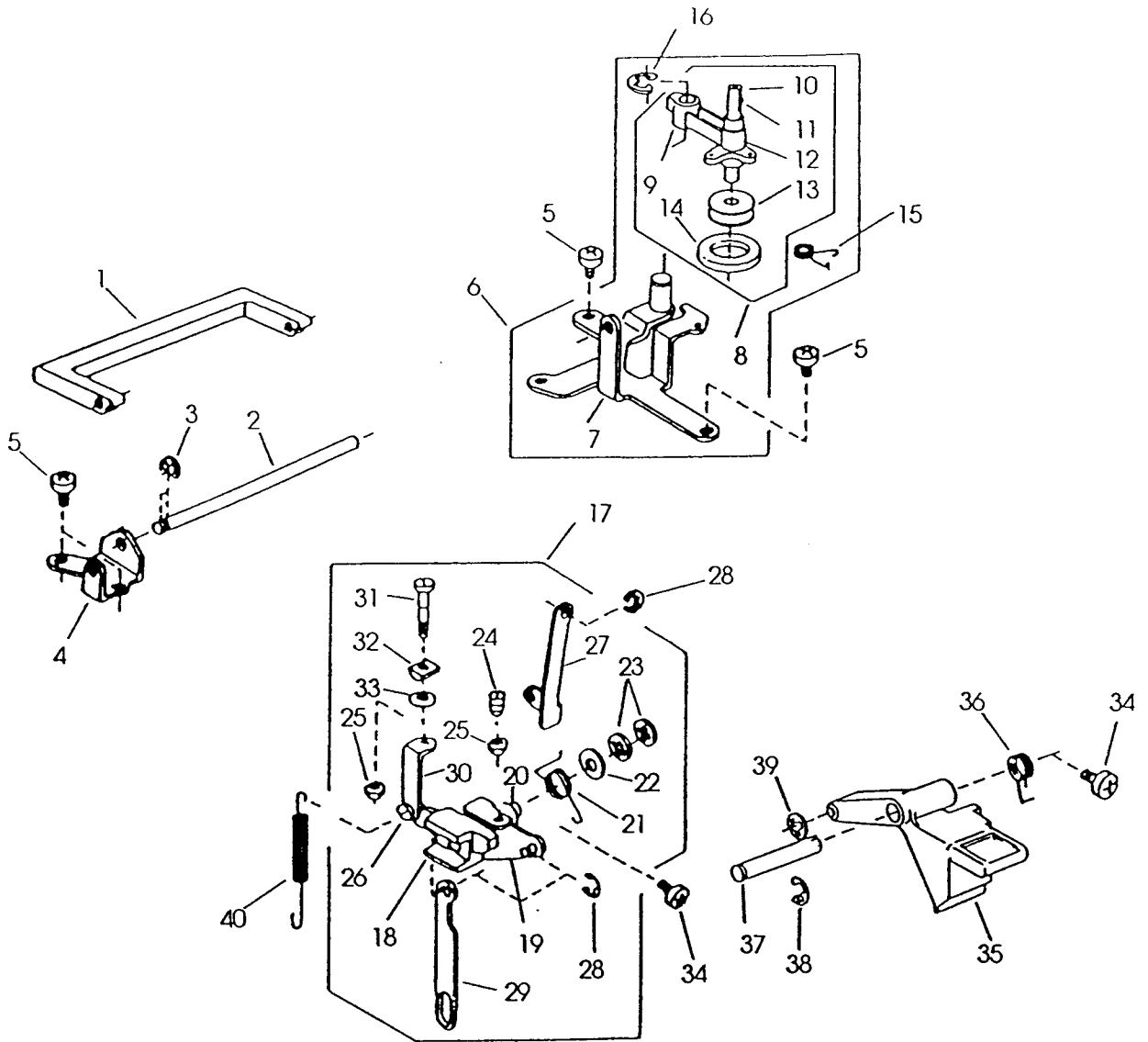


Diagram 6 (con't.)

KEY NO.	PARTS NO.	DESCRIPTION	QUANTITY	
1	735017205	HANDLE	1	
2	740011009	HANDLE SHAFT	1	
3	000002105	SNAP RING E-3	2	
4	740010008	HANDLE HINGE SHAFT BASE	1	
5	000081005	SET SCREW 4X8	4	
6	740602209	BOBBIN WINDER BASE PLATE (UNIT)	1	
7	740003101	BOBBIN WINDER BASE PLATE	1	
8	735501005	BOBBIN WINDER ARM (UNIT)	1	
9	735014006	BOBBIN WINDER ARM	1	
10	735129005	BOBBIN WINDER SHAFT	1	
11	670026007	BOBBIN WINDER SHAFT SPRING	1	
12	652092008	BOBBIN WINDER SHAFT RING	1	
13	647017003	BOBBIN WINDER RING BASE	1	
14	647018004	BOBBIN WINDER RING	1	
15	740042009	BOBBIN WINDER ARM SPRING	1	
16	000002806	SNAP RING E-6	1	
17	736604105	FEED REGULATOR (UNIT)	1	
		FOR ALL MODELS, EXCEPT JF1004		
	736607016	FEED REGULATOR FOR JF1004	1	FOR NH
18	647049004	FEED REGULATOR FOR ALL MODELS	1	COMMON
19	736012007	FEED REGULATOR PLATE	1	
20	601024001	PIN	1	
21	735077007	FEED REGULATOR SPRING	1	
22	735073003	PLAIN WASHER	1	
23	000014605	SNAP RING CS-6	2	
24	648010009	SET SCREW	1	
25	000160102	ADJUSTABLE LOCK NUT 4	1	
26	648012001	SET SCREW	1	
27	739020007	FEED REGULATOR ROD	1	
28	000002105	SNAP RING E-3	3	
29	730045001	REVERSE LINK	1	
30	734039004	S. S ROD FOR ALL MODELS, EXCEPT JF1004	1	
31	735074004	S. S ADJUSTABLE SCREW	1	
		FOR ALL MODELS, EXCEPT JF1004		
32	735076006	S. S ROD BLOCK	1	
		FOR ALL MODELS, EXCEPT JF1004		
33	000071013	WASHER 4 FOR ALL MODELS, EXCEPT JF1004	1	
34	000172602	SET SCREW 5X8	2	
35	743014001	R BUTTON	1	
36	739063002	R BUTTON SPRING	1	
37	736015000	R BUTTON SHAFT	1	
38	000001609	SNAP RING E-5	1	
39	000014007	SNAP RING CS-4	1	
40	670100006	FEED REGULATOR SPRING	1	
		FOR ALL MODELS, EXCEPT JF1018S		
	740125007	FEED REGULATOR SPRING FOR JF1018S	1	

Diagram 7

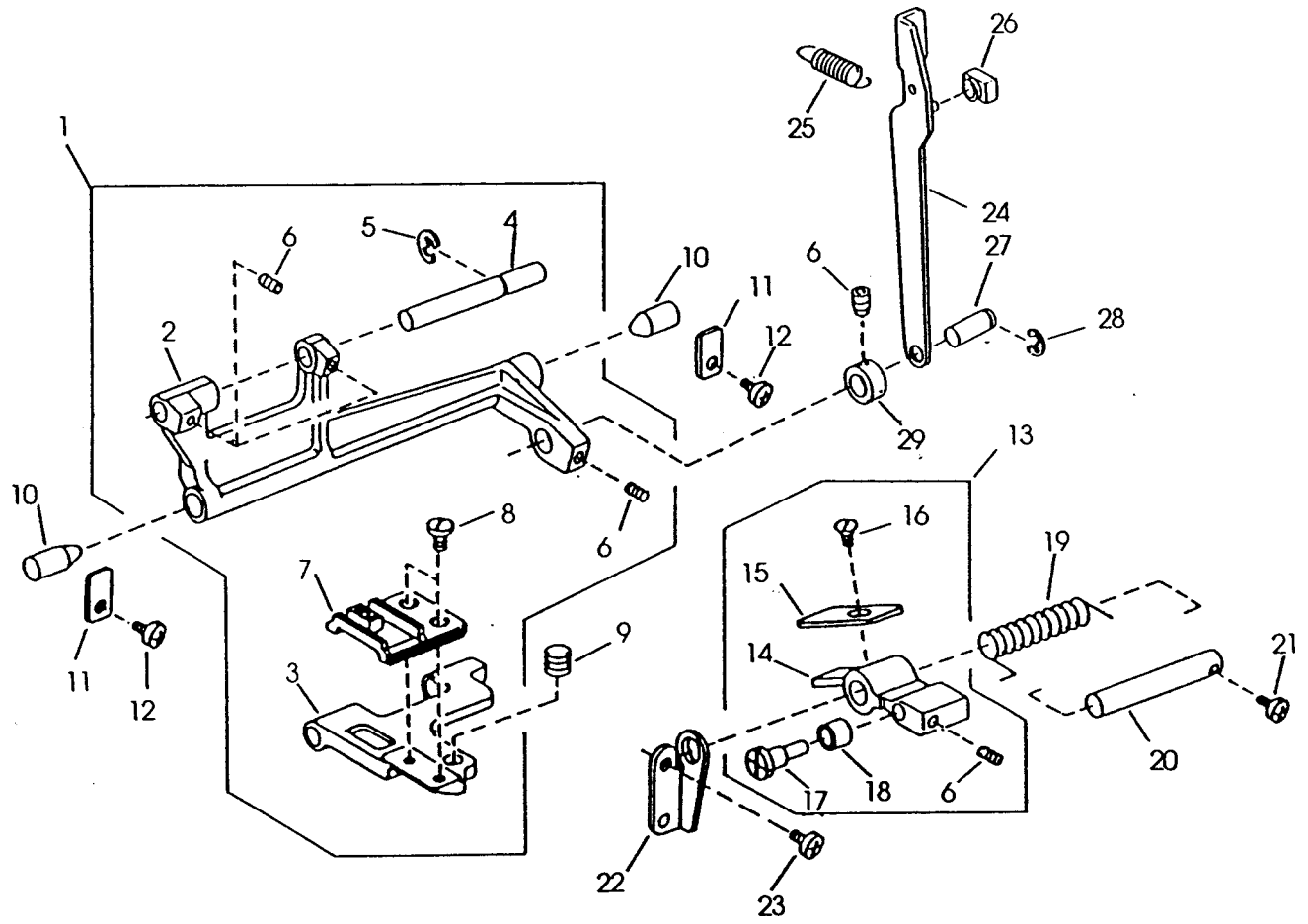


Diagram 7 (con't.)

KEY NO.	PARTS NO.	DESCRIPTION	QUANTITY
1	735612000	FEED ROCK SHAFT (UNIT)	1
2	735078008	FEED ROCK SHAFT	1
3	735079009	FEED BAR	1
4	735080003	FEED BAR SHAFT	1
5	000002507	SNAP RING E-4	1
6	000111201	HEXAGON SOCKET SCREW	4
7	735081004	FEED DOG	1
8	735082005	SET SCREW	1
9	735083006	FEED BAR SPRING	1
10	735084007	FEED ROCK SHAFT CENTER	2
11	735085008	FEED ROCK SHAFT CENTER PLATE	1
12	000101404	SET SCREW 4X6	2
13	735613001	FEED LIFTING ARM (UNIT)	1
14	735086009	FEED LIFTING ARM	1
15	605030002	SLIDING PLATE	1
16	365032001	SET SCREW	1
17	735087000	FEED LIFTING PIN	1
18	735088001	FEED LIFTING ROLLER	1
19	735089002	FEED LIFTING SPRING	1
20	735090006	FEED LIFTING SHAFT	1
21	000097200	SET SCREW 4X12	1
22	739022009	FEED LIFTING SHAFT HOLDER	1
23	000081119	SET SCREW 4X6	1
24	743012009	FEED ROD	1
25	743013000	FEED ROD SPRING	1
26	102141003	FEED REGULATOR SLIDE BLOCK	1
27	735071001	FEED ROCK SHAFT CONNECTING PIN	1
28	000002806	SNAP RING E-6	1
29	735276008	RING	1

Diagram 8

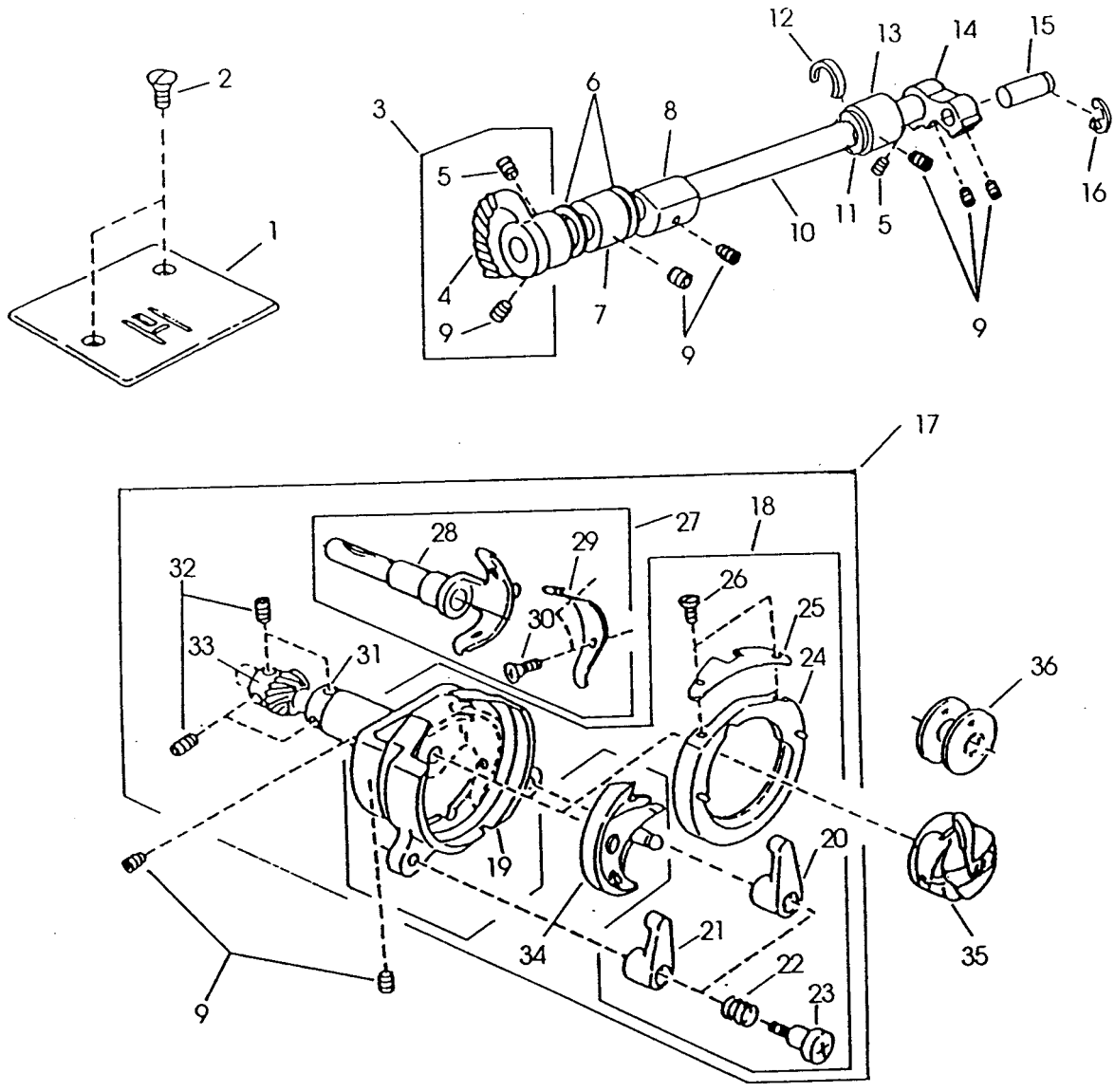


Diagram 8 (con't.)

KEY NO.	PARTS NO.	DESCRIPTION	QUANTITY
1	739008009	NEEDLE PLATE	1
2	681009101	SET SCREW	2
3	735950003	LOWER SHAFT GEAR (UNIT)	1
4	735951004	LOWER SHAFT GEAR	1
5	000110107	HEXAGON SOCKET SCREW 5X5WP	2
6	000036201	THRUST WASHER FT-80	2
7	735233003	BUSHING	1
8	735061008	FEED LIFTING CAM	1
9	000111304	HEXAGON SOCKET SCREW 5X5	8
10	735236006	LOWER SHAFT	1
11	822070003	FELT	1
12	735239009	FELT HOLDER	1
13	735234004	BUSHING	1
14	639036003	LOWER SHAFT CRANK ARM	1
15	639037004	PIN	1
16	000002507	SNAP RING E-4	1
17	735610101	SHUTTLE BODY (UNIT)	1
18	735508002	SHUTTLE RACE BODY (UNIT)	1
19	735065002	SHUTTLE RACE BODY	1
20	605065006	SHUTTLE RACE RING CLASP (RIGHT)	1
21	605066007	SHUTTLE RACE RING CLASP (LEFT)	1
22	532184003	SHUTTLE RACE RING CLASP SPRING	1
23	673290003	HINGE SCREW	2
24	553168006	SHUTTLE RACE RING	1
25	601801000	SHUTTLE RACE SPRING	1
26	102100000	SET SCREW	2
27	735509003	DRIVER BODY (UNIT)	1
28	735066003	DRIVER BODY	1
29	670286007	DRIVER SPRING	1
30	102202003	SET SCREW	2
31	735067004	RING	1
32	553245008	HEXAGON SOCKET SCREW	4
33	735068108	SHUTTLE RACE BODY SHAFT GEAR	1
34	532096007	SHUTTLE HOOK	1
35	647515006	BOBBIN CASE	1
36	102261000	BOBBIN	1

Diagram 9

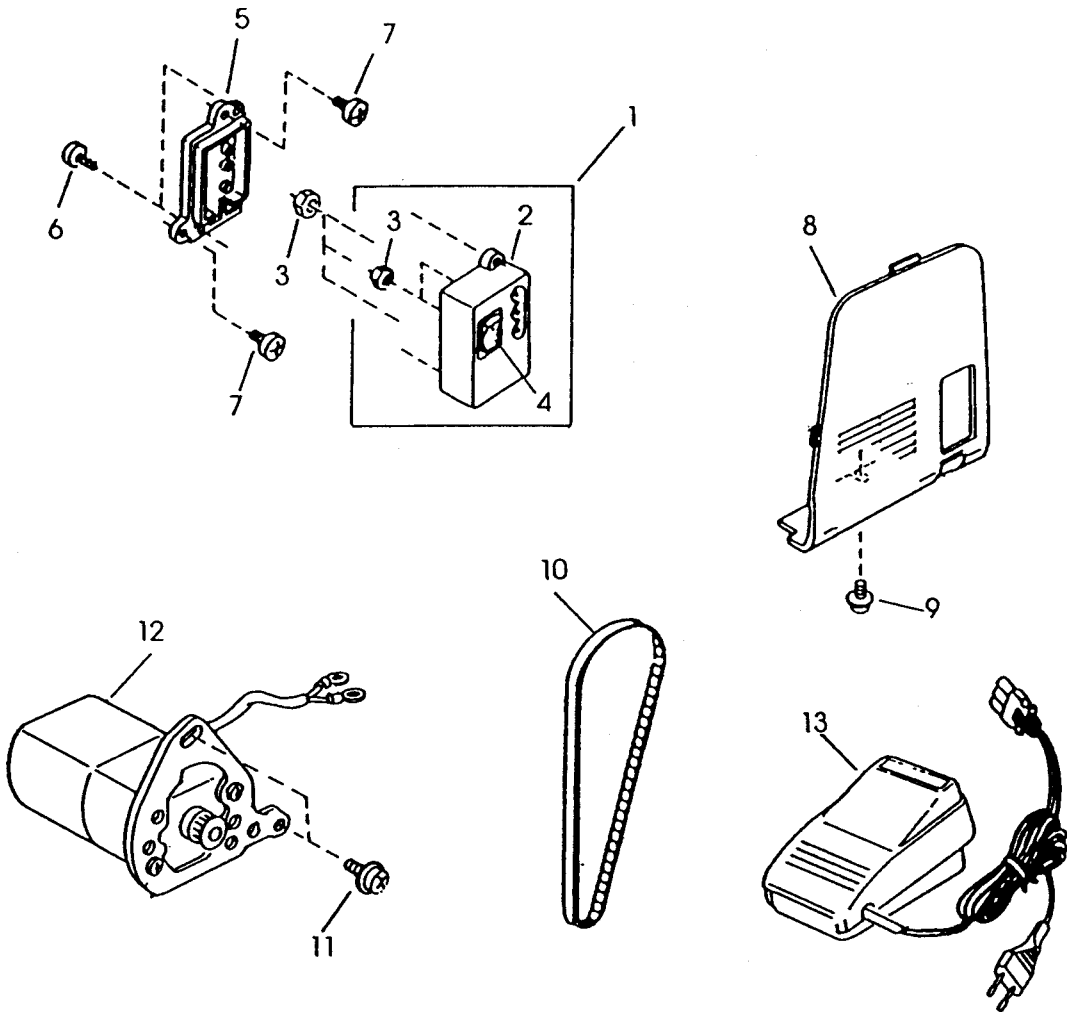


Diagram 9 (con't.)

KEY NO.	PARTS NO.	DESCRIPTION	QUANTITY	
1	739503009	MACHINE SOCKET (UNIT) FOR 240V	1	COMMON
	739505001	MACHINE SOCKET (UNIT) FOR 120V <i>BL1108</i>	1	NH ONLY
2	739036006	MACHINE SOCKET FOR 240V	1	COMMON
	739036006	MACHINE SOCKET FOR 120V <i>BL1108</i>	1	NH ONLY
3	000060802	NUT 3-1-5.5	5	
4	653528001	SWITCH FOR 240V	1	COMMON
	830334003	SWITCH FOR 120V <i>BL1108</i>	1	
5	739037007	MACHINE SOCKET COVER	1	
6	000107802	T SCREW 3X10	2	
7	000103509	SET SCREW 4X10	2	
8	743017004	BELT COVER	1	
9	000115205	TP SCREW 4X6	1	
10	650166008	TIMING BELT	1	
11	000115504	TP SCREW 5X10	2	
12	024070108	MOTOR (UNIT)	1	COMMON
	024070201	MOTOR (UNIT)	1	FOR JA & JUK
	024070304	MOTOR (UNIT)	1	FOR DUBAI & OMAN
	014170108	MOTOR (UNIT) <i>BL1108</i>	1	FOR NH
13	042870205	FOOT CONTROLLER (UNIT)	1	COMMON
	042870102	FOOT CONTROLLER (UNIT)	1	FOR JA
	042870401	FOOT CONTROLLER (UNIT)	1	FOR JUK
	033870104	FOOT CONTROLLER (UNIT) (TJC-150) <i>BL1108</i>	1	FOR NH