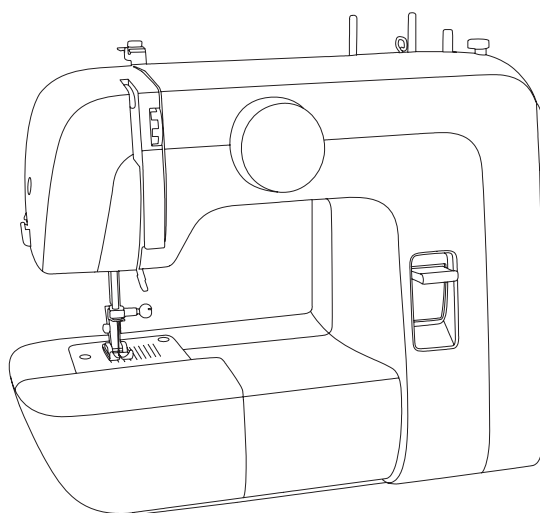


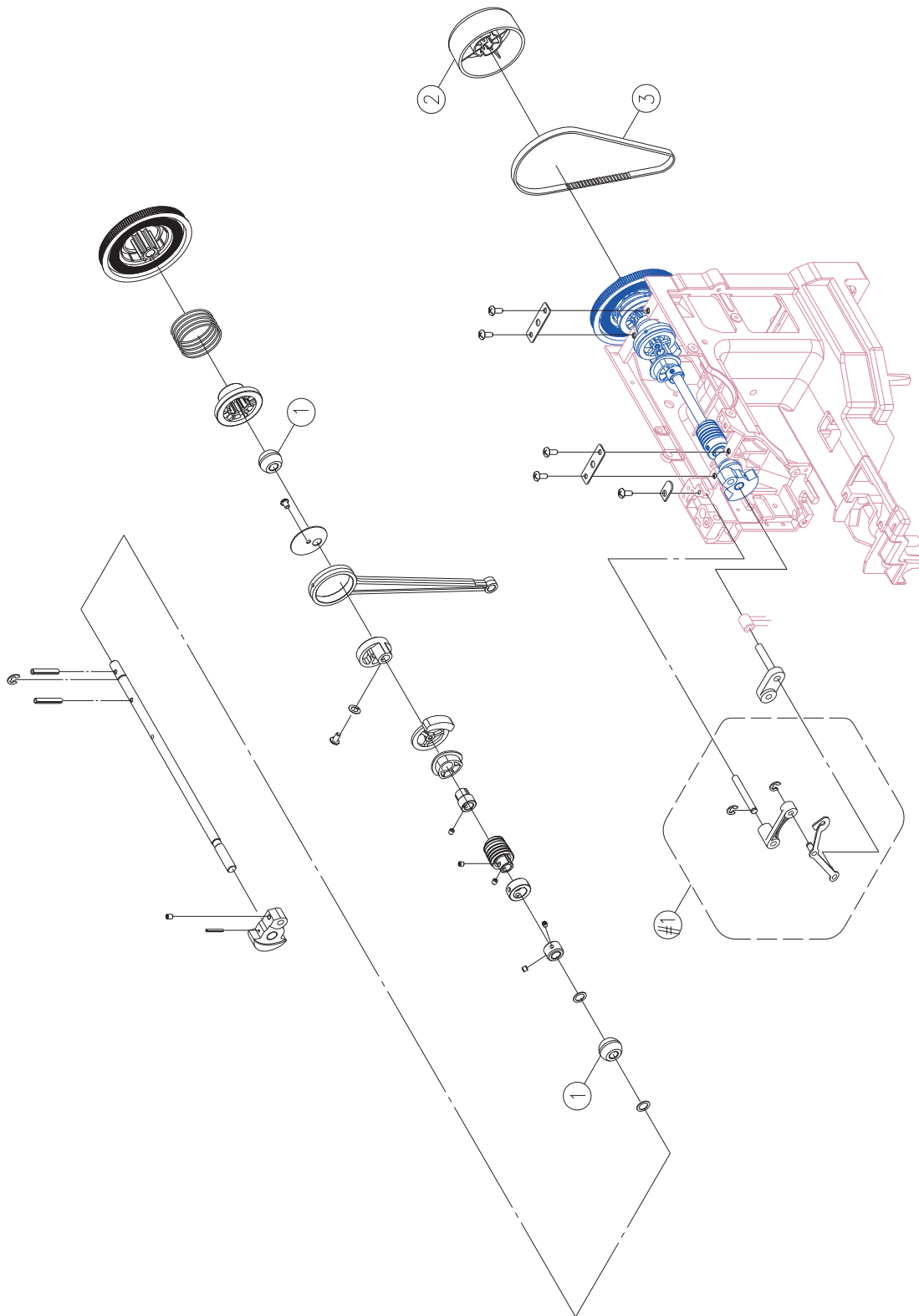


1304
1306



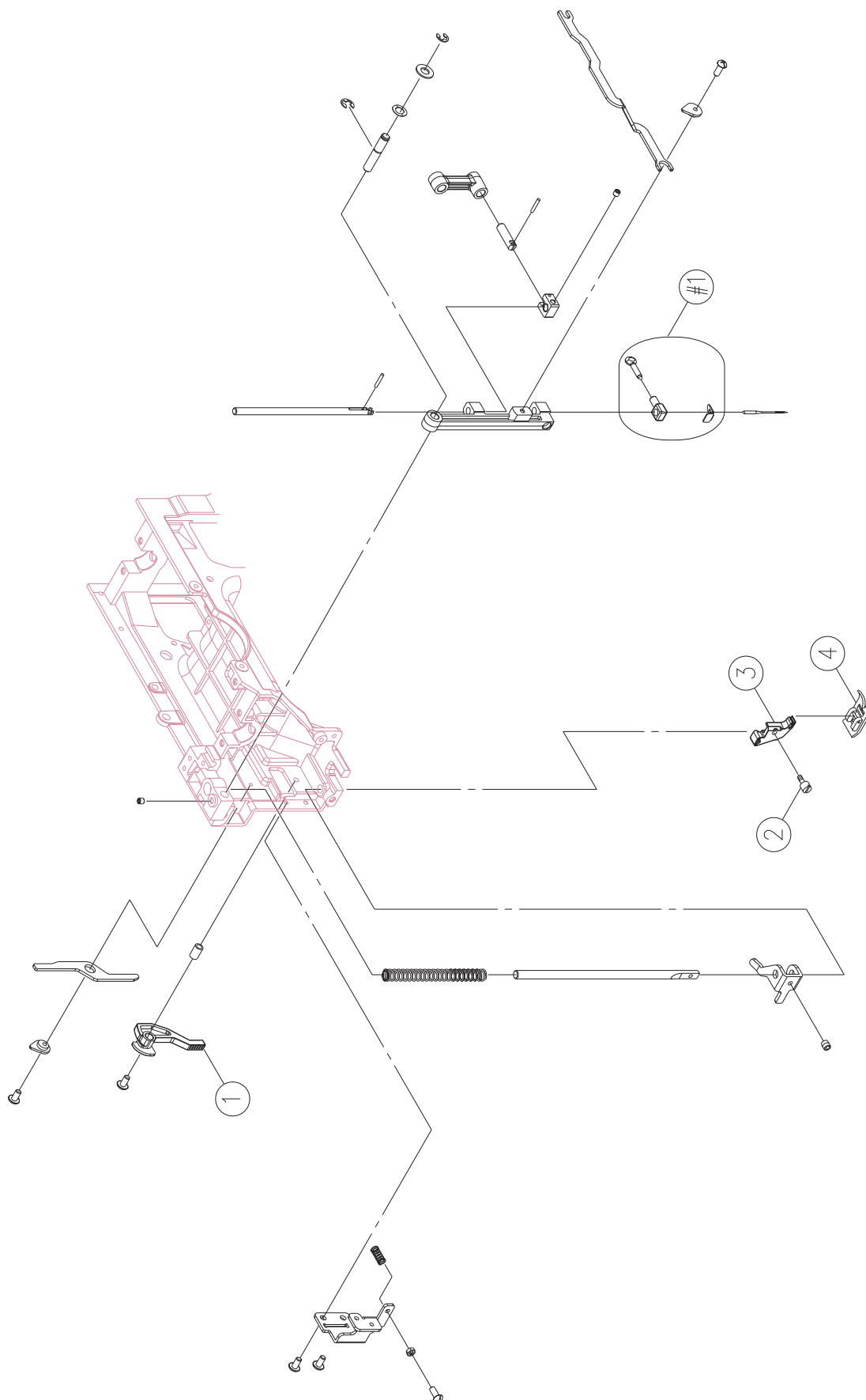
Liste de pièces Lista de Piezas Parts List

A



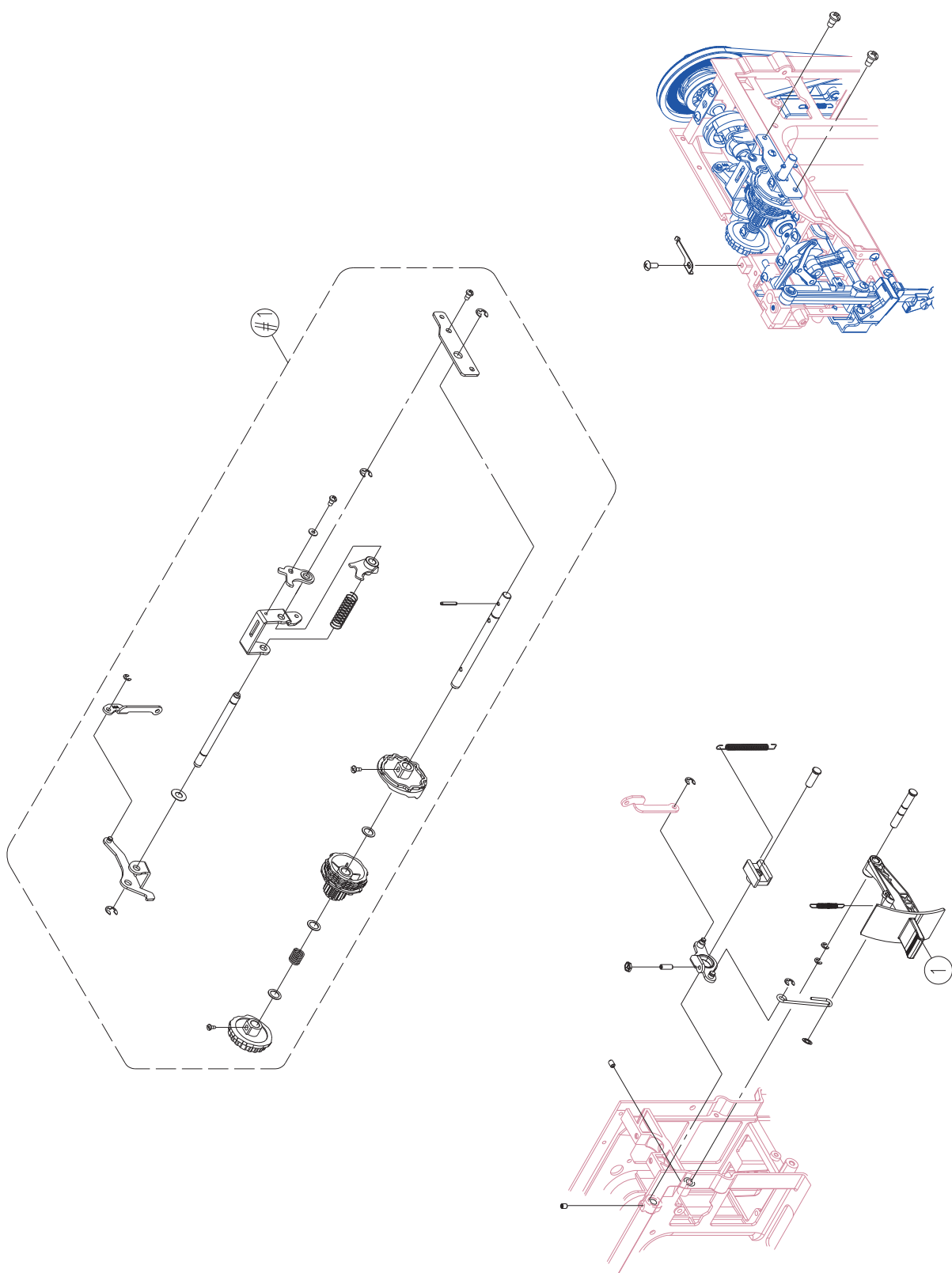
| <u>No.</u> | <u>Part No.</u> | <u>Description</u> |
|------------|-----------------|-------------------------------|
| 1 | 68001128 | ARM SHAFT BUSING |
| 2 | 68001133 | HAND WHEEL |
| 3 | 68001130 | MOTOR DRIVE BELT (250×500×5) |
| #1 | 68001134 | THREAD TAKE UP LEVER COMPLETE |

B



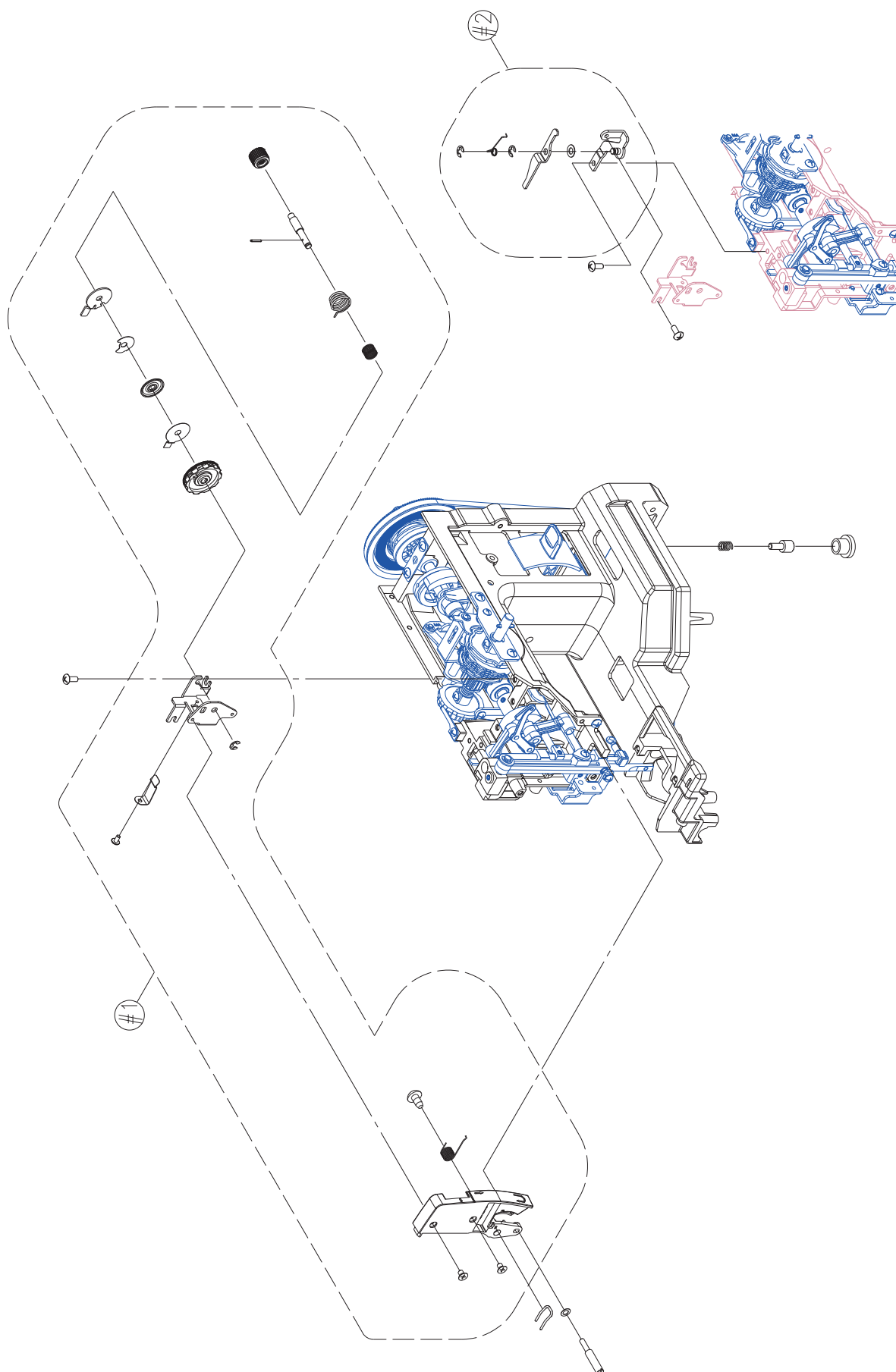
| <u>No.</u> | <u>Part No.</u> | <u>Description</u> |
|------------|-----------------|--------------------------|
| 1 | 68001135 | PRESSER BAR LIFTER LEVER |
| 2 | 416118401 | SHANK SCREW (9/64×40×8) |
| 3 | 416495501 | SHANK COMPLETE |
| 4 | 416128401 | ALL PURPOSE FOOT |
| #1 | 68003221 | NEEDLE CLAMP COMPLETE |

C

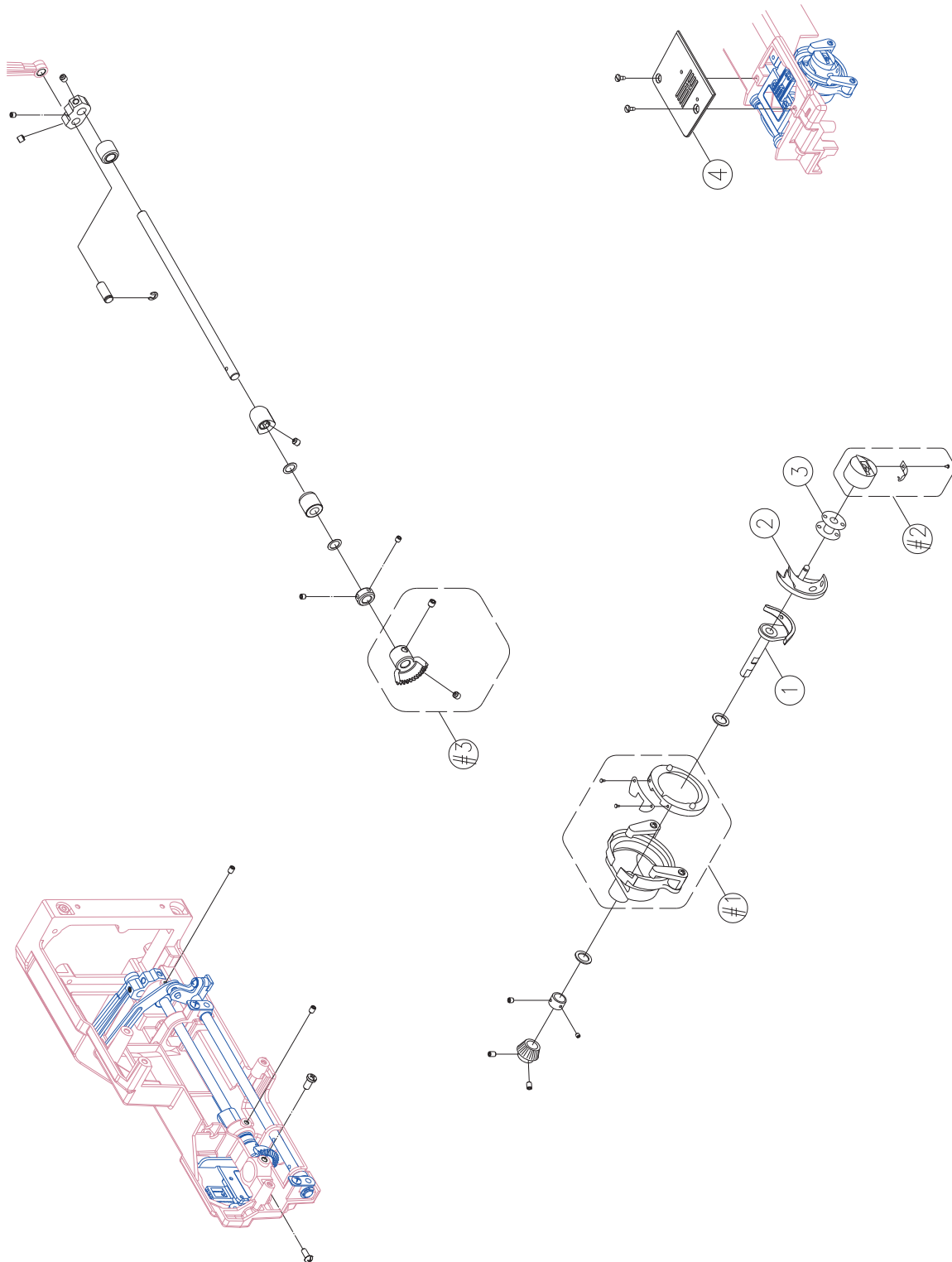




| <u>No.</u> | <u>Part No.</u> | <u>Description</u> |
|------------|-----------------|----------------------|
| 1 | 68001139 | REVERSE LEVER BUTTON |
| #1 | 68001140 | PATTERN CAM CONTACT |

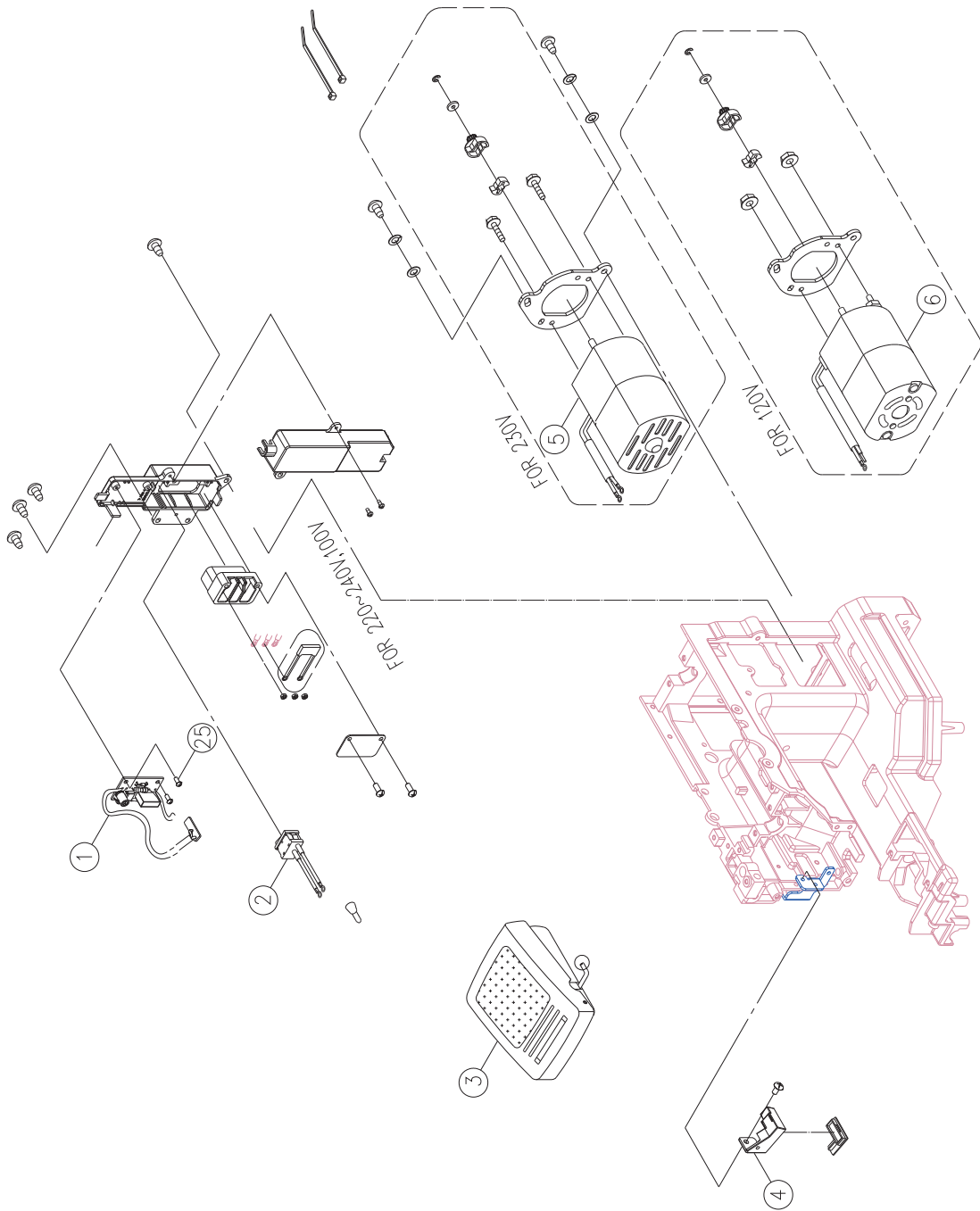
D



| <u>No.</u> | <u>Part No.</u> | <u>Description</u> |
|------------|-----------------|---------------------------------------|
| #1 | 68001141 | DIAL TENSION SUPPORTER PLATE COMPLETE |
| #2 | 68001142 | MOVEMENT PLATE SUPPORTER |



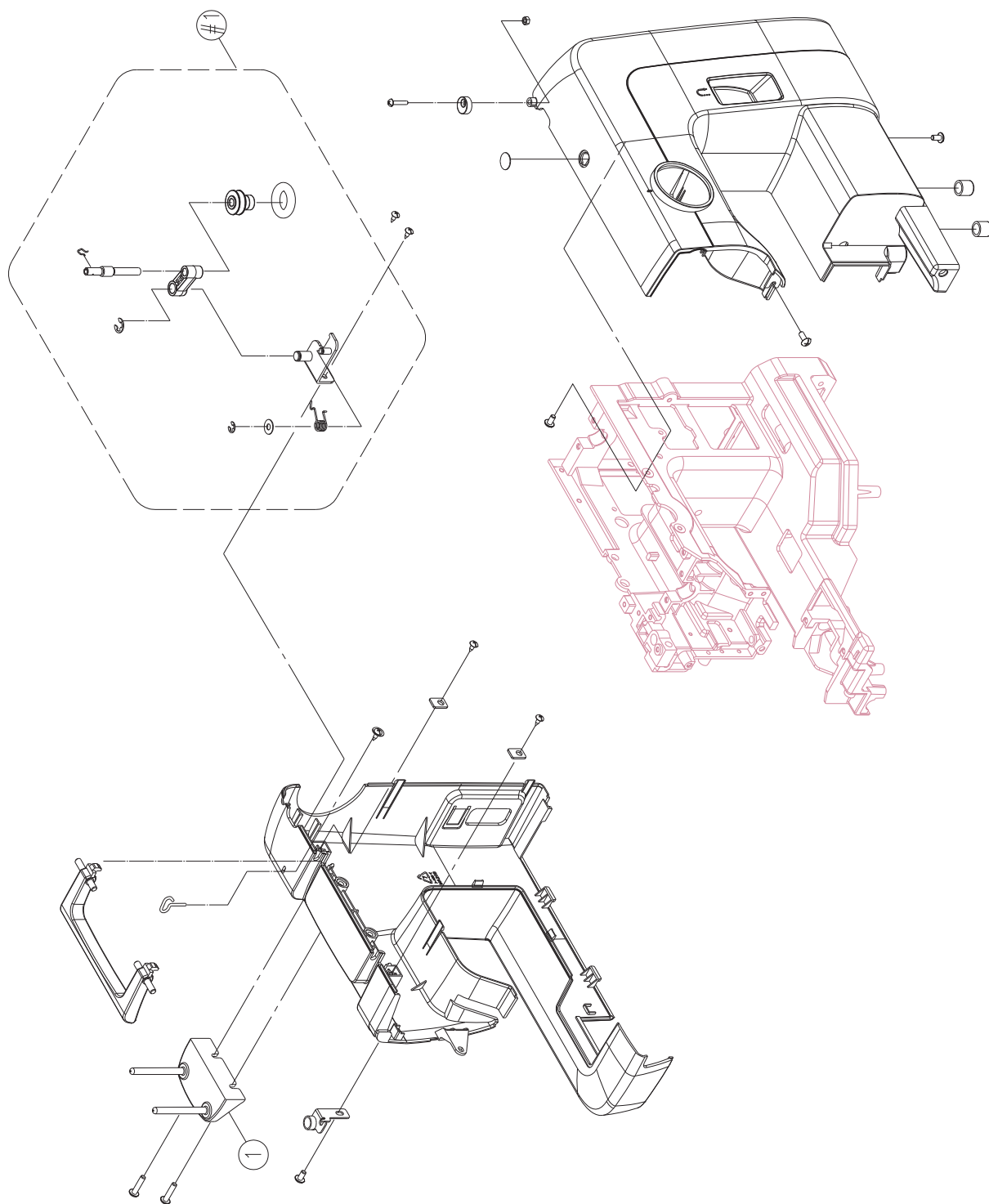
| No. | Part No. | Description |
|-----|--|--|
| 1 | 68000174 | SHUTTLE DRIVER COMPLETE |
| 2 | 416392101 | SHUTTLE HOOK |
| 3 | 68000175  | BOBBIN |
| 4 | 416171501 | NEEDLE PLATE  |
| #1 | 68000176 | OPEN SHUTTLE RACE COMPLETE |
| #2 | 416153401 | BOBBIN CASE COMPLETE |
| #3 | 416245801 | LOWER SHAFT GEAR COMPLETE |



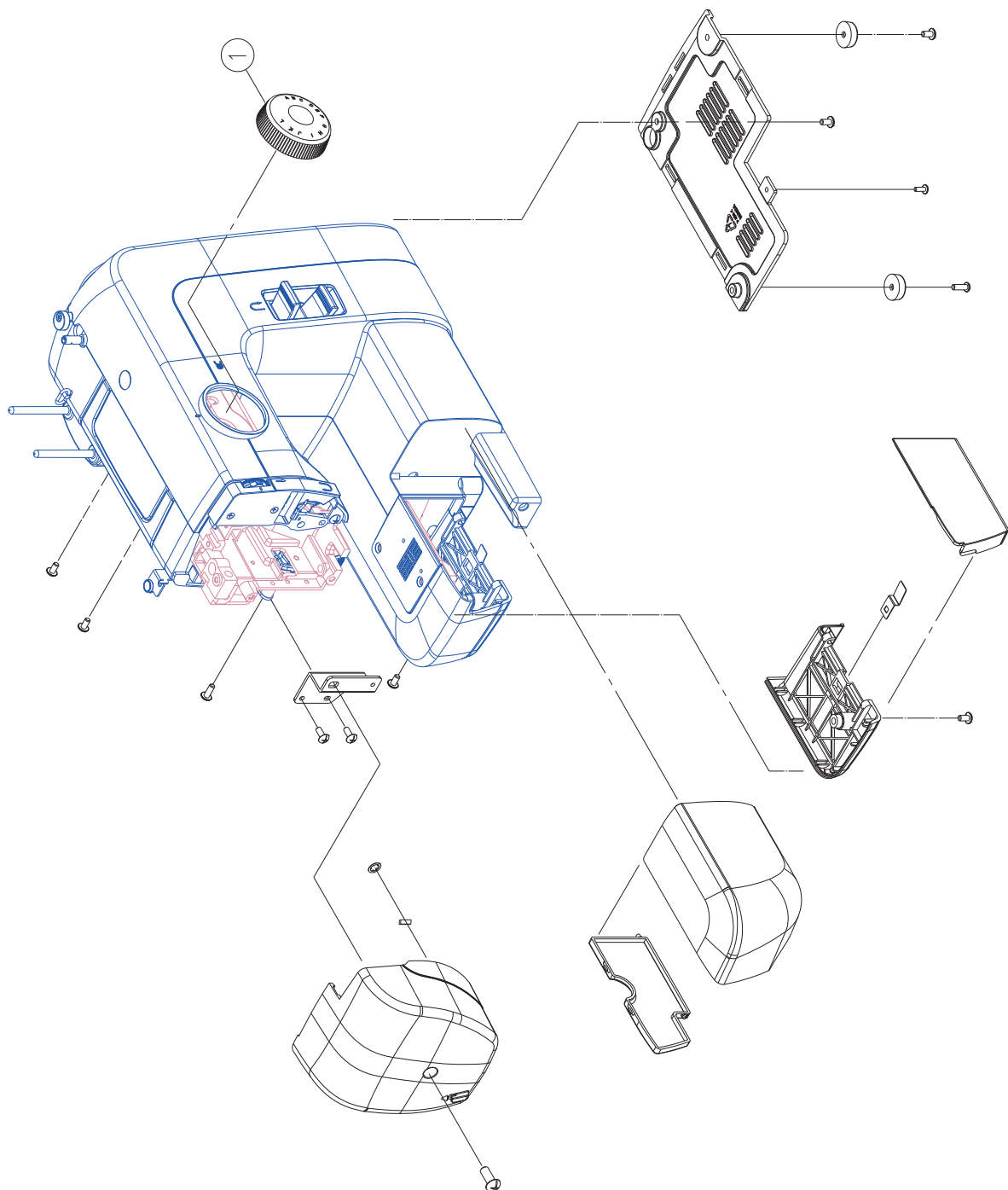
| <u>No.</u> | <u>Part No.</u> | <u>Description</u> |
|------------|-----------------|-------------------------------|
| 1 | 68001145 | SWITCH RECEPTACLE ASSY (230V) |
| 2 | 416521701 | SWITCH ASS' Y |
| 3 | 68001147 | FOOT CONTROLLER (230V) |
| 4 | 68001146 | LED HOLDER |
| 5 | 68001144 | MOTOR (FOR 230V) |
| 6 | 68001143 | MOTOR (FOR 120V) |



G

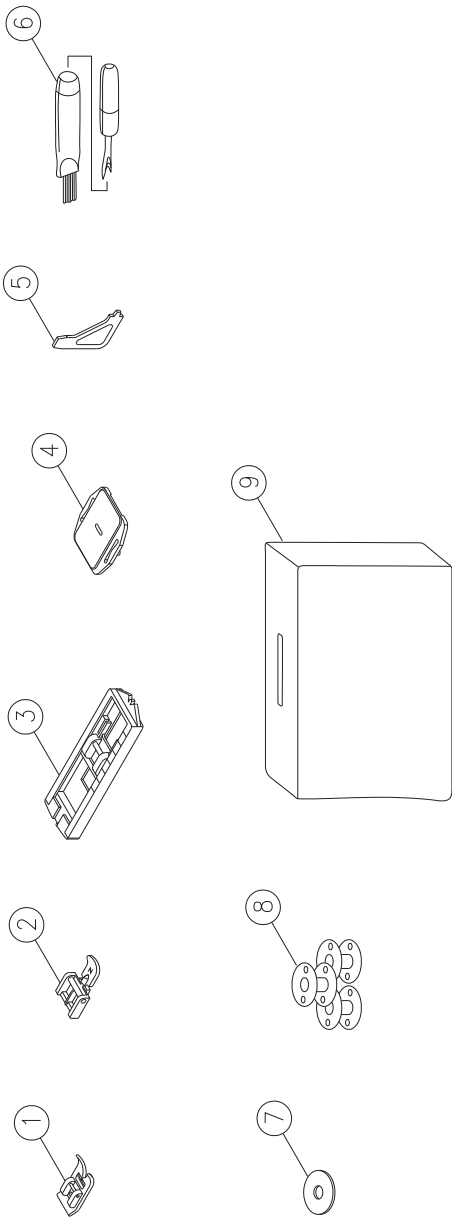


| <u>No.</u> | <u>Part No.</u> | <u>Description</u> |
|------------|-----------------|------------------------|
| 1 | 416515001 | SPOOL PIN PLATE |
| #1 | 68001148 | BOOBIN WINDER COMPLETE |



| <u>No.</u> | <u>Part No.</u> | <u>Description</u> |
|------------|-----------------|----------------------------------|
| 1 | 68001149 | PATTERN SELECTOR DIAL (FOR 1304) |
| | 68001150 | PATTERN SELECTOR DIAL (FOR 1306) |

STANDARD ACCESSORIES



| <u>No.</u> | <u>Part No.</u> | <u>Description</u> |
|------------|-----------------|---------------------|
| 1 | 416128401 | ALL PURPOSE FOOT |
| 2 | 416128701 | ZIPPER FOOT (I) |
| 3 | 416128901 | BUTTONHOLE FOOT (B) |
| 4 | 416127901 | FELT PAD |
| 5 | 68000177 | L-SCREWDRIVER |
| 6 | 416127701 | SEAM RIPPER/ BRUSH |
| 7 | 416127301 | SPOOL PIN FELT |
| 8 | 68000175 | BOBBIN |
| 9 | 68001151 | SOFT COVER |