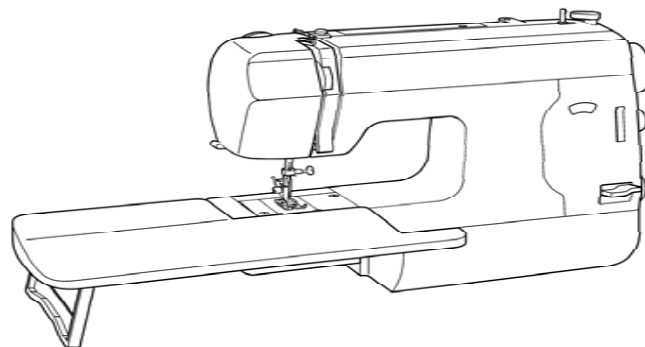


REFER TO IMPORTANT NOTICE BELOW

**PARTS LIST
FOR
Model 140Q**

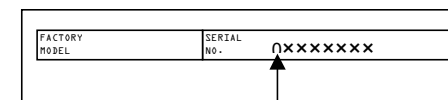


SINGER

IMPORTANT:

WHEN ORDERING THE PARTS
ALWAYS CHECK THE SERIAL
NUMBER OF THE MACHINE.

FIRST DIGIT OF THE SERIAL
NUMBER MUST MATCH WITH
THE LAST DIGIT OF THE FACTORY
MODEL ABOVE.



FIRST DIGIT

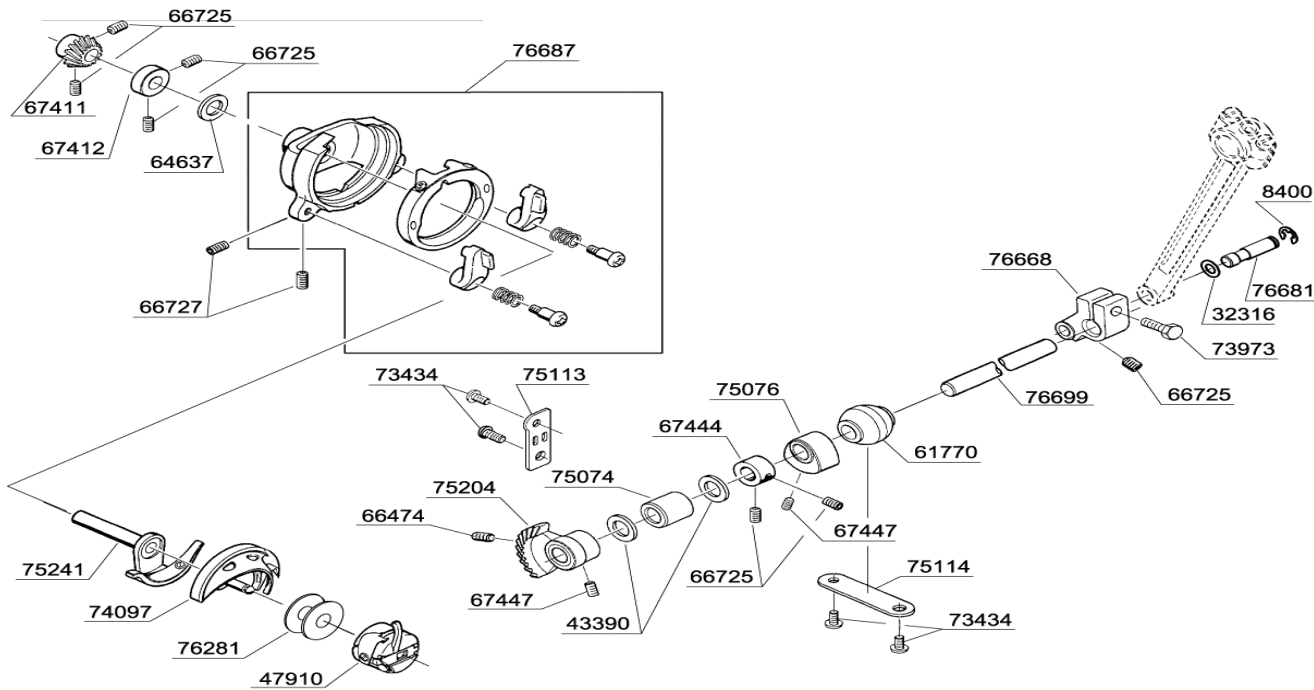
BUYER'S MODEL NO.	140Q	SECTION	PAGE	REVISION	REMARKS	PART NO.	DESCRIPTION
BUYER'S MODEL NAME		-	1			61225	M4 PHILLIPS SCREW
FACTORY MODEL	CA32360					62215	M4 TORQUE NUT
ORIGINAL ISSUE	APRIL 2003	SERIAL NO.				66124	RUBBER FOOT
						66481	M4 STUD SCREW
						75121	PLATE
						75126	LEAF SPRING
						75218	RUBBER CUSHION
						75275	M4 STUD SCREW
						75636	EXTENSION TABLE
						76744	COVER
						76788	BED COVER
						77042	M4 PHILLIPS SCREW

BUYER'S MODEL NO.	140Q	SECTION	PAGE	REVISION	REMARKS	PART NO.	DESCRIPTION
BUYER'S MODEL NAME		-	2			10963	E6 CLIP-ON-WASHER
FACTORY MODEL	CA32360					39542	CLIP-ON-WASHER
ORIGINAL ISSUE	APRIL 2003	SERIAL NO.				40091	THRUST WASHER
						43930	SPRING PIN
						64637	THRUST WASHER
						66235	SECURING PLATE
						66437	BUSH
						66474	M5 SCREW
						67447	M5 SCREW
						72858	WASHER
						73371	M6 SCREW
						73434	M4 PHILLIPS SCREW
						74549	WASHER
						74587	M6 STUD SCREW
						75060	TAKE-UP LEVER CRANK
						75066	NEEDLE BAR CRANK
						75071	BALANCE CAM
						75072	BALL BUSHING
						75088	TAKE-UP LEVER
						75089	CRANK SHAFT
						75142	CORD GUIDE
						75182	COLLAR
						75205	FEED REGULATING CAM
						75207	CS-CLIP
						76650	MAIN SHAFT
						76654	WASHER
						76656	CONNECTING ROD
						76688	SHAFT
						76748	HAND WHEEL
						76778	BELT PULLEY
						77035	M4 PHILLIPS SCREW
77042	M4 PHILLIPS SCREW						
77070	SPIRAL GEAR						

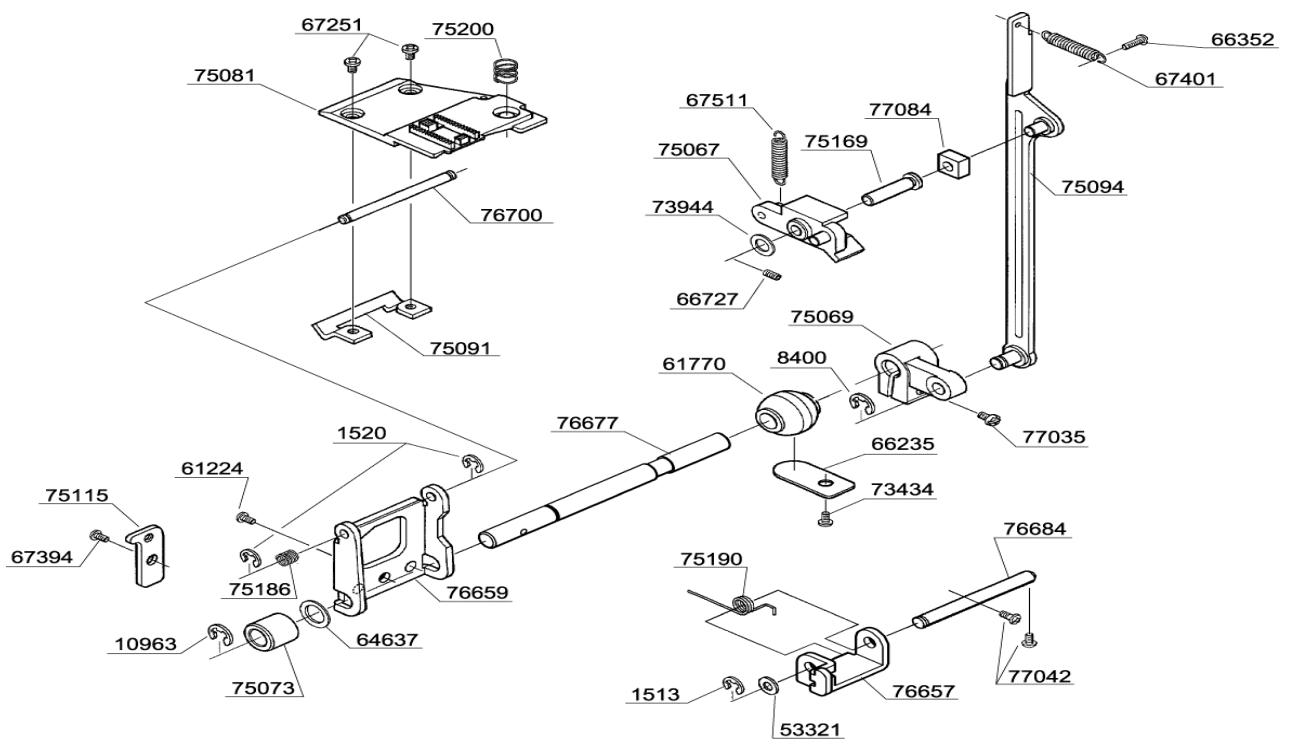
BUYER'S MODEL NO.	140Q	SECTION	PAGE	REVISION	REMARKS	PART NO.	DESCRIPTION
BUYER'S MODEL NAME		-	4			1513	E4 CLIP-ON-WASHER
FACTORY MODEL	CA32360					32316	WASHER
ORIGINAL ISSUE	APRIL 2003	SERIAL NO.				35818	WASHER
						37515	WASHER
						44267	SPRING WASHER
						44894	WASHER
						63278	PRESSER BAR
						63524	M3 BOLT
						66725	M4 SCREW
						66727	M4 SCREW
						68299	#7 SCREW FOR SHANK
						72266	STUD SCREW
						72326	WASHER
						75106	PRESSER BAR GUIDE
						75107	BRACKET A
						75108	BRACKET B
						75110	GUIDE PLATE
						75111	PRESSER BAR GUIDE BLOCK
						75161	SHAFT
						75191	COMPRESSION SPRING
						75233	LOCKER
						75235	LEAF SPRING
						75238	ECCENTRIC PIN
						75239	M4 STUD SCREW
						75359	STOPPER
						75606	PRESSER CONTROL DIAL
						77042	M4 PHILLIPS SCREW
						77043	FELT
77045	ZIGZAG PRESSER FOOT						
77068	SHANK						
77579	STRAIGHT STITCH LOCK LEVER						

BUYER'S MODEL NO.	140Q	SECTION	PAGE	REVISION	REMARKS
BUYER'S MODEL NAME		-	5		
FACTORY MODEL	CA32360				
ORIGINAL ISSUE	APRIL 2003	SERIAL NO.			

PART NO.	DESCRIPTION
8400	E5 CLIP-ON-WASHER
32316	WASHER
43390	THRUST WASHER
47910	BOBBIN CASE
61770	BALL BUSHING
64637	THRUST WASHER
66474	M5 SCREW
66725	M4 SCREW
66727	M4 SCREW
67411	SPIRAL GEAR
67412	COLLAR
67444	COLLAR
67447	M5 SCREW
73434	M4 PHILLIPS SCREW
73973	M4 BOLT
74097	SHUTTLE HOOK
75074	BUSHING
75076	FEED-DOG LIFTING CAM
75113	SECURING PLATE A
75114	SECURING PLATE B
75204	BEVEL GEAR
75241	SHUTTLE DRIVER
76281	BOBBIN
76668	LOWER SHAFT ROCKER
76681	HEADED PIN
76687	SHUTTLE RACE ASSEMBLY
76699	LOWER SHAFT

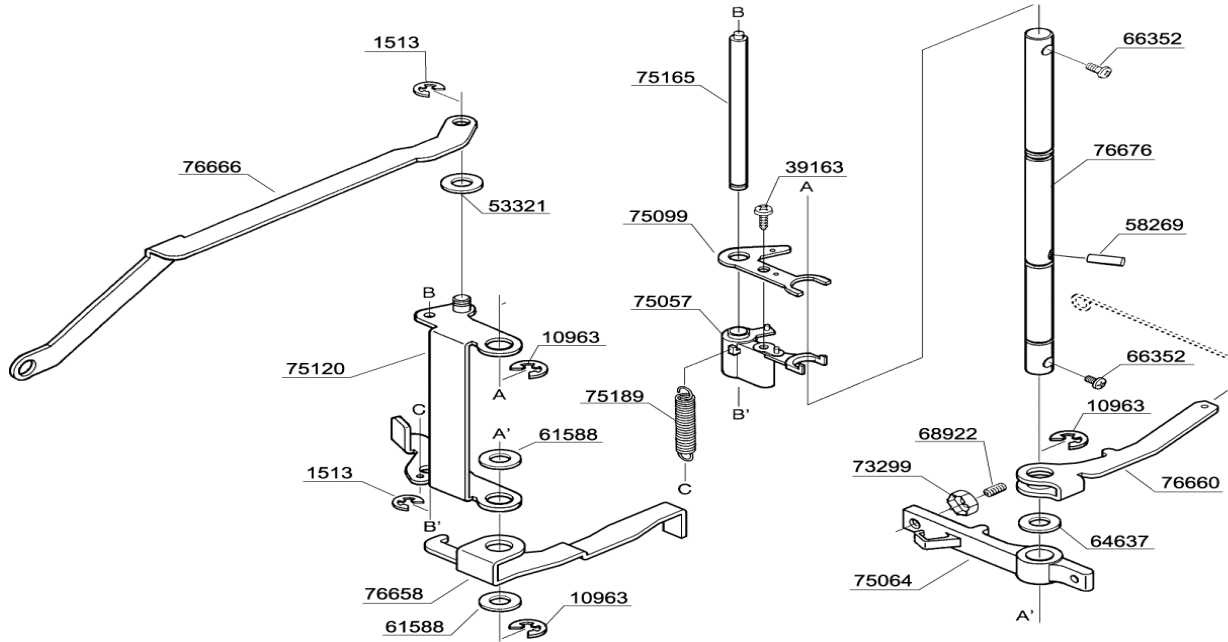


BUYER'S MODEL NO.	140Q	SECTION	PAGE	REVISION	REMARKS	PART NO.	DESCRIPTION
BUYER'S MODEL NAME		-	6			1513	E4 CLIP-ON-WASHER
FACTORY MODEL	CA32360					1520	E3 CLIP-ON-WASHER
ORIGINAL ISSUE	APRIL 2003	SERIAL NO.				8400	E5 CLIP-ON-WASHER
						10963	E6 CLIP-ON-WASHER
						53321	THRUST WASHER
						61224	M4 PHILLIPS SCREW
						61770	BALL BUSHING
						64637	THRUST WASHER
						66235	SECURING PLATE
						66352	M4 PHILLIPS SCREW
						66727	M4 SCREW
						67251	M3.5 PHILLIPS SCREW
						67394	M5 PHILLIPS SCREW
						67401	EXTENSION SPRING
						67511	EXTENSION SPRING
						73434	M4 PHILLIPS SCREW
						73944	THRUST WASHER
						75067	FEED REGULATOR
						75069	FEED REGULATING SHAFT ROCKER
						75073	BUSHING
						75081	FEED-DOG
						75091	SECURING PLATE
						75094	FEED REGULATING ROD
						75115	SECURING PLATE C
						75169	HEADED PIN
						75186	COMPRESSION SPRING
						75190	TORSION SPRING
						75200	COMPRESSION SPRING
						76657	FEED-DOG LIFTING ARM BRACKET
						76659	FEED REGULATING BRACKET
						76677	FEED REGULATING SHAFT
						76684	SHAFT
						76700	SHAFT
						77035	M4 PHILIPS SCREW
						77042	M4 PHILLIPS SCREW
						77084	SLIDE BLOCK



BUYER'S MODEL NO.	140Q	SECTION	PAGE	REVISION	REMARKS	PART NO.	DESCRIPTION
BUYER'S MODEL NAME		-	7			1513	E4 CLIP-ON-WASHER
FACTORY MODEL	CA32360					8400	E5 CLIP-ON-WASHER
ORIGINAL ISSUE	APRIL, 2003	SERIAL NO.				32316	WASHER
						39817	M4 PHILLIPS SCREW
						61221	M4 PHILLIPS SCREW
						61224	M4 PHILLIPS SCREW
						66725	M4 SCREW
						73299	M4 TORQUE NUT
						73304	M4 SCREW
						73434	M4 PHILLIPS SCREW
						75087	STRETCH STITCH CONTROL LINK ASSEMBLY
						75095	STITCH LENGTH CONTROL CAM
						75096	FEED CONTROL LINK ASSEMBLY
						75124	LEAF SPRING
						75162	M4 STUD SCREW
						75166	SHAFT
						75173	M4 STUD SCREW
						75192	TORSION SPRING
						75236	PIN
						76661	BH WIRE ROD
						76669	REVERSE STITCH ARM
						76740	STITCH LENGTH CONTROL DIAL
						76784	REVERSE STITCH LEVER
77042	M4 PHILLIPS SCREW						
77044	M3 PHILLIPS SCREW						
77457	SHAFT						
77462	CONTROL DIAL BRACKET						
77585	DIAL INDICATOR						
77586	SEAL						

BUYER'S MODEL NO.	140Q	SECTION	PAGE	REVISION	REMARKS	PART NO.	DESCRIPTION
BUYER'S MODEL NAME		-	10			1513	E4 CLIP-ON-WASHER
FACTORY MODEL	CA32360					10963	E6 CLIP-ON-WASHER
ORIGINAL ISSUE	APRIL, 2003	SERIAL NO.				39163	TAPPING SCREW



PART NO.	DESCRIPTION
1513	E4 CLIP-ON-WASHER
10963	E6 CLIP-ON-WASHER
39163	TAPPING SCREW
53321	THRUST WASHER
58269	SPRING PIN
61588	THRUST WASHER
64637	THRUST WASHER
66352	M4 PHILLIPS SCREW
68922	M4 SCREW
73299	M4 TORQUE NUT
75057	ZIGZAG GUIDE BLOCK
75064	PATTERN SELECTING CAM CLAW
75099	PATTERN CAM FOLLOWER
75120	CAM FOLLOWER GUIDE BRACKET
75165	SHAFT B
75189	EXTENSION SPRING
76658	STRETCH STITCHING CAM FOLLOWER
76660	BH CAM FOLLOWER
76666	ZIGZAG GUIDE BAR
76676	SHAFT A

BUYER'S MODEL NO.	140Q	SECTION	PAGE	REVISION	REMARKS	PART NO.	DESCRIPTION
BUYER'S MODEL NAME		-	11			2744	WASHER
FACTORY MODEL	CA32360					40110	TERMINAL BLOCK ASSEMBLY
ORIGINAL ISSUE	APRIL, 2003	SERIAL NO.				40111	TERMINAL BLOCK COVER
						41892	TERMINAL BLOCK COVER
						44498	M3 NUT
						59181	SWITCH ASSEMBLY
						61222	M4 PHILLIPS SCREW
						61224	M4 PHILLIPS SCREW
						68891	WASHER
						72901	MOTOR
						72916	LAMP CORD UNIT
						72918	VINYL TUBE
						72936	LIGHT BULB
						75061	MOTOR PULLEY
						75062	INSULATING SHEET
						75078	MOTOR PULLEY FLANGE
						75118	LAMP PLATE BRACKET
						75137	TERMINAL BLOCK BRACKET
						75197	CORD GUIDE
						75249	HARNES GUIDE
						75341	VINYL TUBE
						76703	MOTOR BELT
						76715	SWITCH BRACKET
77042	M4 PHILLIPS SCREW						
77057	M3 PHILLIPS SCREW						

BUYER'S MODEL NO.	140Q	SECTION	PAGE	REVISION	REMARKS	PART NO.	DESCRIPTION
BUYER'S MODEL NAME		-	13			9122	WASHER
FACTORY MODEL	CA32360					46293	CS-5 CLIP-ON-WASHER
ORIGINAL ISSUE	APRIL, 2003	SERIAL NO.				61224	M4 PHILLIPS SCREW
<p>The diagram shows an exploded view of a sewing machine head assembly. Key components include: <ul style="list-style-type: none"> 76395: Tapping screw for the handle. 63448: Washer for the handle. 76742: Side cover. 74795: Tapping screw for the shuttle race cover. 76440: Plastic collar for the shuttle race cover. 64360: Toothed washer for the shuttle race cover. 61224: M4 Phillips screw for the shuttle race cover. 68891: Washer for the shuttle race cover. 72791: M4 stud screw for the shuttle race cover. 72221: M4 stud screw for the side cover. 76738: Side cover. 75216: Reflection sheet for the handle. 75127: Leaf spring for the handle. 75128: Securing plate for the handle. 75178: Pin for the handle. 75178: Reflection sheet for the handle. 75216: Pin for the handle. 75236: Pin for the handle. 77581: Shuttle race cover. 63560: M4 Phillips screw for the shuttle race cover. 68443: Blade for the shuttle race cover. 77042: M4 Phillips screw for the shuttle race cover. 77476: Indicator window (1) for the shuttle race cover. 77576: Indicator window (2) for the shuttle race cover. 77581: Face cover for the shuttle race cover. 77583: Control panel for the shuttle race cover. 76743: Shuttle race cover. 46293: CS-5 clip-on-washer for the shuttle race cover. 9122: Washer for the shuttle race cover. 77583: Control panel for the shuttle race cover. </p>						72791	M4 SCREW
						74795	TAPPING SCREW
						75127	LEAF SPRING
						75128	SECURING PLATE
						75178	PIN
						75216	REFLECTION SHEET
						75236	PIN
						76395	TAPPING SCREW
						76440	PLASTIC COLLAR
						76738	SIDE COVER
						76742	HANDLE
						76743	SHUTTLE RACE COVER
						77042	M4 PHILLIPS SCREW
						77476	INDICATOR WINDOW (1)
						77576	INDICATOR WINDOW (2)
						77581	FACE COVER
						77583	CONTROL PANEL

