

PART LIST OF "MAGIC PRESS "

MP4

(120V / 220V /240V)

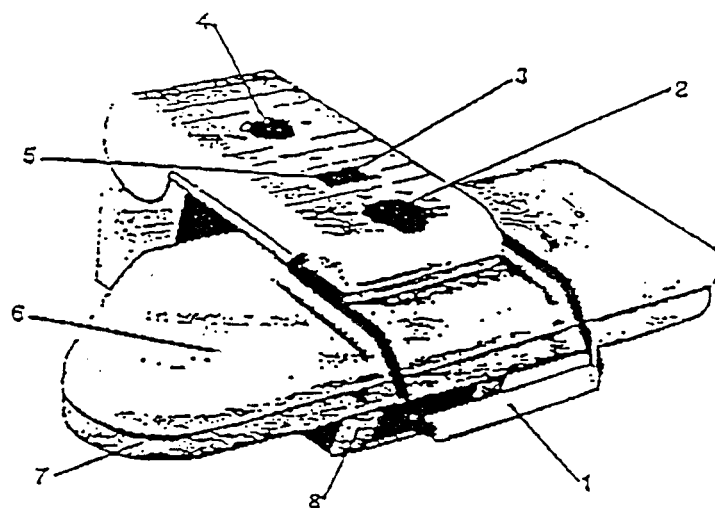


FIG 1a

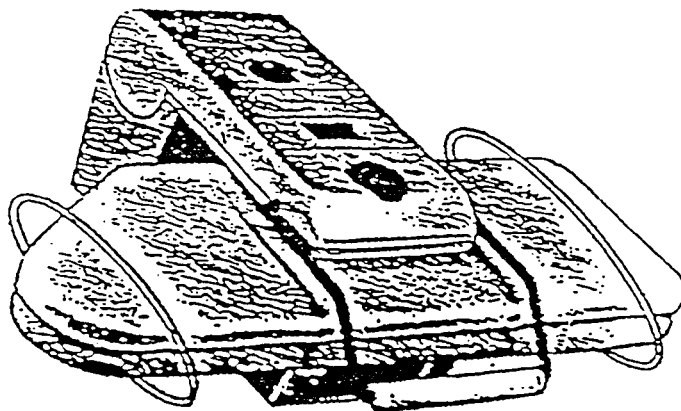


FIG 1b

PLMP4

** REFER TO FIGURE 2 **

ITEM	DESIGNATION	PART NUMBER	QTY
1	TEMPERATURE CONTROL KNOB	284,081 -000	1
2	LOCKING KNOB	284,082 -000	1
3	CONTROL LAMP (120V)	284,083 -000	1
	CONTROL LAMP (240V)	284,083 -010	1
4	SWITCH ON/OFF (120V)	284,084 -000	1
	SWITCH ON/OFF (240V)	284,084 -010	1
5	ARM COVER	284,085 -000	1
6	PUSH WASHER (BIG)	284,194 -000	1
7	PUSH WASHER (SMALL)	284,193 -000	1
8	INSERT	284,086 -000	2
9	ARM COVER CPL	284,901 -000	1 SET
10	LEAD WIRE ASSEMBLY (120V)	284,902 -000	1
	LEAD WIRE ASSEMBLY (240V)	284,902 -010	1
11	LEAD WIRE ASSEMBLY (120V)	284,903 -000	1
	LEAD WIRE ASSEMBLY (240V)	284,903 -010	1
12	LEAD WIRE ASSEMBLY (120V)	284,904 -000	1
	LEAD WIRE ASSEMBLY (240V)	284,904 -010	1
13	LEAD WIRE ASSEMBLY (120V)	284,905 -000	1
	LEAD WIRE ASSEMBLY (240V)	284,905 -010	1
14	INSULATING TUBE	284,157 -000	4

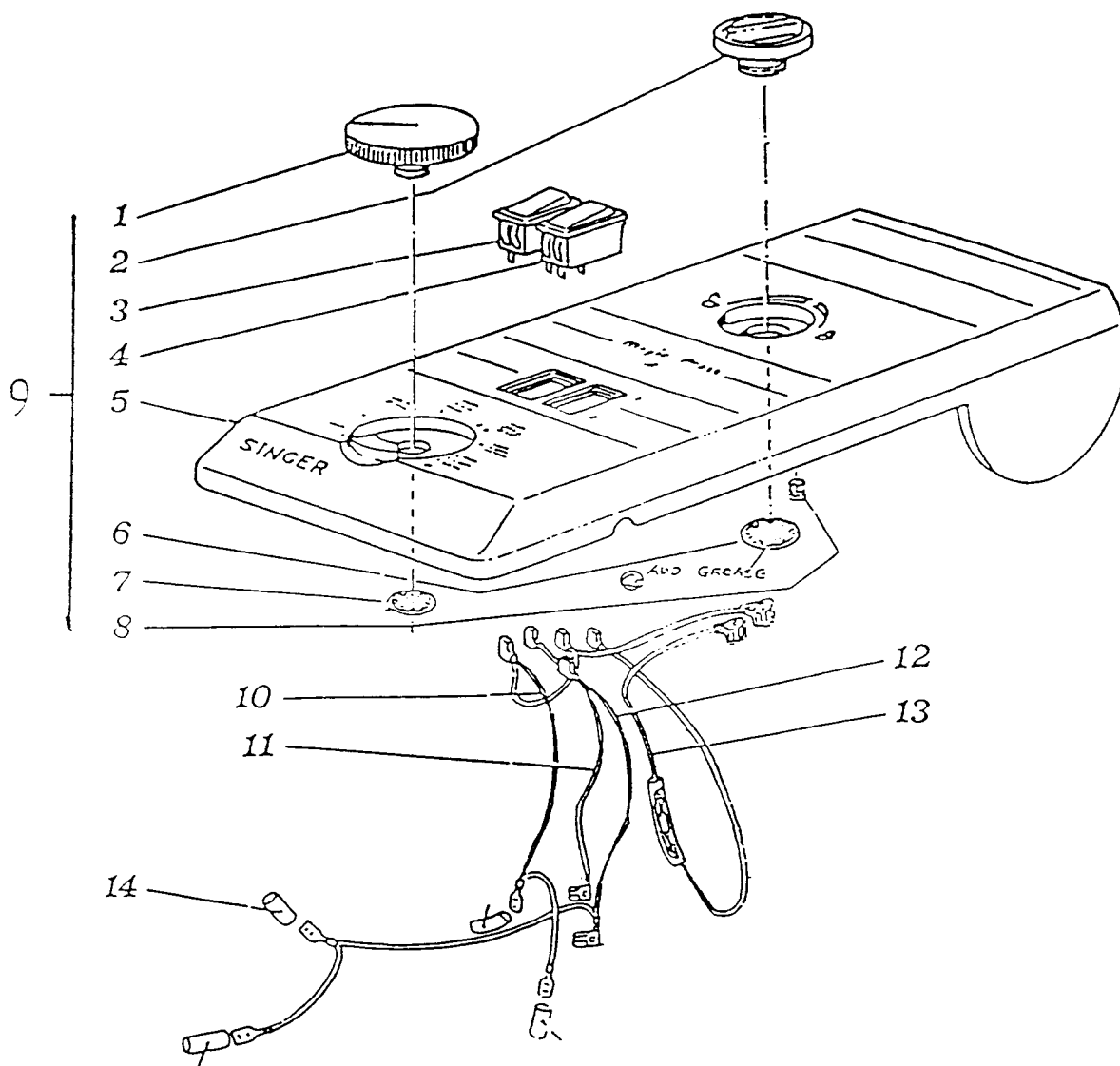


FIG 2

** REFER TO FIGURE 3 **

ITEM	DESIGNATION	PART NUMBER	QTY
1	SHAFT (LONG)	284,116 -000	1
2	WASHER	284,203 -000	2
3	FLANGE NUT	284,152 -000	2
4	SCREW	284,178 -000	1
5,20	M3 RETAINING WASHER	284,195 -000	3
6	EARTH WIRE ASSEMBLY (120V)	284,906 -000	1
	EARTH WIRE ASSEMBLY (240V)	284,906 -010	1
7	SOCKET	284,118 -000	1
8	SELF ADHESIVE BUFFER	284,117 -000	1
9	SELF ADHESIVE BUFFER	284,119 -000	2
10	RUBBER FOOT	284,228 -000	2
11	CABLE PASS	284,121 -000	2
12,21,26	SCREW	284,183 -000	3
13	M4 RETAINING WASHER	284,196 -000	1
14	STRAIN RELIEF ASSEMBLY	284,907 -000	2
15,19	SCREW	284,177 -000	4
16	BASIC SHEET	284,124 -000	1
17	RATING LABEL MP4 120V	284,159 -000	1
	RATING LABEL MP4 240V	284,159 -010	1
	RATING LABEL MP4 220V	284,159 -020	1
18	CABLE SET (FOR ITALY, SPAIN & USA)	284,908 -000	1
	CABLE SET (AUSTRALIA)	284,908 -010	1
	CABLE SET (EUROPE)	284,908 -020	1
22,25	WASHER	284,197 -000	2
23,24	CABLE CLAMPING COLLAR	284,120 -000	2
27	M8 RETAINING WASHER	284,202 -000	22
28	SCREW	284,188 -000	2
29	REAR FOOT	284,051 -000	2
30	SHAFT (SHORT)	284,111 -000	1
31	SCREW	284,179 -000	2

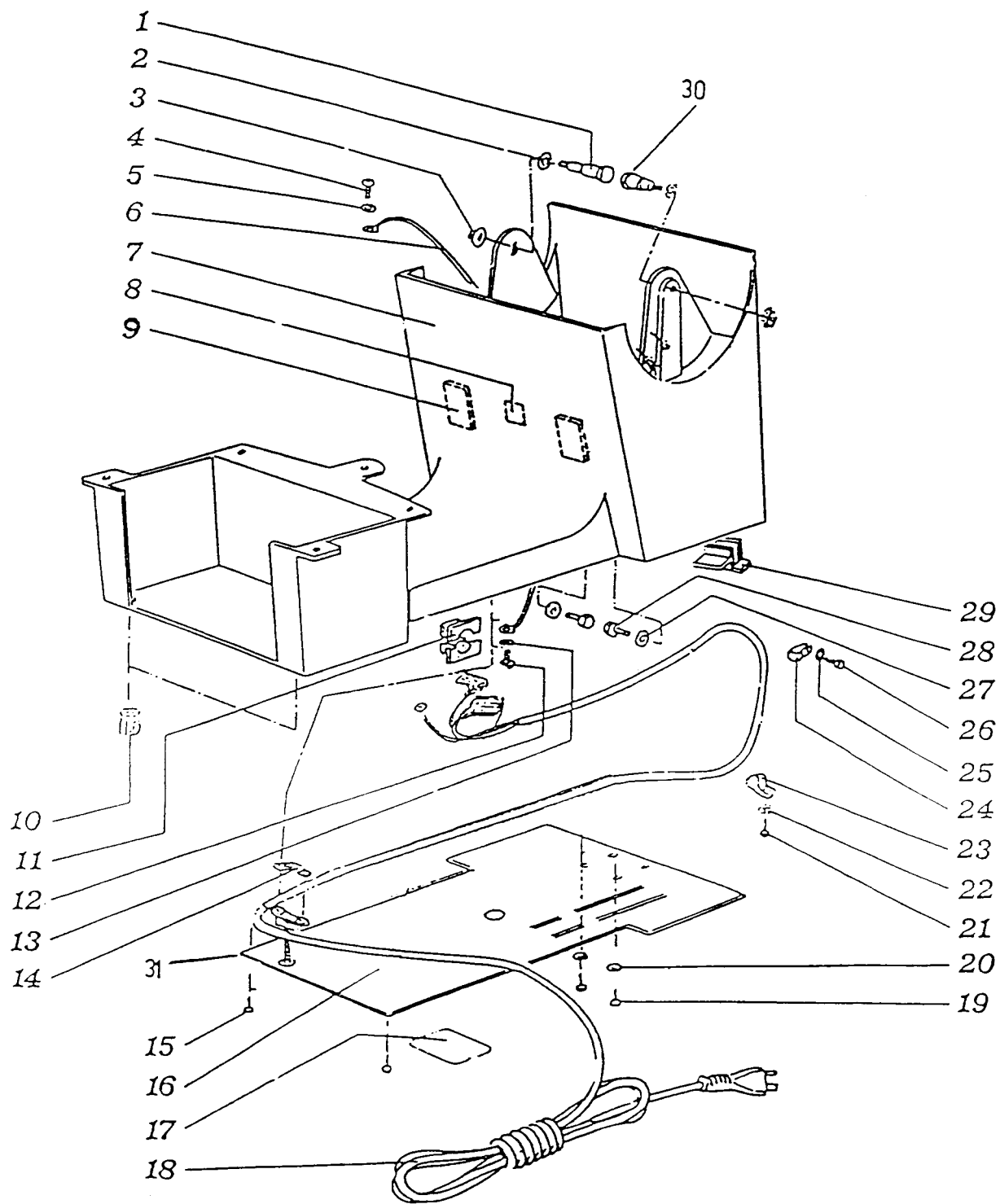


FIG 3

** REFER TO FIGURE 4 **

ITEM	DESIGNATION	PART NUMBER	QTY
1	FORK LEVER	284,104 -000	1
2	SHAFT	284,103 -000	1
3,45	HEXAGONAL NUT	284,101 -000	3
4,44	SPECIAL SCREW	284,909 -000	3
5,35	SUPPORT PRESSURE SHEET	284,100 -000	2
6,36	ANCHOR NUT	284,099 -000	2
7	SAFETY FTOP PLATE	284,098 -000	1
8,37	M8 RETAINING WASHER	284,200 -000	2
9	SCREW	284,190 -000	1
10	SCREW	284,184 -000	1
11,16,53	M4 RETAINING WASHER	284,196 -000	7
58			
12	COLLET	284,096 -000	1
13	WAVE WASHER	284,204 -000	11
14	SAFETY LEVER	284,097 -000	1
15,48,52	SCREW	284,183 -000	5
17,54	HANDLE CLAMPING PLATE	284,105 -000	2
18	M5 E-RING	284,106 -000	1
19	HANDLE	284,045 -000	1
20	HANDLE COVER	284,115 -000	2
21	PLUG	284,160 -000	1
22	SCREW	284,178 -000	1
24	M3 RETAINING WASHER	284,195 -000	1
25	SCREW	284,180 -000	1
26	PRESS ARM	284,110 -000	1
28	MICA SHIELD (RIGHT)	284,072 -000	1
29	SCREW	284,185 -000	2
30	RUBBER BUFFER	284,114 -000	1
31,41	FLANGE NUT	284,152 -000	2
32	SPRING INSERT	284,145 -000	2
33	TENSION SPRING	284,112 -000	1
34	ANCHOR BRACKET	284,113 -000	1
38	SCREW	284,189 -000	1
39	SHAFT (SHORT)	284,111 -000	2
40	WASHER	284,203 -000	2
42	SINTERED BEARING	284,143 -000	4
43	SINTERED BEARING COVER	284,144 -000	4
46	CABLE CLAMPING COLLAR	284,120 -000	1
49	PIVOT PIN (REAR)	284,109 -000	1
50	CLOSING LEVER BUSHING	284,148 -000	1
51	CLOSING LEVER	284,147 -000	1
55	PRESS CLOSING CONNECTING ROD	284,107 -000	1
56	PIVOT PIN (FRONT)	284,108 -000	1
57	SCREW	284,181 -000	2
59	WASHER	284,169 -000	2
60	AUTO SHUT OFF (120V)	284,910 -000	1
	AUTO SHUT OFF (240V)	284,910 -010	1
61	E-RING	284,046 -000	1
62	WASHER	284,197 -000	1

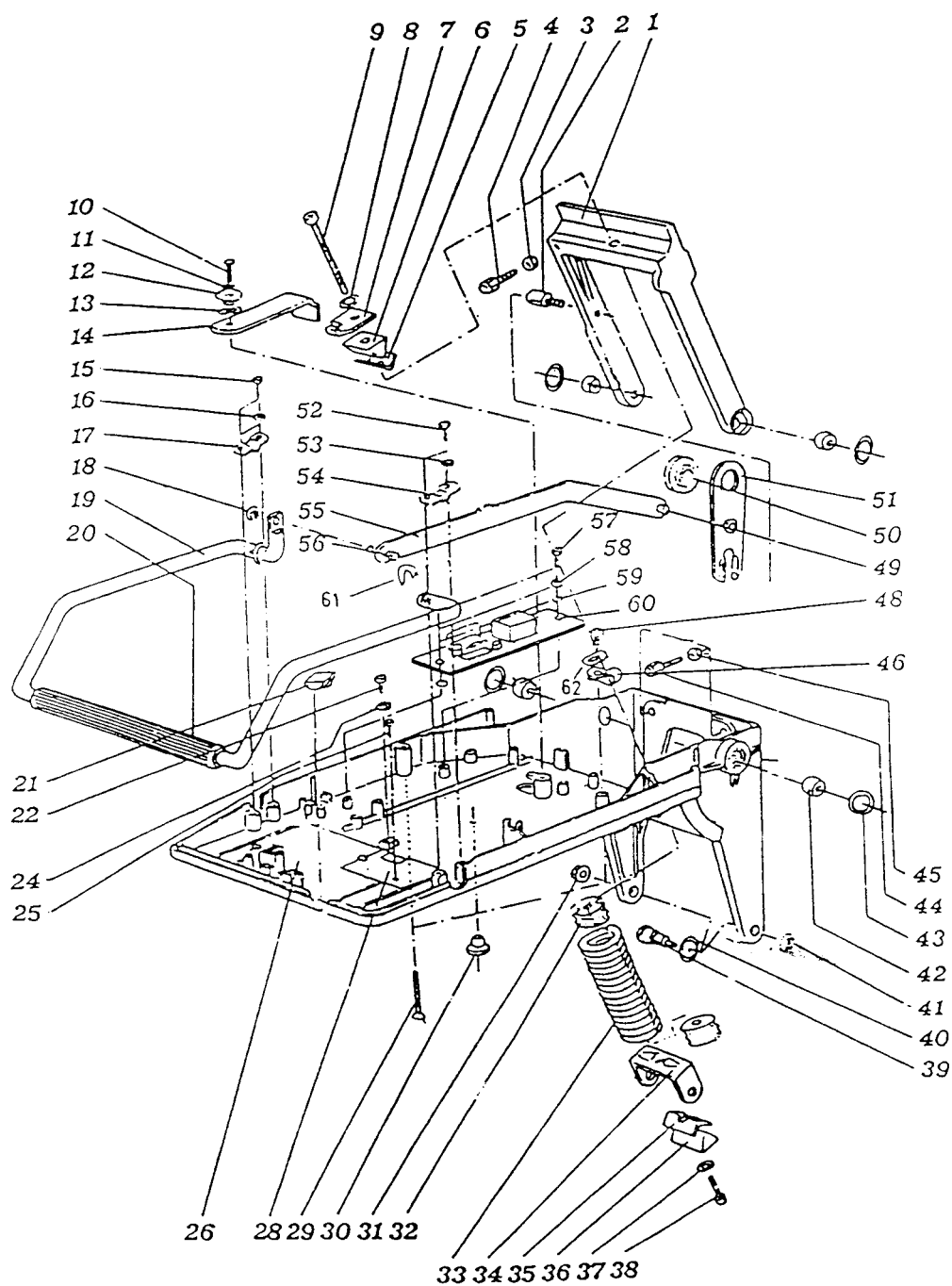


FIG 4

**** REFER TO FIGURE 5 ****

ITEM	DESIGNATION	PART NUMBER	QTY
1	FIXING SHAFT	284,126 -000	2
2	SECURITY SPRING	284,125 -000	2
3	IRONING PLATE COVER	284,057 -000	1
4	REFLECTOR	284,146 -000	1
5,35	COVER CLAMPING PLATE	284,127 -000	4
6,34	PLATE ARM LOCK	284,128 -000	4
7,15	M4 RETAINING WASHER	284,196 -000	2
8	BRACKET	284,167 -000	1
9,16,30	M6 NUT	284,131 -000	11
10,29	M6 FLANGE NUT	284,154 -000	4
11,26	WASHER	284,130 -000	4
12,28	FIXING BRACKET	284,132 -000	2
13,32	M4 NUT	284,136 -000	2
14	EARTH ASSEMBLY (120V)	284,911 -000	1 SET
	EARTH ASSEMBLY (240V)	284,911 -010	1 SET
17	HEATING ELEMENT CLAMP	284,002 -000	7
18	HEATER SPACER	284,003 -000	14
19	WELD STUD	284,004 -000	11
20	SOLEPLATE	284,129 -000	1
21	LUG	284,165 -000	4
22	HEATER (LONG)	284,173 -000	1
24	M4 STUD SCREW	284,133 -000	2
25	ALUMINIUM WASHER	284,199 -000	1
27	THERMOSTAT (120V)	284,175 -000	1
	THERMOSTAT (240V)	284,175 -010	1
31	FLEXIBLE TREE	284,135 -000	1
33	THERMOSTAT HEAD	284,134 -000	1
36	HEATER (SHORT)	284,174 -000	1

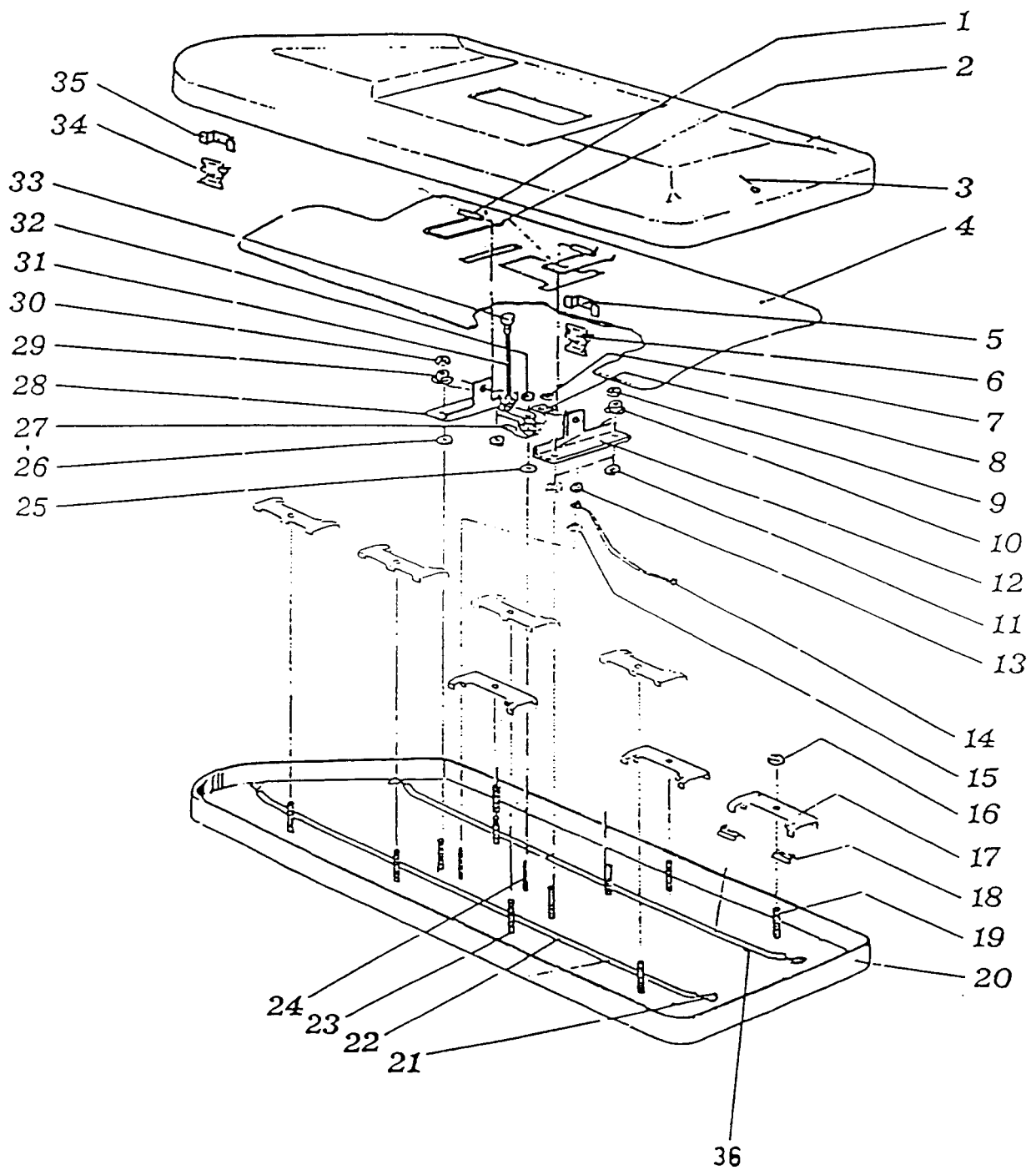


FIG 5

**** REFER TO FIGURE 6 ****

<i>ITEM</i>	<i>DESIGNATION</i>	<i>PART NUMBER</i>	<i>QTY</i>
1	FORMED IRONING CLOTH	284,137 -000	1
2	FROMED IRONING BACK-UP	284,138 -000	1
3	STUFFING FOR IDEM	284,139 -000	1
4	ALU-FOIL	284,140 -000	1
5	PLATE STANDARD	284,141 -000	1
6	IRONING BOARD ASSEMBLY	284,912 -000	1 SET
7	SCREW	284,186 -000	4
8	SMOOTHING PILLOW	284,142 -000	1
9	SPRAYER	284,913 -000	1
10	INSTRUCTION BOOK (ENGLISH/FRENCH/SPANISH)	284,222 -000	1
	INSTRUCTION. BOOK (DUTCH/GERMANY/FRENCH)	284,222 -010	1
	INSTRUCTION BOOK (DANISH/SWEDISH/FRENCH)	284,222 -020	1
	INSTRUCTION BOOK (ENGLISH/TURKISH)	284,222 -030	1
11	SPRAYER HEAD	284,155 -000	1
12	SPRAYER BOTTOM	284,156 -000	1
13	DESICCATOR BAG	284,221 -000	1

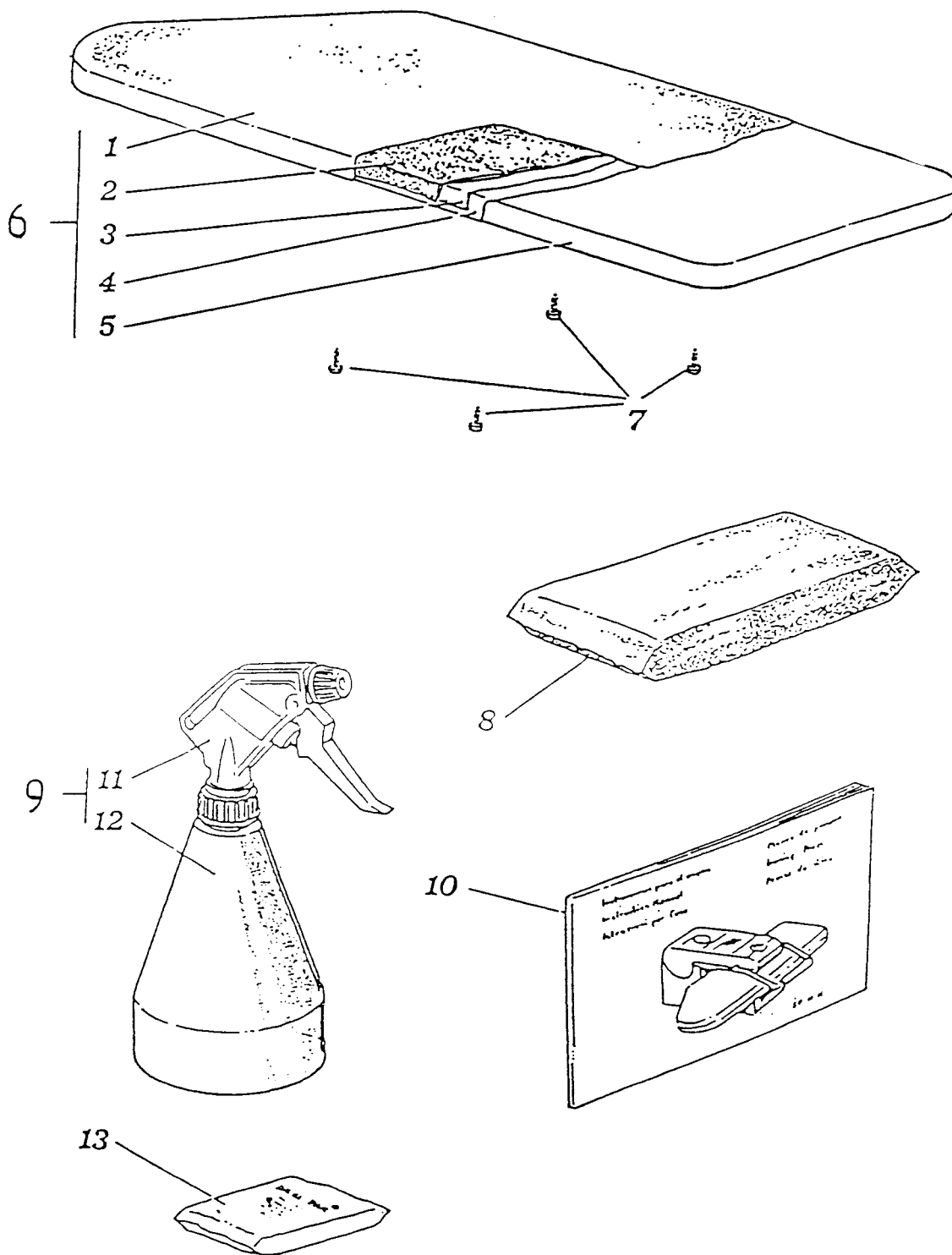
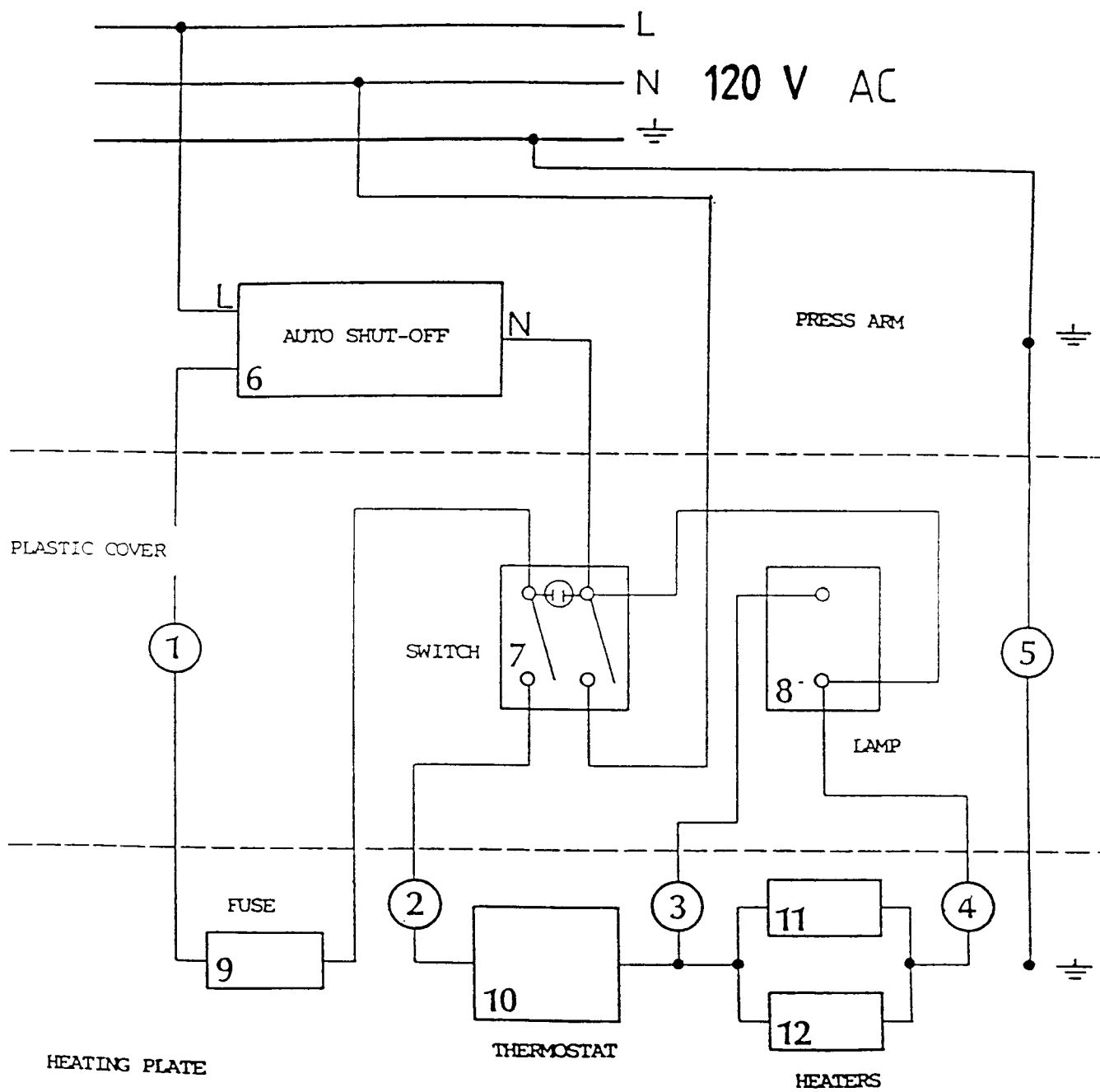


FIG 6

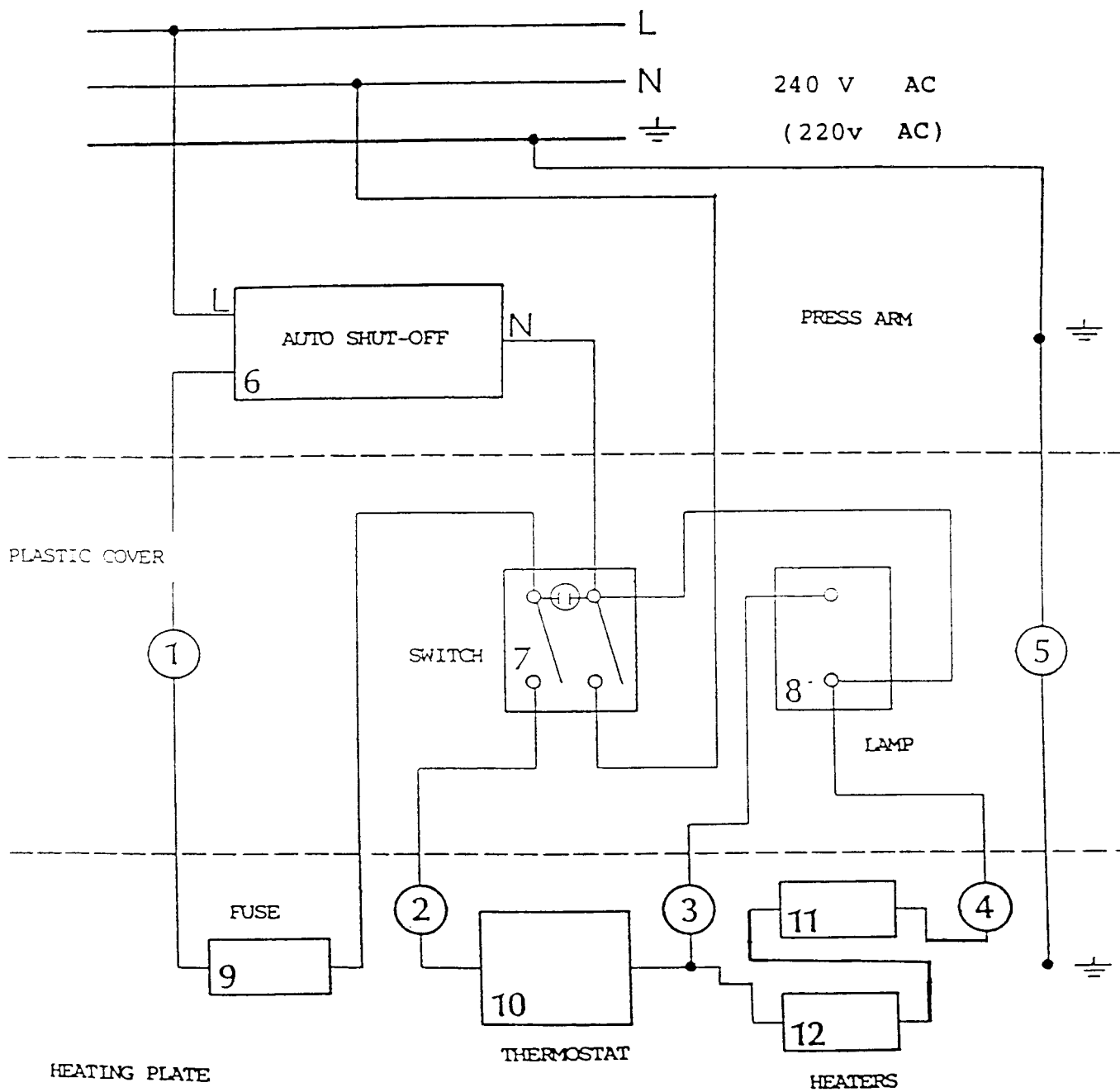
**** REFER TO FIGURE 7 ****

ITEM	DESIGNATION	PART NUMBER	QTY
1	CONNECTING CABLE (120V)	284,905 -000	1
	CONNECTING CABLE (240V)	284,905 -010	1
2	CONNECTING CABLE (120V)	284,903 -000	1
	CONNECTING CABLE (240V)	284,903 -010	1
3	CONNECTING CABLE (120V)	284,904 -000	1
	CONNECTING CABLE (240V)	284,904 -010	1
4	CONNECTING CABLE (120V)	284,902 -000	1
	CONNECTING CABLE (240V)	284,902 -010	1
5	CONNECTING CABLE (120V)	284,911 -000	1
	CONNECTING CABLE (240V)	284,911 -010	1
6	AUTO SHUT-OFF (120V)	284,910 -000	1
	AUTO SHUT-OFF (240V)	284,910 -010	1
7	SWITCH (120V) — on/off	284,084 -000	1
	SWITCH (240V)	284,084 -010	1
8	LAMP (120V)	284,083 -000	1
	LAMP (240V)	284,083 -010	1
9	FUSE (120V)	284,905 -000	1
	FUSE (240V)	284,905 -010	1
10	THERMOSTAT (120V)	284,914 -000	1
	THERMOSTAT (240V)	284,914 -010	1
11	HEATER (SHORT)	284,174 -000	1
12	HEATER (LONG)	284,173 -000	1



ELECTRICAL DIAGRAM -- DRY PRESS MP4

FIG 7

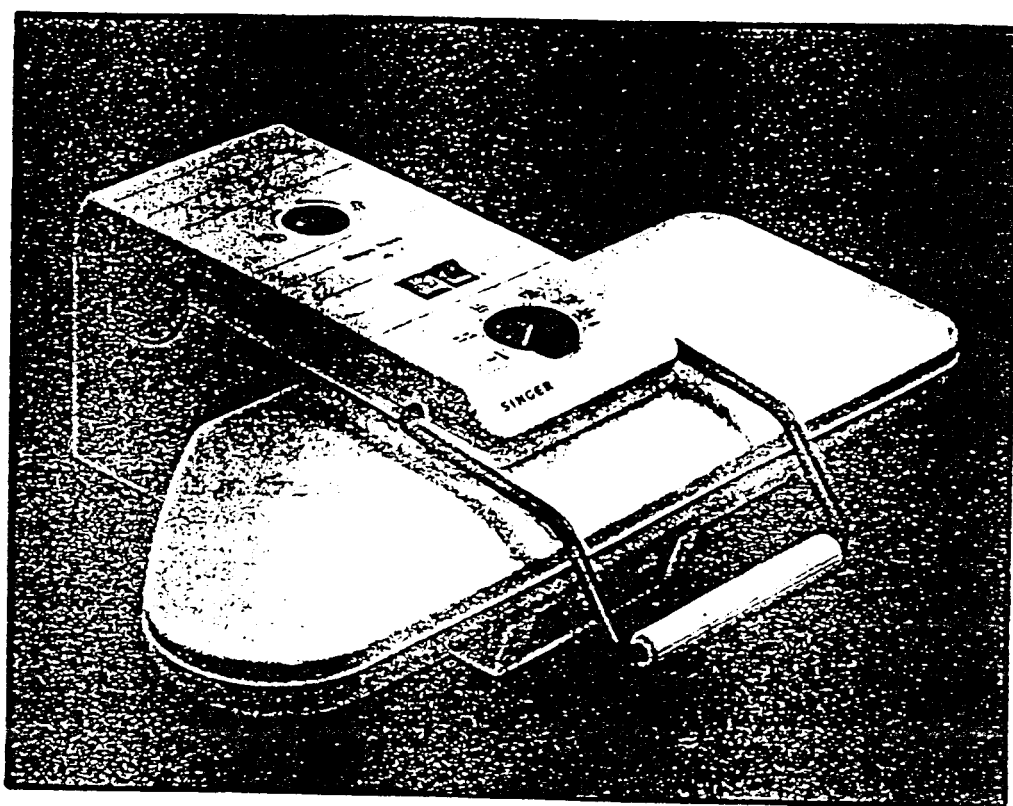


ELECTRICAL DIAGRAM -- DRY PRESS MP4

SERVICE MANUAL

MAGIC PRESS™ 4

MODEL MP4



*A trademark of the Singer Company

REVISION 1

DEC. 18, 90

* * CONTENT * *

- 1 GETTING TO KNOW YOUR MACHINE - PRINCIPAL PARTS
- 2 PRELIMINARY STEPS
- 3 HOW TO REMOVE THE UPPER COVER
- 4 HOW TO CHANGE THE KNOB & SWITCH
- 5 HOW TO CHANGE THE ELECTRICAL CABLE
- 6 HOW TO REMOVE THE SOLEPLATE ASSEMBLY
- 7 HOW TO CHANGE THE THERMOSTAT UNIT
- 8 HOW TO CHANGE A HEATING ELEMENT
- 9 HOW TO ADJUST THE PRESS OPENING
- 10 TROUBLE-SHOOTING THE ELECTRICAL CIRCUIT

This manual must be used in conjunction with the part list for ironing press MP4

This manual is designed for use by trained and qualified service persons.

The Singer Company will not be responsible for any parts requiring replacement owing to natural wear, abuse or negligence of the user or in the event the machine is serviced by other than a trained and qualified service person, or if parts are substituted which do not meet applicable specifications.

1 GETTING TO KNOW YOUR MACHINE - PRINCIPAL PARTS

(Fig 1a)

- 1.1 PRESSING HANDLE. Use for raising and lowering the pressing plate.
- 1.2 TEMPERATURE CONTROL SYSTEM. Adjustable 60 - 200°C.
- 1.3 ON/OFF SWITCH. Main switch with red signal lamp.
- 1.4 LOCKING KNOB. Keeps the press closed when moving.
- 1.5 WARM-UP INDICATOR. The orange light remains lit until the press increases to the selected temperature.
- 1.6 PRESSING PLATE. Movable temperature controlled surface for heating and pressing fabric.
- 1.7 IRONING BOARD. Chamfered board with felt and cotton covering plus aluminium vapour trap.
- 1.8 BASE. Stable, skid and tilt resistant due to wide base and rubber feet.

2 PRELIMINARY STEPS (FIG 1b)

- 2.1 Position the press over a table and strong plane, e.g. a table or a piece of furniture specially designed.
- 2.2 Unplug cord from the electrical socket.
- 2.3 Before handling the cover, be sure the safety knob is in closed position corresponding to symbol "shut-down lock".
- 2.4 Put a loop of rope at each end of plate and pressing board to prevent accidental opening of the press.

3 HOW TO REMOVE THE UPPER COVER (Fig 2)

- 3.1 To remove the upper cover, it is necessary to unscrew and remove the two screws (Item 29, Fig 4) located under the press arm; then lift the lever cover at the same time with both hands on the upper section and on the high sides of the cover.
- 3.2 Holding up the cover, detach the connection terminals from the switch and lamp and the cover is completely freed.

4 HOW TO CHANGE THE KNOB & SWITCH (Fig 2)

- 4.1 To change on/off switch (Item 4) or control lamp (Item 5) press from outside their tabs and push them from bottom to remove.
- 4.2 After removing the push washers (Item 6 & 7); the temperature control knob (Item 1) and the locking knob (Item 2) can be removed from holes where they are retained respectively.

5 HOW TO CHANGE THE ELECTRICAL CABLE (Fig 3)

- 5.1 If the cable with plug is defective , it is necessary to change the power cord.
- 5.2 Put the press in vertical position, loosen the four screws (Item 15 & 19) and remove the base plate (Item 16).
- 5.3 Free the power cable from the section between the two strain-relief assemblies (Item 14), the earth connection and the other end by loosening corresponding screws and disconnecting electrical connections.

9 HOW TO ADJUST THE PRESS OPENING (Fig 3)

- 9.1 If the opening of press, after some time of operation, requires excessive pressure to close; that means that the fulcrum point position of the pressure spring is out of calibration. The procedure for adjustment is indicated below.
- 9.2 Tie the ironing board and the soleplate with two rope loops, located at both ends to avoid accidental opening of the press.
- 9.3 Put the press in vertical position and disassemble the basic sheet as described in 5.2.
- 9.4 Loosen both hexagonal screws (Item 28) without removing them.
- 9.5 Place the press in horizontal position.
- 9.6 Move the handle up and down until fulcrum is free.
- 9.7 Move the handle to a central position till the point of stable equilibrium is attained.
- 9.8 Put press in vertical position and screw-in both screws evenly.
- 9.9 At this point the handle could be moved in both directions with even pressure.